



**DECORATIVE
HARDWOODS**
Association™

2023

WHERE TO BUY

HARDWOOD PLYWOOD, VENEER, & ENGINEERED HARDWOOD FLOORING

Decorative Hardwoods Association
Membership Directory
www.decorativehardwoods.org

Formerly the Hardwood Plywood & Veneer Association®



Right product. Right size. Right location. Right company.

PENROD currently stocks a large variety of core veneer products at multiple port locations in North America. In fact, PENROD goes to places in the world other companies don't go to for the materials that fulfill the needs of manufacturers.

PENROD OFFERS:

Core Veneer
Various Types of Platforms
Rotary and Sliced Faces

PENROD SOURCES PRODUCTS FROM:

North America • South America
Asia • Russia • Africa • And beyond

FIND WHAT YOU NEED WITH PENROD.

Corporate Headquarters: Virginia Beach
PH (757) 498-0186 • FX (757) 498-1075
thePENRODcompany.com



Not just another pretty sliced veneer face.

YOU'VE FOUND YOUR BEST SOURCE FOR SLICED VENEER FACES.

With a great selection of both sliced veneer and lumber from which to choose, St-Raymond Veneers has a tremendous inventory of domestic species—from cherry, maple and red oak to hickory, cedar and walnut—as well as more exotic species such as khaya and sapele, so you can enjoy the quality and convenience of immediate shipment on many products.

SEE WHAT WE CAN DO FOR YOU.

PH (418) 337-4607
FX (418) 337-8342

SRVinc.com



CUSTOM PANELS BUILT TO YOUR SPECIFICATIONS



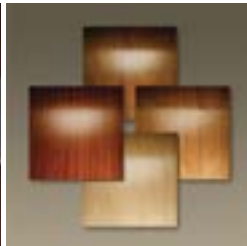
The Inventors of
ApplePly®



**Pick Your
Substrate**



**Select Your
Veneer**



**Choose Your
Finish**



**Specify
Machining**



States Industries invented ApplePly® and we do a whole lot more, too. With our unique capabilities in panel manufacturing, you can specify every detail of your custom hardwood plywood to create the perfect panel for your next project. Additional options include NOVA flat line finishing and component manufacturing.

Specified by you. Built for you.

Choose SkyPly® for Cabinetry, Casework, Wall Panels, or Furniture



MAKING LIVES BETTER
FROM THE GROUND UP.

- Hand-selected hardwood veneers
- Offered in a range of species, veneer cuts, and matches
- Available on the most highly specified core options in North America such as Arreis®, Medex®, Medite®
- SkyPly panels are available with RediFinish - a UV coat that protects from surface scratches

Available with these standards and certifications:

- UL GREENGUARD certified
- CARB ULEF Exempt
- LEED® v4 credit support
- FSC® certified option FSC-C017580
- Sustainable Forestry Initiative® (SFI) program – certified available

Learn more at roseburg.com.



FORMERLY HPVA LABORATORIES®

EXPERTS IN TESTING & CERTIFICATION SINCE 1954



Since 1954, Decorative Hardwoods Association members have consistently chosen Capital Testing as their preferred provider of certification and testing. Capital Testing is proud to certify these DHA members for 2022:

CARB 93120 ATCM / EPA TSCA Title VI Formaldehyde Emissions

- AHF Products
- Birchland Plywood
- Cahaba Veneer
- Chesterfield Wood Products
- Columbia Forest Products
- Commonwealth Plywood
- Darlington Veneer Co.
- Eastern Panel Manufacturing
- From The Forest
- GL Veneer Co.
- Goodman Veneer & Lumber Co.
- Great Lakes Veneer
- Howell Hardwood Flooring
- Techniply of Michigan
- Mohawk Industries
- Mullican Flooring
- Murphy Plywood
- Rockshield Engineered Wood Products
- States Industries
- The Wood Gallery
- Timber Products (Corinth, MS)
- Wisconsin Veneer & Plywood

ANSI/HPVA HP-1 Decorative & Hardwood Plywood

- Murphy Plywood
- States Industries

ANSI/HPVA EF 2020 Engineered Wood Flooring

- AHF Products (Only, TN)

ASTM E84 Flame Spread

- Murphy Plywood
- States Industries

ANS LTDD: Legal Timber Due Diligence

- Danzer North America
- Veneer Technologies Inc.
- Atlantic Veneer Company, LLC

Sample Certifications



and more!

To find out more about our expert testing & certification services, contact us:

Capital Testing SM
(formerly HPVA Laboratories®)



(571) 300-7050



experts@capitaltesting.org



www.capitaltesting.org

Distinctive. Reliable. Classic.

Timber Products hardwood plywood and decorative veneers will elevate your client's space to the next level in design. Find out how by contacting a sales rep or visiting timberproducts.com.

Timber Products



1-800-547-9520 | timberproducts.com



INTRODUCTION



The Decorative Hardwoods Association began its second century in 2022. This directory of our members describes our diverse membership of North American hardwood plywood, engineered wood flooring, and hardwood veneer manufacturers and suppliers.

Warm Natural Beauty | Sustainably Sourced | Safe | Legal

This 2023 edition of *Where to Buy* showcases all our members, their products, their locations, and their contacts. This award-winning directory makes it easy to specify and purchase American-made products, certified to American standards. These American engineered hardwood products are the natural beautiful choice that you can trust.

Our 15,000-square-foot state-of-the-art testing facility and association office is located in Sterling, VA, next to Dulles International Airport. Capital Testing and Certification Services, which offers technical services to our members and non-members, continues to be the recognized expert in engineered hardwood products and other building and consumer products. Our website continues to set new records for the number of visitors each year. The biweekly *eNews* reaches over 12,000 readers with diverse, pertinent news tailored for our industry and its customers. DHA sponsors three national consensus standards: hardwood plywood (ANSI/HPVA HP-1-2020), engineered wood flooring (ANSI/HPVA EF 2020), and a due diligence management system for sourcing legal timber (ANSI LTDD 1.0 2015).

Kelly Robertson

Kelly Robertson
Roseburg Forest Products
2022–2023 DHA
Chairman of the Board

DECORATIVE HARDWOODS ASSOCIATION

42777 Trade West Drive
Sterling, VA 20166
Phone: (703) 435-2900
Fax: (703) 435-2537
E-mail: resources@decorativehardwoods.org
www.decorativehardwoods.org

DHA PROFESSIONAL STAFF

Keith Christman, President
Eva Mentel, Office Manager

CAPITAL TESTING PROFESSIONAL STAFF

Josh Hosen, MS, Director of Certification Programs
Chris Palumbo, Senior Manager of Testing—Engineer
Chris Kaiser, Lab Tech II, Fire Testing—Engineer
James Fishenden, Lab Tech I, Emissions Testing
Patrick Dwyer, Lab Tech I, Physical Testing—Engineer
Victoria Gastrock, Lab Tech I, Fire Testing—Engineer

DHA is a member of the following organizations:

American Forest & Paper Association

American Wood Council

American Hardwood Export Council

American Society of Testing & Materials

ANSI

Forest Resources Association

Hardwood Forestry Fund

Hardwood Federation

International Code Council

National Fire Protection Association



Birchland Plywood-Veneer Limited

Custom Hardwood Plywood is our Specialty

- » 4th Generation Business with 80 Years of Knowledge & Experience
- » In House Veneer Mill with Custom Capabilities
- » Rotary Cut, Quarter Cut, Rift Cut & Plain Sliced
- » Over 100 Natural & Engineered Veneers
- » Special Sizes Available Up to 5' x 12'
- » Thickness Ranging from 1/8" to 2"
- » Short Turnaround Time
- » Sanded Cross Grain Panels
- » Wire Brushing & Texturing Capabilities
- » Melamine & High Pressure Laminates
- » Vast Inventory of Veneer & Core
- » Live Log Online Inventory for Selection of Specific Veneer Logs

Birchland Plywood-Veneer Limited

PO Box 430, Highway 17
Thessalon ON POR 1LO
www.birchlandplywood.com

Call Us at 1-800-461-2226

TEL 705-842-2430
FAX 705-842-2496
sales@birchlandplywood.com



TABLE OF CONTENTS

Color Key to Sections

Hardwood Plywood - Cut/Made-To-Size	13-17
Engineered Hardwood Flooring Manufacturers	19-22
Hardwood Plywood - Prefinished	23-28
Hardwood Plywood - Stock Panels	29-38
Veneer - Rotary	39-44
Veneer - Sliced	47-53
Veneer - Spliced	55-60
Distributors of Hardwood Plywood	61-64
Supplier Manufacturers and Distributors	65-77
Associate Members	78
Adhesive Manufacturers	79-82

Introduction to the Decorative Hardwoods Association	5
DHA Member Listing, Membership Category, Advertising Page	8-9
DHA Member Listing by Major Product Category	10-11
Association Profile	45
Environmental Certification Codes and Wood Species List	12
Facts About Decorative Hardwood Veneers	18
DHA 2023 Conference	45
DHA Resources & Bookstore	54

DHA Member Company, *Membership Category* (Advertising Page)

A special thanks to the advertising member companies listed in blue.

AHF Products, <i>Flooring</i>	20
Altamont Company, <i>Associate Member</i>	78
Altec, <i>Precision Machinery & Controls</i>	66
Anderson Hardwood Floors, Inc., <i>Flooring</i>	20
Arclin, <i>Supplier</i>	66
Armstrong World Industries – Ceiling Division, <i>Associate Member</i>	78
Atlantic Veneer Corp., <i>Rotary, Slicer</i>	40, 48
Bamboo Ecologic Corp., <i>Associate Member</i>	78
Besse Forest Products Group, <i>Cut-To-Size, Rotary, Slicer, Splicer</i> (See our ad on page 46)	17, 40, 42, 44, 53, 59
Birchland Plywood-Veneer Ltd., <i>Slicer, Splicer</i> (See our ad on page 6)	48, 56
Birchwood Manufacturing Co., <i>Rotary</i> (See our ad on page 46)	40
Cahaba Veneer & Plywood, Inc., <i>Cut-To-Size, Stock Panel, Rotary, Slicer</i>	14, 30, 40, 48
Cargill Bioindustrial, <i>Supplier</i>	66
Chesterfield Wood Products Inc., <i>Stock Panel</i>	30
Clarke Veneers and Plywood, <i>Rotary, Splicer</i>	40, 56
Columbia Forest Products, <i>Prefinished, Stock Panel, Rotary, Slicer</i> (See our ad on page 41)	14,24,25,26,30,31,32,33,41,49
Commonwealth Plywood, <i>Stock Panel, Rotary</i>	34, 42
Danzer Specialty Veneer (DSV), <i>Slicer</i> (See our ad, inside back cover)	49
Danzer Veneer Americas - East and West, <i>Slicer</i> (See our ad, inside back cover)	50
Danzer Canada Inc., <i>Splicer</i> (See our ad, inside back cover)	56
Darlington Veneer Co., Inc., <i>Stock Panel</i>	34
Eastern Panel Manufacturing Inc., <i>Cut-To-Size</i>	14
Eldcan Forest Products Ltd., <i>Slicer, Splicer</i>	51, 57
Fessenden Hall, Inc., <i>Distributor</i>	62
Fisher + Rückle Service, Inc., <i>Machinery Manufacturer</i>	67
Forcey Lumber & Veneer Co., <i>Slicer</i>	51
Franklin Adhesives & Polymers, <i>Adhesives & Polymers Manufacturer</i>	67, 79
The Freeman Corp., <i>Rotary, Slicer</i>	42, 51
From the Forest, <i>Flooring</i>	20
GL Veneer Co., Inc., <i>Cut-To-Size, Stock Panel</i>	15, 34
Goodman Veneer and Lumber Co., <i>Rotary</i> (See our ad on page 46)	42
Great Lakes Veneer, <i>Rotary, Slicer, Splicer</i>	43, 52, 57
Grenzebach Corp., <i>Machinery Manufacturer</i>	68
Heinrich Kuper GmbH, <i>Machinery Manufacturer</i>	68
Hexion Inc., <i>Adhesives and Resins Manufacturer</i> (See our ad on page 80)	69, 81
Howell Hardwood Flooring, <i>Flooring</i>	20
Howell Plywood Corporation, <i>Cut-To-Size</i>	15
Husky Plywood, <i>Stock Panel</i>	35
J.M. Longyear, LLC, <i>Supplier</i>	69
Kimball International, Inc., <i>Associate Member</i>	78
Kinetic Company, Inc., <i>Supplier</i>	69
Kop-Coat Protection Products, <i>Supplier</i>	69
Laminate Technologies Inc., <i>Cut-To-Size, Stock Panel</i>	15, 35
Les Boises La Fleur Inc., <i>Slicer, Splicer</i> (See our ad on page 58)	52, 58
Lignum Veneer, <i>Splicer</i>	59
Lignin Holdings, <i>Stock Panel</i>	35

DHA Member Company, Membership Category (Advertising Page)

A special thanks to the advertising member companies listed in blue.

Manthei Wood Products, <i>Stock Panel, Rotary, Splicer</i>	35, 43, 59
Marwood, <i>Slicer</i>	53
McCathay Timber, Inc., <i>HWPW/Veneer Sales Agent</i>	43, 52
Meinan Machinery Works, Inc., <i>Machinery Manufacturer</i>	70
Mercier Wood Flooring, <i>Flooring</i>	20
Merritt Machinery, LLC, <i>Machinery Manufacturer</i>	70
Moehring-Group, <i>Rotary, Slicer, Splicer</i>	40, 48, 60
Mohawk Industries, <i>Flooring</i>	21
Mullican Flooring, <i>Flooring</i>	21
Murphy Company, <i>Cut-To-Size, Prefinished, Stock Panel</i> (See our ad, back cover)	16, 26, 36
North Carolina State University, <i>Associate Member</i>	78
Northern Michigan Veneers, Inc., <i>Rotary, Slicer, Splicer</i> (See our ad on page 46)	44, 53, 59
Numatic Finishing Corp., <i>Wood Prefinishing</i>	70
Nydree Flooring LLC, <i>Flooring</i>	21
The Penrod Company/St-Raymond Veneers Inc., <i>Rotary, Slicer, Splicer</i> (See our ad, inside front cover)	44, 53, 59
Pittsburg Forest Products Co., <i>Distributor</i>	62
Premiere Finishing & Coating, <i>Supplier</i>	71
Raute Corp., <i>Machinery Manufacturer</i>	71
Robert Weed Corp., <i>Distributor</i>	63
Rocket Industrial, <i>Supplier</i>	71
Rockshield Engineered Wood Products ULC, <i>Stock Panel</i>	36
Roddis Lumber & Veneer Co. LP., <i>Distributor</i>	63
Roo Glue, Inc., <i>Adhesives Manufacturer</i>	72, 79
Roseburg Forest Products Co., <i>Prefinished, Stock Panel</i> (See our ad on page 2)	27, 36
Russell Plywood Inc., <i>Distributor</i>	64
S.J. Morse Company, <i>Cut-To-Size</i>	16
Shaw Hard Surfaces, <i>Flooring</i>	22
Sherwin-Williams, <i>Supplier</i>	72
Siemer Milling Company, <i>Additives & Extenders Manufacturer</i> (See our ad on page 73)	73
SLR International Corp., <i>Environmental Consulting</i>	74
SparTek Industries, <i>Associate Member</i>	78
Specialty Organics, Inc., <i>Adhesives Manufacturer</i> (See our ad on page 75)	75, 79
States Industries LLC, <i>Cut-To-Size, Prefinished, Stock Panel</i> (See our ad on page 1)	17, 27, 37
St-Raymond Veneers Inc./The Penrod Company, <i>Rotary, Slicer, Splicer</i> (See our ad, inside front cover)	44, 53, 59
Stiles Machinery, <i>Machinery Manufacturer</i>	76
Taihei Machinery Works, Ltd., <i>Machinery Distributor/Manufacturer</i>	76
Timber Products Company, <i>Prefinished, Stock Panel, Rotary, Splicer</i> (See our ad on page 4)	28, 37, 44, 60
Townsend Flooring Inc., <i>Flooring</i>	22
Venango Machine Co., <i>Supplier</i>	76
Veneer Technologies, Inc. (Moehring Group), <i>Splicer</i>	60
Vermont Wildwoods, <i>Slicer</i>	53
Vinavil Americas, <i>Adhesives Manufacturer</i>	76, 82
West Fraser, <i>Manufacturer</i>	77
Westmill Industries USA Corp., <i>Dryer Parts Supplier & Dryer Rebuilder</i>	77
Wisconsin Veneer & Plywood, Inc., <i>Cut-To-Size, Rotary</i> (See our ad on page 46)	17, 44
The Wood Gallery, Inc., <i>Cut-To-Size, Stock Panel</i>	17, 38

DHA Members By Major Product Category

HARDWOOD PLYWOOD MANUFACTURERS

Cahaba Veneer & Plywood, Inc.	14, 30
Chesterfield Wood Products Inc.	30
Columbia Forest Products	14,24,25,26,30,31,32,33
Commonwealth Plywood Inc	34
Darlington Veneer Co., Inc.	34
Eastern Panel Manufacturing Inc.	14
GL Veneer Co., Inc.	15, 34
Howell Plywood Corporation	15
Husky Plywood	35
Laminate Technologies	15, 35
Lignin Holdings, LLC	35
Manthei Wood Products	35
Murphy Company	16, 26, 36
Rockshield Engineered Wood Products ULC	36
Roseburg Forest Products Co.	27, 36
S.J. Morse Company	16
States Industries LLC	17, 27, 37
Timber Products Company	28, 37
Wisconsin Veneer & Plywood, Inc.	17
The Wood Gallery, Inc.	17, 38

ENGINEERED HARDWOOD FLOORING

AHF Products	20
Anderson Hardwood Floors, Inc.	20
From The Forest	20
Howell Hardwood Flooring	20
Mercier Wood Flooring	20
Mohawk Industries	21
Mullican Flooring	21
Nydree Flooring LLC	21
Shaw Hard Surfaces	22
Townsend Flooring Inc.	22

VENEER MANUFACTURERS AND SALES

COMPANIES/SALES AGENTS

Atlantic Veneer Corp.	40, 48
Besse Forest Products Group	42, 44, 53, 59
Birchland Plywood-Veneer Ltd.	48, 56
Birchwood Manufacturing Co.	40
Cahaba Veneer & Plywood, Inc.	40, 48
Clarke Veneers and Plywood	40, 56
Columbia Forest Products	41, 49
Commonwealth Plywood Co., Ltd.	42
Danzer Specialty Veneer (DSV)	49
Danzer Veneer Americas	50
Danzer Canada Inc.	56
Eldcan Forest Products Ltd.	51, 57
Forcey Lumber & Veneer Co	51
The Freeman Corp.	42, 51
Goodman Veneer and Lumber Co.	42
Great Lakes Veneer	43, 52, 57
Les Boises La Fleur Inc.	52, 58
Lignum Veneer	59
Manthei Wood Products	43, 59
Marwood	53
McCathay Timber, Inc.	43, 52
Moehring-Group	40, 48, 60
Northern Michigan Veneers, Inc.	44, 53, 59
The Penrod Co./St-Raymond Veneers	44, 53, 59
St-Raymond Veneers/The Penrod Co.	44, 53, 59
Timber Products Company	44, 60
Veneer Technologies Inc.	60
Vermont Wildwoods.	53
Wisconsin Veneer & Plywood, Inc.	44

DHA Members By Major Product Category

WHOLESALE STOCKING DISTRIBUTORS

Fessenden Hall, Inc.	62
Pittsburgh Forest Products Co.	62
Robert Weed Corp.	63
Roddis Lumber & Veneer Co. LP.....	63
Russell Plywood Inc.	64

SUPPLIER DIVISION MANUFACTURERS AND SALES

COMPANIES/SALES AGENTS

Altec	66
Arclin	66
Cargill Bioindustrial	66
Fisher + Rückle Service, Inc.	67
Franklin Adhesives & Polymers	67, 79
Grenzebach Corp.	68
Heinrich Kuper GmbH	68
Hexion Inc.	69, 81
J.M. Longyear LLC.....	69
Kinetic Company, Inc.	69
Kop-Coat Protection Products	69
Meinan Machinery Works, Inc.	70
Merritt Machinery, LLC	70
Numatic Finishing Corp.	70
Premiere Finishing & Coating	71
Raute Corp	71
Rocket Industrial	71
Roo Glue, Inc.	72, 79
Sherwin-Williams	72
Siemer Milling Company	73
SLR International Corp.	74
Specialty Organics Inc.	75, 79
Stiles Machinery	76
Taihei Machinery Works, Ltd.	76
Venango Machine Co.	76
Vinavil Americas	76, 82
West Fraser	77
Westmill Industries USA Corp.	77

ASSOCIATE MEMBERS

Altamont Company	78
Armstrong World Industries – Ceiling Division	78
Bamboo Ecologic Corp	78
Kimball International, Inc.	78
North Carolina State University	78
SparTek Industries	78



ENVIRONMENTAL CERTIFICATION CODES & WOOD SPECIES LIST

ENVIRONMENTAL CERTIFICATION CODES

F – FSC

Forest Stewardship Council Certified

S – SFI

Sustainable Forestry Initiative Certified

O

Other Environmental Certifications

WOOD SPECIES

NORTH AMERICAN

Alder
Ash, Black/White
Aspen
Baldcypress
Basswood
Beech
Birch
Butternut
Cedar, Red/Western
Cherry
Coffeetree, Kentucky
Cordia
Cypress
Douglas Fir
Elm
Gum
Hackberry
Hemlock
Hickory
Holly
Koa
Madrona
Maple, Hard/Soft
Myrtle
Oak, Red/White
Pecan
Persimmon
Pine
Poplar
Redwood
Sassafras
Satine
Spruce
Sweetgum
Sycamore
Tulipwood
Tupelo
Walnut, American/Claro
Willow, Black
Yew

AFRICAN

Afrormosia
Anegre
Avodire
Bubinga (Rosewood)
Cameron
Doussie
Ebony
Etimoe
Fuma
Iroko
Khaya (African Mahogany)
Korina
Koto (African Chestnut)
Limba
Makore
Mahogany
Movingui
Mozambique
(*Amazaque, Ovangkol*)
Okoume
Padauk
Samba (Obeche)
Sapele
Wenge
Zebrawood

EUROPEAN

Beech
Cypress
Elm, Carpathian
Larch
Oak, Bog
Oak, English Brown
Oak, European White/Spessart
Sycamore
Walnut
Yew

ASIAN (FIJI, INDIA, PHILIPPINES, SE ASIA, ETC.)

Apitong
Dakua (Fiji Birch)
Damanu (Fiji Cedar)
Jelutong
Kaudamu (Fiji Oak)
Kauvula (Fiji Ramin)
Keruing
Luan, Philippine
Laurel, East Indian
Mengkulang
Meranti
Mersawa
Paldao
Ramin
Rosewood, East Indian
Rubberwood
Satinwood
Sen (Japanese Ash)
Sonora
Tamo
Teak

SOUTH AMERICAN/ CENTRAL AMERICAN

Canelo
Cativo
Ceiba
Coigue
Eucalyptus (Chilean Oak)
Goncalo Alves
Grenadillo (Cocobolo)
Imbuia
Jacaranda (Rosewood)
Kelobra
Lapuna
Laurel, Black
(Louro Preto)
Mahogany, Honduras
Olivillo
Pau Ferro
Pau Marfim (Guatambu)
Pine
Prima Vera
Sande
Santo Wood
Tawa (Brazilian Oak)
Teak (Plantation)
Tepa
Ulmo

AUSTRALIAN

Eucalyptus
Lacewood
Pine, New Zealand
"Queensland Walnut"



CUT/MADE-TO-SIZE HARDWOOD PLYWOOD

Hardwood plywood cut-to-size and made-to-size by the manufacturer is used for furniture, cabinet components, and specialty products.

- Versatile – a variety of shapes and sizes available.
- Can be machined to meet customer needs.
- Eliminates the need to purchase and maintain expensive machinery.
- Reduces waste, inventory, and labor costs.
- Simplifies just-in-time sourcing.
- Customized product increases efficiency and yield.



Murphy Company provides cut-to-size panel solutions to the cabinet, fixture, institutional, and industrial products industries. Photo courtesy of MasterBrand

MANUFACTURERS OF MADE-TO-SIZE/CUT-TO-SIZE HARDWOOD PLYWOOD

SPECIES: R-Rotary, H-Half Round, P-Plain Sliced, Q-Quarter Sliced, I-Rift Cut

GLUE TYPES: Exterior – Technical; Exterior – Type I; Interior – Type II; NAF – No Added Formaldehyde; ULEF – Ultra-Low-Emitting Formaldehyde; NAUF – No Added Urea Formaldehyde; Phenolic – Phenol Formaldehyde; PVA – Polyvinyl Acetate

CAPITAL TESTING CERTIFICATIONS: EPA TSCA Title VI; CARB; ANSI/HPVA HP-1

	SIZES AVAILABLE	THICKNESS AVAILABLE	GLUE TYPES/ CAPITAL TESTING CERTIFICATION	CORE TYPES
<u>CAHABA VENEER & PLYWOOD, INC (M)</u> Sales: Pete Browder, President P.O. Box 98, 324 Mill St. Centreville, AL 35042 (205) 926-9797; Fax: (205) 926-5496 E-mail: Pete@cahabaveneer.com Web: www.cahabaveneer.com	48" X 48", 48" X 60" 48" X 72" 48" X 84" 60" X 60" 60" X 72" 60" X 84"	1/4" - 1-1/8"	CARB NAF PVA Type I PVA Type II TSCA Title VI	Veneer

SPECIES AVAILABLE: Southern – Ash-R, Gum-R, Hickory-R, Red and White Oak-R, Poplar-R, Sycamore-R, Tupelo Gum-R

SPECIALTY ITEMS: Cut-To-Size Panels for Furniture, Flooring and CNC Chop Shops

<u>COLUMBIA FOREST PRODUCTS</u> Old Fort, NC Plant Sales: Mike Young, Dr. of Mat'ls, Mktg, Cust. Svc 369 Columbia Carolina Road, Old Fort, NC 28762 (800) 438-6069; (828) 724-4191 E-mail: myoung@cfpwood.com Web: www.cfpwood.com Environmentally Certified Products Available: FSC® Mix (FSC-C017500)	48" X 96"	1/2" - 1-1/8"	CARB Type I Type II NAF TSCA Title VI	Calibrated Platforms Combination Veneer
--	-----------	------------------	---	---

SPECIES MANUFACTURED: Alder-P, Anigre-P, Ash-P, Aspen-R, Bamboo-P, Basswood-R, American Beech-R, P, European Beech-P, Birch-R,P, Butternut-P, Red, Clear, Aromatic Eastern, Western Red Cedar-P, Knotty Cedar-P, Cherry-P, Cypress-P, Grey Elm-P, American Red Elm-P, Engineered Veneer Obeche-P, Douglas Fir-P, Red Gum-P, Grandis-P, Red-P, Hemlock-P, Hickory-P, Holly-P, Ipe-P, Jatoba-P, Larch-P, Khaya-P, Maple-R,P, Red Maple-R, Red Oak-R, P, White Oak-P, Eastern/Western Clear, Knotty & Yellow Pine-P, Poplar-R,P, Sapele-P, American Sycamore-P, Tineo-P, Walnut-P, Wenge-P, Other Species-Inquire-R,P,Q,I

FINISH TYPES: UV Wood™ Clear in flat, satin gloss levels, SEFA-compliant LabCoat™, UV "fill and seal" only [trans shipped from Chatham, VA]

SPECIALTY ITEMS: PureBond® NAF MPX® featuring Meinan® peel x-bands; CAN/AM™ Value Panel; Classic Core®, Classic Lam® combi core; Europly™ multiply core; industrial blanks

<u>EASTERN PANEL MANUFACTURING INC.</u> Keith Van Asch 100 My Twinn Lane Chatham, VA 24531 (434) 432-3055 E-mail: easternpanel@comcast.net Web: www.easternpanel.com	TSCA Title VI
---	---------------

MANUFACTURERS OF MADE-TO-SIZE/CUT-TO-SIZE HARDWOOD PLYWOOD

SPECIES: R-Rotary, H-Half Round, P-Plain Sliced, Q-Quarter Sliced, I-Rift Cut

GLUE TYPES: Exterior – Technical; Exterior – Type I; Interior – Type II; NAF – No Added Formaldehyde; ULEF – Ultra-Low-Emitting Formaldehyde; NAUF – No Added Urea Formaldehyde; Phenolic – Phenol Formaldehyde; PVA – Polyvinyl Acetate

CAPITAL TESTING CERTIFICATIONS: EPA TSCA Title VI; CARB; ANSI/HPVA HP-1

	SIZES AVAILABLE	THICKNESS AVAILABLE	GLUE TYPES/ CAPITAL TESTING CERTIFICATION	CORE TYPES
<p><u>GL VENEER CO., INC.</u> Sales: Jeffrey Levin 2224 E. Slauson Ave. Huntington Park, CA 90255 (323) 582-5203; Fax: (323) 582-9681 E-mail: sales@glveneer.com Web: www.glveneer.com Environmentally Certified Products Available: F</p>	All sizes available	All thicknesses available	TSCA Title VI	All cores available
<p><u>HOWELL PLYWOOD CORPORATION</u> Sales: Nick Elmore, Andy McDuffie P.O. Box 250 Dothan, AL 36303 (334) 792-1197; Fax: (334) 792-8967 E-mail: bthagard@howellplywood.com Web: www.howellflooring.com</p>	Cut-To-Size	5/32" - 1"	Type II TSCA Title VI	Veneer Core
<p><u>LAMINATE TECHNOLOGIES, INC</u> 161 Maule Road, Tiffin, OH 44883 (419) 448-0812; Fax: (419) 448-0811 Web: www.Lamtech.net</p>	Widths 5' or less Lengths 10' or less	1/4" - 1-1/2"	PVA	MDF Particleboard Veneer Veneer Core MDF Skin
<p>SPECIES MANUFACTURED: Over 200 species of domestics and exotics SPECIALTY ITEMS: Live Edge Slabs, Logs, Veneer Faces, Sketch Faces, Exotic Veneer, Blueprint Matched Panels, Architectural Panels, Fire Rated Products, Oversize Plywood, Cut-To-Size Plywood, Custom Plywood, High Pressure Laminates</p>				
<p>SPECIES MANUFACTURED: Ash, Birch, Hickory, Red Oak (Southern), Walnut, White Oak (Southern or Northern) SPECIALTY ITEMS: Flooring Panels, Furniture Components</p>				

MANUFACTURERS OF MADE-TO-SIZE/CUT-TO-SIZE HARDWOOD PLYWOOD

SPECIES: R-Rotary, H-Half Round, P-Plain Sliced, Q-Quarter Sliced, I-Rift Cut

GLUE TYPES: Exterior – Technical; Exterior – Type I; Interior – Type II; NAF – No Added Formaldehyde; ULEF – Ultra-Low-Emitting Formaldehyde; NAUF – No Added Urea Formaldehyde; Phenolic – Phenol Formaldehyde; PVA – Polyvinyl Acetate

CAPITAL TESTING CERTIFICATIONS: EPA TSCA Title VI; CARB; ANSI/HPVA HP-1

	SIZES AVAILABLE	THICKNESS AVAILABLE	GLUE TYPES/ CAPITAL TESTING CERTIFICATION	CORE TYPES
<u>MURPHY COMPANY</u>	48" X 96"	1/4" -	Type I	Baltic Birch
Hardwood Plywood Division	48" X 84"	1-1/4"	Type II	Calibrated Platforms
Sales: John Murphy Jr., Executive VP	48" X 72"		NAF	Combination
2350 Prairie Rd., Eugene, OR 97402			NAUF	MDF
(541) 461-4545; Fax: (541) 461-4547			Phenolic	Particleboard
E-mail: sales@murphyplywood.com			PVA	Veneer
Web: www.murphyplywood.com			TSCA Title VI	
Environmentally Certified Products Available: FSC, CARB Exempt, ULEF			ANSI/HPVA HP-1	

SPECIES MANUFACTURED: Alder-P, Ash-R,P,Q, Beech-R,P,Q, Birch-R,P, Cedar-P, American Cherry-R,P,Q, Hickory-P, Knotty Pine-P, Maple-R,P,Q, Red & White Oak-R,P,Q,I, Pecan-P, Poplar-R,P, Walnut-P, Q, Other Domestic Species-R,P,Q, Imported Species-R,P,Q

SPECIALTY ITEMS: Aromatic Cedar Paneling, Edge-Banded, Cut-To-Size, Cabinet Door Inserts, Drawer Sides/Backs/Bottoms Bull-Nosed/Grooved, Finished Stock Panels, Furniture Panels, Kitchen Cabinet Components, Sequence Matched and Numbered, Custom Order Panels

<u>S.J. MORSE COMPANY</u>	Made-To-Size up to 60" X 144"	Two-Ply Through 3"	Type I Type II PVA	Combination MDF Particleboard
Sales: Dale Shaffer, Joel Stophia				
2736 Northwestern Pike, P.O. Box 600				
Capon Bridge, WV 26711				
(304) 856-3423; Fax: (304) 856-3073				
E-mail: info@sjmorse.com				
Web: www.sjmorse.com				
Environmentally Certified Products Available: FSC				

SPECIES MANUFACTURED: Exotics-R,H,P,Q,I, Any Species on Request-R,H,P,Q,I

SPECIALTY ITEMS: Rainforest Alliance-Audited Chain-of-Custody on FSC Certified Veneer Species, Core Materials and Panels Architectural and Blueprint Sequenced Panels and Doors; Cut-To-Size, Edge-Banded, Internal Lumber, CNC Machining. Burls, Cabinet Doors, Curved/Molded Panels, Doors, Furniture Panels, Table & Desk Tops – Flame Spread Rating A, B, C, 150 Canada

MANUFACTURERS OF MADE-TO-SIZE/CUT-TO-SIZE HARDWOOD PLYWOOD

SPECIES: R-Rotary, H-Half Round, P-Plain Sliced, Q-Quarter Sliced, I-Rift Cut

GLUE TYPES: Exterior – Technical; Exterior – Type I; Interior – Type II; NAF – No Added Formaldehyde; ULEF – Ultra-Low-Emitting Formaldehyde; NAUF – No Added Urea Formaldehyde; Phenolic – Phenol Formaldehyde; PVA – Polyvinyl Acetate

CAPITAL TESTING CERTIFICATIONS: EPA TSCA Title VI; CARB; ANSI/HPVA HP-1

	SIZES AVAILABLE	THICKNESS AVAILABLE	GLUE TYPES/ CAPITAL TESTING CERTIFICATION	CORE TYPES
<u>STATES INDUSTRIES LLC</u>	48" X 120"	5/32" -	Type II	Combination
Sales: Dan Hitchcock	48" X 96"	1-1/2"	NAF	MDF
P.O. Box 41150, Eugene, OR 97404	48" X 84"		PVA	Particleboard
(541) 688-7871; Fax: (541) 689-8051	48" X 72"		TSCA Title VI	Veneer
(800) 626-1981	Cut-To-Size		ANSI/HPVA HP-1	
E-mail: dhitchcock@statesind.com				
Web: www.statesind.com				
Environmentally Certified Products Available: FSC, SFI				

SPECIES MANUFACTURED: Anigre-P,Q, Ash-R,P,Q,I, Beech-R,P,Q, Birch-R,P,Q, Imported Birch-R, Butternut-P, Cedar-P, American Cherry-R,P,Q, Hickory-R,P, Maple-R,P,Q, Red & White Oak-R,P,Q,I, Pecan-R,P, Pine-P, Poplar-R,P, Sapele-P,Q, Sycamore-Q, Walnut-P,Q

SPECIALTY ITEMS: Aromatic Cedar Paneling, Banded, Drawer Sides/Backs Nosed/Grooved, Furniture Panels, Kitchen Cabinet Components, Machined Parts (Shaped), School/Church Components, Stock Panels, TV & Stereo, Table & Desk Tops, Veneer, Veneer - Reconstituted, Veneer/Plywood-Musical Instruments – Flame Spread Rating A, B, C, 150 Canada

<u>WISCONSIN VENEER & PLYWOOD, INC.</u>	24" X 36"	1/8" -	Type I	Combination
A Besse Forest Products Group Company	to 48" X 96"	4"	Type II	MDF
Greg Besse, Pres; Wayne Brock, V.P. Op	Cut-To-Size		Phenolic	Particleboard
P.O. Box 352, Gladstone, MI 49837			PVA	Veneer
(906) 428-3113; Fax: (906) 428-1525			TSCA Title VI	
E-mail: besse-sales@bessegroup.com				
Web: www.bessegroup.com				
Environmentally Certified Products Available: FSC, Other				

SPECIES MANUFACTURED: Ash-R,P, Basswood-R, Beech-R,P, Birch-R,P, American Cherry-R,P, Hickory-R,P, Maple-R,P, Red Oak-R,P, White Oak-R,P,Q, Pecan-R,P, Pine-R,P, Poplar-R,P, Walnut-R,P, Any Species on Request-R,P

SPECIALTY ITEMS: Die Boards, Furniture Panels, Kitchen Cabinet Components, School/Church Components, TV & Stereo, Table & Desk Tops, Veneer, Veneer/Plywood-Musical Instruments, Platforms

<u>THE WOOD GALLERY, INC.</u>	60" X 144"	3/32" -	Type I	Lumber
Sales: Barrett Lee	Cut-To-Size	1-1/2"	Type II	MDF
10724 Goodnight Lane, Dallas, TX 75220-2409			NAUF	Particleboard
(972) 869-9161; Fax: (972) 869-0449			CARB	Veneer
E-mail: barrett@woodgallery.biz			TSCA Title VI	
Web: www.woodgallery.biz				
Environmentally Certified Products Available: FSC, NAUF				

SPECIES MANUFACTURED: Exotics-R,H,Q, Anigre-P,Q, Ash-P,Q, Beech-P,Q, Birch-R,P,Q, Cedar-P,Q, American Cherry-P,Q, Hickory-P, Honduras Mahogany-P,Q, Maple-H,P,Q, Red & White Oak-P,Q,I, Pecan-P, Pine-P,Q, Poplar-P, Sapele-P,Q, Sycamore-P,Q, Walnut-P,Q, Any Species on Request-P,Q

SPECIALTY ITEMS: Aircraft Applications, Aromatic Cedar Paneling, Furniture Panels, Kitchen Cabinet Components, TV & Stereo, Table & Desk Tops, Veneered Raised Panels – Flame Spread Rating A

Facts About Decorative Hardwood Veneers

Types of Veneer Cuts

Depending on the manner in which a log is cut, strikingly different visual effects can be achieved with the wood's grain and characteristics. This is the beauty of working with hardwood veneer - that two logs of the same species, cut in different ways, produce distinctive, individual veneers! Six principal methods of cutting veneer are used: rotary, quarter slicing, plain slicing, rift-cut, half-round slicing and lengthwise slicing.



Rotary

Rotary veneer is produced by centering the log in a lathe and turning it against a broad cutting knife which is set into the log at a slight angle. Rotary cut veneer can be sufficiently wide to provide full sheet (one piece) faces.



Quarter Slicing

Quarter sliced veneer achieves a straight grain appearance by slicing approximately perpendicular to the annual growth rings.



Plain Slicing

Plain sliced veneer is veneer sliced parallel to the center of the log to achieve flat-cut veneer. The cathedrals are formed by the inner most growth rings as the veneer is cut through the flitch.



Rift-Cut

Rift-cut veneer is produced from the various species of oak. Oak has medullary ray cells which radiate from the center of the log like the curved spokes of a wheel. This straight grain cut is at a slight angle to the medullary rays to minimize ray fleck (flake).



Half-Round Slicing

Half-round slicing is cutting on an arch roughly parallel to the center of the log to achieve flat-cut veneer. The cathedrals can have more rounded tops since the grain is formed by the inner most growth rings as the veneer is cut through the flitch.



Lengthwise Slicing

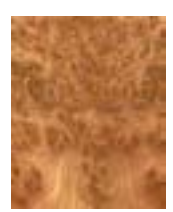
A board of flat sawn lumber is passed flat over a stationary knife. As it passes, a sheet of veneer is sliced from the bottom of the board. This produces a variegated figure.

Figure Characteristics of Veneers

The figure of the face veneer is of the utmost importance to the designer and architect, because the whole character of the completed installation may be determined by the choice of veneer to be used. When discussing figure in wood, those who deal with veneer usually describe the characteristics of the "movement" in the wood - whether it has wide or narrow heart, cathedral, crossfire, or is highly figured. Some of the more commonly used veneers are illustrated below.



Cherry,
American Black



Elm,
Carpathian Burl



Maple,
Hard



Oak,
Rift-Cut



Walnut,
Quartered

Our thanks to Sieling and Jones, Inc. for the photographs of veneer.



ENGINEERED HARDWOOD FLOORING

- Easy to install and maintain.
- Economical solution for renovating areas or replacing existing flooring.
- Adds warmth and beauty to any room.
- Dimensionally stable.
- Tight tolerances for consistent fit.
- Engineered for strength and stability.



Photo courtesy of AHF Products

MANUFACTURERS OF ENGINEERED HARDWOOD FLOORING

GLUE TYPES: Exterior – Technical; Exterior – Type I;

Interior – Type II; NAF – No Added Formaldehyde; ULEF – Ultra-Low-Emitting Formaldehyde;
NAUF – No Added Urea Formaldehyde; Phenolic – Phenol Formaldehyde; PVA – Polyvinyl Acetate

CAPITAL TESTING CERTIFICATIONS: EPA TSCA Title VI; CARB; ANSI/HPVA EF

FLOORING

	SIZES AVAILABLE	FACTORY FINISHED	UNFINISHED	GLUE TYPES/ CAPITAL TESTING CERTIFICATION	CRITICAL RADIANT FLUX ASTM E648
<p><u>AHF PRODUCTS</u> 3840 Hempland Road, Mountville, PA 17554 (717) 251-1139 E-mail: infor@ahfproducts.com Web: www.ahfproducts.com</p>	<p>Thickness: 3/8", 1/2", 3/4", 7/16", 9/16" Width: 3" - 9" Bevel, Square, Random Length Textures: Scraped, Smooth, Wire-brushed</p>	X	--	Type II TSCA Title VI	--

SPECIES MANUFACTURED: Rotary – Ash, Birch, Cherry, Hickory, Maple, Red & White Oak, Pecan, Walnut and Rotary Acrylic Infused

<p><u>ANDERSON HARDWOOD FLOORS, INC.</u> Sales: John Patterson P.O. Box 1155, Clinton, SC 29325-1155 (864) 833-6250; Fax: (864) 833-6664 E-mail: info@andersonfloors.com Web: www.andersonfloors.com Environmentally Certified Products Available: FSC</p>	<p>Thickness: 1/2", 3/8" Width: 2-1/4", 3", 3-1/2", 4", 4-1/2", 5", 6-1/4", 7"</p>	X	--	Type II PVA	--
--	--	---	----	----------------	----

SPECIES MANUFACTURED: Rotary - Elm, Hickory, Maple, Red & White Oak, Pecan

<p><u>FROM THE FOREST</u> Sales: Susan Lang 9004 Progress Way, Weston, WI 54476 (715) 359-2627; Fax: (715) 359-8624 E-mail: susan.lang@fromtheforest.com Web: www.fromtheforest.com</p>	<p>Thickness: 3/8", 1/2" Width: 4-1/4", 5", 6" 7-1/2", 8"</p>	X	X	PVA TSCA Title VI	Class 1
---	---	---	---	----------------------	---------

SPECIES MANUFACTURED: American Cherry, Hickory, Northern Hard & Red Maple, Northern Red & White Oak, Walnut

<p><u>HOWELL HARDWOOD FLOORING</u> Sales: Nick Elmore, Andy McDuffie P.O. Box 250, Dothan, AL 36302 (334) 792-1197; Fax: (334) 792-8967 E-mail: salesinfo@howellflooring.com Web: www.howellflooring.com</p>	<p>Thickness: 3/8", 1/2" Width: 2-1/4", 3", 4", 5" 6", 7" Bevel or Square</p>	X	X	Type II TSCA Title VI	--
---	---	---	---	--------------------------	----

SPECIES MANUFACTURED: Hickory, Red Oak (Southern), Walnut, White Oak (Southern or Northern)

<p><u>MERCIER WOOD FLOORING</u> 330 rue des entrepreneurs, Montmagny, QC Canada G5V 4T1 (418) 248-1785 Web: www.mercierwoodflooring.com</p>					
---	--	--	--	--	--

MANUFACTURERS OF ENGINEERED HARDWOOD FLOORING

GLUE TYPES: Exterior – Technical; Exterior – Type I;

Interior – Type II; NAF – No Added Formaldehyde; ULEF – Ultra-Low-Emitting Formaldehyde;
NAUF – No Added Urea Formaldehyde; Phenolic – Phenol Formaldehyde; PVA – Polyvinyl Acetate

CAPITAL TESTING CERTIFICATIONS: EPA TSCA Title VI; CARB; ANSI/HPVA EF

	SIZES AVAILABLE	FACTORY FINISHED	UNFINISHED	GLUE TYPES/ CAPITAL TESTING CERTIFICATION	CRITICAL RADIANT FLUX ASTM E648
<p><u>MOHAWK INDUSTRIES</u> Technical Contact: Karen Q. Haynes 508 East Morris Street, Dalton, GA 30721 (706) 272-1833 E-mail: Karen_Haynes@mohawkind.com Web: www.mohawkflooring.com</p> <p>Dealer Locator: (800) 266-4295 Environmentally Certified Products Available: Ultrawood FloorScore Certified Indoor Advantage Gold</p> <p>SPECIES MANUFACTURED: Hickory, Maple, Oak, Walnut</p>	<p>Thickness: 3/8" or 1/2" Width: 5" up to 9" Random Length</p>	X	--	<p>Type II TSCA Title VI</p>	Class 1
<p><u>MULLICAN FLOORING</u> 655 Woodlyn Road, Johnson City, TN 37601 (423) 283-4695; Fax: (423) 915-1213 Web: www.mullicanflooring.com Dealer locator: mullicanflooring.com Environmentally Certified Products Available: FSC, NWFA RPP</p> <p>SPECIES MANUFACTURED: Hickory, Maple, Red & White Oak</p>	<p>Thickness: 3/8", 7/16", 1/2" Width: 3", 5", 6", 6.5", 7"</p>	X	X	<p>TSCA Title VI</p>	--
<p><u>NYDREE FLOORING LLC</u> Sales: Jason Brubaker 1115 Vista Park Drive, Suite C Forest, VA 24551 (800) 682-5698; Fax: (434) 525-7879 E-mail: sales@nydreeflooring.com Web: www.nydreeflooring.com</p> <p>SPECIES MANUFACTURED: Acrylic Infused and Non-Acrylic Infused Sawn: American Walnut, Ash, Hickory, Maple, Red & White Oak, R&Q White Oak</p>	<p>Width: 2-2/3", 4" 5-1/4", 7-1/2", 8-1/4"</p>	X	X	<p>Type II NAF NAUF</p>	<p>All species are ASTM-E648 Class I with the Exception of Reclaimed Oak and Walnut</p>

MANUFACTURERS OF ENGINEERED HARDWOOD FLOORING

GLUE TYPES: Exterior – Technical; Exterior – Type I;
 Interior – Type II; NAF – No Added Formaldehyde; ULEF – Ultra-Low-Emitting Formaldehyde;
 NAUF – No Added Urea Formaldehyde; Phenolic – Phenol Formaldehyde; PVA – Polyvinyl Acetate
CAPITAL TESTING CERTIFICATIONS: EPA TSCA Title VI; CARB; ANSI/HPVA EF

FLOORING

	SIZES AVAILABLE	FACTORY FINISHED	UNFINISHED	GLUE TYPES/ CAPITAL TESTING CERTIFICATION	CRITICAL RADIANT FLUX ASTM E648
<p><u>SHAW HARD SURFACES</u> Sales: Kevin Thompson P.O. Drawer 2128, Mail Drop 071 Dalton, GA 30722 (706) 275-1871; Fax: (706) 275-2039 E-mail: kevin.thompson@shawinc.com Web: www.shawfloors.com Environmentally Certified Products Available: FSC</p>	Thickness: 3/8" Width: 3-1/4", 5"	X	--	Type II TSCA Title VI* (*Other TPC)	--

SPECIES MANUFACTURED: Rotary - American Cherry, Hickory, Maple, Red Oak, American Walnut

<p><u>TOWNSEND FLOORING INC.</u> Pennington Road Warren, AR 71671 (870) 226-7103; Fax: (870) 226-3084</p>	Thickness: 5/8" Width: 2.25", 3", 4", 5", 6", 7", 8"	X	X	EPI	ASTM E648
---	---	---	---	-----	-----------

SPECIES MANUFACTURED: Hickory, Maple, Red & White Oak, Black Walnut



PREFINISHED HARDWOOD PLYWOOD

**Hardwood plywood that is factory finished by the manufacturer.
Available in various veneer species, colors, overlays, finishes, and patterns.
For retail and industrial applications.**

- Consistent quality.
- Strong and dimensionally stable.
- Available in thicknesses from 1/10" to over 2".
- Lowers finish cost.
- Extremely durable.



Timber Product's FalconPly hardwood plywood is created using real wood veneers, featuring outstanding quality and beauty. FalconPly has a full range of domestic and exotic hardwood veneer species in a variety of grades and core options. For architectural grade series, Timber Products provides custom wood veneer panels for beautiful interiors with superb quality. FalconPly is environmentally certified and follows the strictest emission standards in North America. Photo courtesy of Timber Products

MANUFACTURERS OF PREFINISHED HARDWOOD PLYWOOD

SPECIES: R-Rotary, H-Half Round, P-Plain Sliced, Q-Quarter Sliced, I-Rift Cut

GLUE TYPES: Exterior – Technical; Exterior – Type I; Interior – Type II; NAF – No Added Formaldehyde;

ULEF – Ultra-Low-Emitting Formaldehyde; NAUF – No Added Urea Formaldehyde;

Phenolic – Phenol Formaldehyde; PVA – Polyvinyl Acetate

CAPITAL TESTING CERTIFICATIONS: EPA TSCA Title VI; CARB; ANSI/HPVA HP-1

	SIZES AVAILABLE	THICKNESS AVAILABLE		GLUE TYPES/ CAPITAL TESTING CERTIFICATION	CORE TYPES
		Industrial Panels	Wall Panels		
<u>COLUMBIA FOREST PRODUCTS</u> Chatham, VA Plant Sales: Mike Young, Dr. of Mat'ls, Mktg, Cust. Svc 100 Paul Rd., SW, Chatham, VA 24531 (800) 237-2428; (434) 432-2591 E-mail: myoung@cfpwood.com Web: www.cfpwood.com Environmentally Certified Products Available: FSC® MIX	48" X 120" 48" X 96" 48" X 84" 48" X 72"	5/32" - 1-1/4"	--	CARB Type I Type II NAF TSCA Title VI	Calibrated Platforms Combination MDF Particleboard Veneer

SPECIES MANUFACTURED: Alder-P, Anigre-P, Ash-P, Aspen-R, Bamboo-P, Basswood-R, American Beech-R, P, European Beech-P, Birch-R, P, Butternut-P, Cedar-P, Red, Clear, Aromatic Eastern, Western Red Cedar-P, Knotty Cedar-P, Cherry-P, Cypress-P, Grey Elm-P, American Red Elm-P, Engineered Veneer Obeche-P, Douglas Fir-P, Red Gum-P, Grandis-P, Red-P, Hemlock-P, Hickory-P, Holly-P, Ipe-P, Jatoba-P, Larch-P, Khaya-P, Maple-R,P, Red Maple-R, Red Oak-R, P, White Oak-P, Eastern/Western Clear, Knotty & Yellow Pine-P, Poplar-R,P, Sapele-P, American Sycamore-P, Tineo-P, Walnut-P, Wenge-P, Other Species-Inquire-R,P,Q,I

FINISH TYPES: UV Wood™ (clear, color); Labcoat™ UV SEFA rated (clear, color) finish or UV "fill and seal" only

<u>COLUMBIA FOREST PRODUCTS</u> Hearst, ON, Canada Plant Sales: Mike Young, Dr. of Mat'ls, Mktg, Cust. Svc 225 Prince Street, P.O. Box 10/Case Postale 10 Hearst, ON, Canada P0L 1N0 (888) 664-1964; (450) 437-1964 E-mail: myoung@cfpwood.com Web: www.cfpwood.com Environmentally Certified Products Available: FSC® MIX	60" X 108" 60" X 120" 48" X 120" 48" X 108" 48" X 96" 48" X 84" 48" X 72" 31" X 96" 31" X 108" 31" X 120" 29" X 96" 29" X 108" 29" X 120"	1/8" - 1-5/8"	--	CARB Type I Type II NAF TSCA Title VI	Calibrated Platforms Combination MDF Particleboard Veneer
---	---	------------------	----	---	---

SPECIES MANUFACTURED: Alder-P, Anigre-P, Ash-P, Aspen-R, Bamboo-P, Basswood-R, American Beech-R, P, European Beech-P, Birch-R, P, Butternut-P, Cedar-P, Red, Clear, Aromatic Eastern, Western Red Cedar-P, Knotty Cedar-P, Cherry-P, Cypress-P, Grey Elm-P, American Red Elm-P, Engineered Veneer Obeche-P, Douglas Fir-P, Red Gum-P, Grandis-P, Red-P, Hemlock-P, Hickory-P, Holly-P, Ipe-P, Jatoba-P, Larch-P, Khaya-P, Maple-R,P, Red Maple-R, Red Oak-R, P, White Oak-P, Eastern/Western Clear, Knotty & Yellow Pine-P, Poplar-R,P, Sapele-P, American Sycamore-P, Tineo-P, Walnut-P, Wenge-P, Other Species-Inquire-R,P,Q,I

FINISH TYPES: UV Wood™ (clear, color); Labcoat™ UV SEFA rated (clear, color) finish or UV "fill and seal" only

MANUFACTURERS OF PREFINISHED HARDWOOD PLYWOOD

SPECIES: R-Rotary, H-Half Round, P-Plain Sliced, Q-Quarter Sliced, I-Rift Cut

GLUE TYPES: Exterior – Technical; Exterior – Type I; Interior – Type II; NAF – No Added Formaldehyde;

ULEF – Ultra-Low-Emitting Formaldehyde; NAUF – No Added Urea Formaldehyde;

Phenolic – Phenol Formaldehyde; PVA – Polyvinyl Acetate

CAPITAL TESTING CERTIFICATIONS: EPA TSCA Title VI; CARB; ANSI/HPVA HP-1

	SIZES AVAILABLE	THICKNESS AVAILABLE		GLUE TYPES/ CAPITAL TESTING CERTIFICATION	CORE TYPES
		Industrial Panels	Wall Panels		
<u>COLUMBIA FOREST PRODUCTS</u>	60" X 108"	1/8" -	--	CARB	Calibrated Platforms
Kitchener, ON, Canada Plant	60" X 120"	1-5/8"		Type I	Combination
Sales: Mike Young, Dr. of Mat'ls, Mktg, Cust. Svc	48" X 120"			Type II	MDF
21 Balzer Road	48" X 108"			NAF	Particleboard
Kitchener, ON, Canada N2C 1X5	48" X 96"			TSCA Title VI	Veneer
(888) 664-1964; (450) 437-1964	48" X 84"				
E-mail: myoung@cfpwood.com	31" X 96"				
Web: www.cfpwood.com	31" X 108"				
Environmentally Certified Products Available:	31" X 120"				
FSC® MIX	29" X 96"				
	29" X 108"				
	29" X 120"				

SPECIES MANUFACTURED: Alder-P, Anigre-P, Ash-P, Aspen-R, Bamboo-P, Basswood-R, American Beech-R, P, European Beech-P, Birch-R,P, Butternut-P, Cedar-P, Red, Clear, Aromatic Eastern, Western Red Cedar-P, Knotty Cedar-P, Cherry-P, Cypress-P, Grey Elm-P, American Red Elm-P, Engineered Veneer Obeche-P, Douglas Fir-P, Red Gum-P, Grandis-P, Red-P, Hemlock-P, Hickory-P, Holly-P, Ipe-P, Jatoba-P, Larch-P, Khaya-P, Maple-R,P, Red Maple-R, Red Oak-R, P, White Oak-P, Eastern/Western Clear, Knotty & Yellow Pine-P, Poplar-R,P, Sapele-P, American Sycamore-P, Tineo-P, Walnut-P, Wenge-P, Other Species-Inquire-R,P,Q,I

FINISH TYPES: UV Wood™ (clear, color); Labcoat™ UV SEFA rated (clear, color) finish or UV "fill and seal" only

<u>COLUMBIA FOREST PRODUCTS</u>	48" X 120"	5/32" -	--	CARB	Calibrated Platforms
Klamath Falls, OR Plant	48" X 96"	1-1/2"		Type II	Combination
Sales: Mike Young, Dr. of Mat'ls, Mktg, Cust. Svc	48" X 84"			NAF	MDF
4949 S Hwy 97, Klamath Falls, OR 97601	48" X 72"			TSCA Title VI	Particleboard
(800) 547-1791; (541) 882-7281					Veneer
E-mail: myoung@cfpwood.com					
Web: www.cfpwood.com					
Environmentally Certified Products Available: FSC® Mix					

SPECIES MANUFACTURED: Alder-P, Anigre-P, Ash-P, Aspen-R, Bamboo-P, Basswood-R, American Beech-R, P, European Beech-P, Birch-R,P, Butternut-P, Cedar-P, Red, Clear, Aromatic Eastern, Western Red Cedar-P, Knotty Cedar-P, Cherry-P, Cypress-P, Grey Elm-P, American Red Elm-P, Engineered Veneer Obeche-P, Douglas Fir-P, Red Gum-P, Grandis-P, Red-P, Hemlock-P, Hickory-P, Holly-P, Ipe-P, Jatoba-P, Larch-P, Khaya-P, Maple-R,P, Red Maple-R, Red Oak-R, P, White Oak-P, Eastern/Western Clear, Knotty & Yellow Pine-P, Poplar-R,P, Sapele-P, American Sycamore-P, Tineo-P, Walnut-P, Wenge-P, Other Species-Inquire-R,P,Q,I

FINISH TYPES: UV Wood™ (clear); Labcoat™ UV SEFA rated (clear) finish or UV "fill and seal" only

MANUFACTURERS OF PREFINISHED HARDWOOD PLYWOOD

SPECIES: R-Rotary, H-Half Round, P-Plain Sliced, Q-Quarter Sliced, I-Rift Cut

GLUE TYPES: Exterior – Technical; Exterior – Type I; Interior – Type II; NAF – No Added Formaldehyde; ULEF – Ultra-Low-Emitting Formaldehyde; NAUF – No Added Urea Formaldehyde; Phenolic – Phenol Formaldehyde; PVA – Polyvinyl Acetate

CAPITAL TESTING CERTIFICATIONS: EPA TSCA Title VI; CARB; ANSI/HPVA HP-1

	SIZES AVAILABLE	THICKNESS AVAILABLE		GLUE TYPES/ CAPITAL TESTING CERTIFICATION	CORE TYPES
		Industrial Panels	Wall Panels		
<u>COLUMBIA FOREST PRODUCTS</u>	60" X 108"	1/8" -	--	CARB	Calibrated Platforms
St. Casimir, QC, Canada Plant	60" X 120"	1-5/8"		Type I	Combination
Sales: Mike Young, Dr. of Mat'ls, Mktg, Cust. Svc	48" X 120"			Type II	MDF
420 Route Guibault	48" X 108"			NAF	Particleboard
St. Casimir, QC, Canada GOA 3L0	48" X 96"			TSCA Title VI	Veneer
(888) 664-1964; (450) 437-1964	48" X 84"				
E-mail: myoung@cfpwood.com	48" X 72"				
Web: www.cfpwood.com	31" X 96"				
Environmentally Certified Products Available:	31" X 108"				
FSC® MIX	31" X 120"				
	29" X 96"				
	29" X 108"				
	29" X 120"				

SPECIES MANUFACTURED: Alder-P, Anigre-P, Ash-P, Aspen-R, Bamboo-P, Basswood-R, American Beech-R, P, European Beech-P, Birch-R,P, Butternut-P, Cedar-P, Red, Clear, Aromatic Eastern, Western Red Cedar-P, Knotty Cedar-P, Cherry-P, Cypress-P, Grey Elm-P, American Red Elm-P, Engineered Veneer Obeche-P, Douglas Fir-P, Red Gum-P, Grandis-P, Red-P, Hemlock-P, Hickory-P, Holly-P, Ipe-P, Jatoba-P, Larch-P, Khaya-P, Maple-R,P, Red Maple-R, Red Oak-R, P, White Oak-P, Eastern/Western Clear, Knotty & Yellow Pine-P, Poplar-R,P, Sapele-P, American Sycamore-P, Tineo-P, Walnut-P, Wenge-P, Other Species-Inquire-R,P,Q,I

FINISH TYPES: UV Wood™ (clear, color); Labcoat™ UV SEFA rated (clear, color) finish or UV "fill and seal" only

<u>MURPHY COMPANY</u>	48" X 96"	5/32" -	1/8"	Type I	Baltic Birch
Hardwood Plywood Division	48" X 84"	1-1/4"	5/32"	Type II	Calibrated Platforms
Sales: John Murphy Jr., Executive VP	48" X 72"		5.0mm	NAUF	Combination
2350 Prairie Road, Eugene, OR 97402			1/4"	NAF	MDF
(541) 461-4545; Fax: (541) 461-4547			7/16"	Phenolic	Particleboard
E-mail: sales@murphyplywood.com				PVA	Veneer
Web: www.murphyplywood.com				TSCA Title VI	
Environmentally Certified Products Available: FSC, CARB Exempt, ULEF				ANSI/HPVA HP-1	

SPECIES MANUFACTURED: Alder-P, Ash-R,P,Q, Beech-R,P,Q, Birch-R,P, Cedar-P, American Cherry-R,P,Q, Hickory-P, Knotty Pine-P, Maple-R,P,Q, Red & White Oak-R,P,Q,I, Pecan-P, Poplar-R,P, Walnut-P, Q, Other Domestic Species-R,P,Q, Imported Species-R,P,Q

FINISH TYPES: Print, Stain, Prime, Color, Ultra Violet Topcoat

INDUSTRIAL PANELS: Banded/Edge Banded, Cut-To-Size, Furniture Panels, Cabinet Fronts, Drawer Sides/Backs: Edge Banded/Nosed/Grooved

WALL PANELS: Paper/Vinyl Overlay/Melamine/Printed - Flame Spread Rating C

MANUFACTURERS OF PREFINISHED HARDWOOD PLYWOOD

SPECIES: R-Rotary, H-Half Round, P-Plain Sliced, Q-Quarter Sliced, I-Rift Cut

GLUE TYPES: Exterior – Technical; Exterior – Type I; Interior – Type II; NAF – No Added Formaldehyde;

ULEF – Ultra-Low-Emitting Formaldehyde; NAUF – No Added Urea Formaldehyde;

Phenolic – Phenol Formaldehyde; PVA – Polyvinyl Acetate

CAPITAL TESTING CERTIFICATIONS: EPA TSCA Title VI; CARB; ANSI/HPVA HP-1

	SIZES AVAILABLE	THICKNESS AVAILABLE		GLUE TYPES/ CAPITAL TESTING CERTIFICATION	CORE TYPES
		Industrial Panels	Wall Panels		
<u>ROSEBURG FOREST PRODUCTS CO.</u> Sales: John Biedermann 3660 Gateway Street Springfield, OR 97477 (678) 474-1257 E-mail: JohnB@rfpco.com Web: www.Roseburg.com Environmentally Certified Products Available: FSC, Greenguard, CARB ULEF Exempt	48" X 120" 48" X 96"	5/32" - 1-1/4"	5/32" - 1-1/4"	Type II TSCA Title VI* (*other TPC)	Calibrated Platforms Combination MDF Particleboard Veneer

SPECIES MANUFACTURED: Red Alder-P, Ash-R,P,Q, Bamboo-P,Q, Basswood-R, Beech-P,Q, Birch-R,P,Q, Butternut-P, Cedar-P, Aromatic Cedar-P, Cherry-P,Q, Fir-P,Q, Hickory-P, Idaho White Pine-P, Knotty Pine-P, Maple-R,P,Q, Red and White Oak-R,P,Q,I, Sycamore-P,Q, Walnut-P,Q, Other Imported and Domestic Species Available Upon Request

FINISH TYPES: UV Topcoat, Catalyzed Water Based Paint

WALL PANELS: Architectural – Flame Spread Rating "C"

SPECIALTY ITEMS: RediBead Bead Board, RediPly-Hardwood Veneer Face/TFL Laminate Back, Sequence Matched and Numbered, Veneer-Reconstituted

<u>STATES INDUSTRIES LLC</u> Sales: Dan Hitchcock P.O. Box 41150, Eugene, OR 97404 (541) 688-7871; Fax: (541) 689-8051 (800) 626-1981 E-mail: dhitchcock@statesind.com Web: www.statesind.com Environmentally Certified Products Available: FSC, SFI	48" X 120" 48" X 96" 48" X 90" 48" X 84" 48" X 72"	5/32" - 1-1/2"	5/32" - 3/8"	Type II TSCA Title VI ANSI/HPVA HP-1	Combination MDF Particleboard Veneer
---	--	-------------------	-----------------	---	---

SPECIES MANUFACTURED: Ash-R,P,Q,I, Beech-R,P,Q, Birch-R,Q, Cedar-P, American Cherry-R,P,Q, Hickory-R,P, Knotty Pine-P, Maple-R,P,Q, Red & White Oak-R,P,Q,I, Pecan-R,P, Poplar-R,P, Walnut-P,Q, Other Domestic Species-R,P, Imported Species-P

FINISH TYPES: Print, Stain, Ultra Violet Topcoat

INDUSTRIAL PANELS: Banded/Edge Banded, Cut-To-Size/Furniture Panels, Drawer Sides/Backs Nosed/Grooved, Machine Parts (Shaped) – Flame Spread Rating A, B, C, 150 Canada

WALL PANELS: Architectural – Flame Spread Rating C

MANUFACTURERS OF PREFINISHED HARDWOOD PLYWOOD

SPECIES: R-Rotary, H-Half Round, P-Plain Sliced, Q-Quarter Sliced, I-Rift Cut

GLUE TYPES: Exterior – Technical; Exterior – Type I; Interior – Type II; NAF – No Added Formaldehyde;

NAUF – No Added Urea Formaldehyde; Phenolic – Phenol Formaldehyde; PVA – Polyvinyl Acetate

CAPITAL TESTING CERTIFICATIONS: EPA TSCA Title VI; CARB; ANSI/HPVA HP-1

	SIZES AVAILABLE	THICKNESS AVAILABLE		GLUE TYPES/ CAPITAL TESTING CERTIFICATION	CORE TYPES
		Industrial Panels	Wall Panels		
<u>TIMBER PRODUCTS COMPANY</u> Sales: Davis Edwards, Sales Manager - East 2701 S. Harper Rd., Corinth, MS 38834 (901) 624-8201; Fax: (901) 757-9482 (800) 477-6195 E-mail: dedwards@timberproducts.com Web: www.timberproducts.com Environmentally Certified Products Available: FSC	48" X 96" 48" X 84" 48" X 72" 48" X 120"	5.2mm - 1-1/4"	--	Type II CARB PVA ULEF TSCA Title VI	MDF Particleboard Veneer Calibrated Platforms Combination OSB (Oriented Strand Board)

SPECIES MANUFACTURED: Ash-R,P,I, Beech-R,P, Birch-R, Cedar-P, American Cherry-R,P,Q, Hickory-R,P, Knotty Pine-P, Maple-R,P,Q, Red & White Oak-R,P,I, Pecan-P, Poplar-R, Walnut-P, Imported Species-R,P, Veneer Reconstituted
FINISH TYPES: Ultra Violet Topcoat

<u>TIMBER PRODUCTS COMPANY</u> Sales: Alicia Powell, Sales Manager - West 25 E McAndrews Rd., Medford, OR 97501 Cell: (706) 513-4016; Office: (541) 744-4269 E-mail: apowell@timberproducts.com Web: www.timberproducts.com Environmentally Certified Products Available: FSC	48" X 120" 48" X 96" 48" X 84" 48" X 72" 48" X 48"	5/32" - 1-1/4"	--	Type I Type II CARB NAF PHENOLIC PVA TSCA Title VI	Combination MDF Particleboard Veneer Calibrated Platforms
--	--	-------------------	----	--	---

SPECIES MANUFACTURED: Ash-R,P,I, Beech-P, Birch-R,P, Cedar-R, American Cherry-R,P,I, Hickory-R,P, Knotty Pine-P, Maple-R,P,I, Red & White Oak-R,P,I, Pecan-P, Poplar-R, Walnut-P, Imported Species-R,P, Veneer Reconstituted

FINISH TYPES: Ultra Violet Topcoat

INDUSTRIAL PANELS: Banded/Edge Banded, Cut-To-Size/Furniture Panels, Drawer Sides/Backs Nosed/Grooved



HARDWOOD PLYWOOD STOCK PANELS

Hardwood plywood stock panels are manufactured in standard sizes such as 4' x 8' or 4' x 10' and are commonly 1/4" to 3/4" in thickness. Stock panels are available through distribution centers for industrial users or through mass merchandisers for commercial and do-it-yourself customers. Frequently cut to component size by the end user.

- Consistent quality.
- Diverse selection of species.
- Strong and dimensionally stable.
- A variety of cores: veneer, MDF, particleboard, lumber, and combination core.
- Can be obtained finished.



PureBond® hardwood plywood in the Carl H. Lindner College of Business at the University of Cincinnati. Photo courtesy of Columbia Forest Products

MANUFACTURERS OF HARDWOOD PLYWOOD STOCK PANELS

SPECIES: R-Rotary, H-Half Round, P-Plain Sliced, Q-Quarter Sliced, I-Rift Cut

GLUE TYPES: Exterior – Technical; Exterior – Type I; Interior – Type II; NAF – No Added Formaldehyde; ULEF – Ultra-Low-Emitting Formaldehyde; NAUF – No Added Urea Formaldehyde; Phenolic – Phenol Formaldehyde; PVA – Polyvinyl Acetate

CAPITAL TESTING CERTIFICATIONS: EPA TSCA Title VI; CARB; ANSI/HPVA HP-1

	SIZES AVAILABLE	THICKNESS AVAILABLE Industrial Panels Wall Panels	GLUE TYPES/ CAPITAL TESTING CERTIFICATION	CORE TYPES
<p><u>CAHABA VENEER & PLYWOOD, INC (M)</u> Sales: Pete Browder, President P.O. Box 98, 324 Mill St. Centreville, AL 35042 (205) 926-9797; Fax: (205) 926-5496 E-mail: Pete@cahabaveneer.com Web: www.cahabaveneer.com</p>	60" X 60" 48" X 96"	1/4" - 1-1/8"	CARB NAF PVA Type I PVA Type II TSCA Title VI	Veneer

SPECIES AVAILABLE: Southern – Ash-R, Gum-R, Hickory-R, Red and White Oak-R, Poplar-R, Sycamore-R, Tupelo Gum-R

SPECIALTY ITEMS: High Strength, Extra Thick Hardwood Panels

<p><u>CHESTERFIELD WOOD PRODUCTS INC.</u> Sales: M. Todd Powell, V.P. P.O. Box 1792, Morganton, NC 28680 (828) 433-0042; Fax: (828) 437-6525 E-mail: bvi1981@att.net</p>	All Sizes up to 60" X 110"	1/16" - 1-1/2"	Type II NAF TSCA Title VI	Calibrated Platforms Combination Lumber MDF Particleboard Veneer
--	----------------------------------	-------------------	---------------------------------	---

SPECIES MANUFACTURED: Exotics-P, Ash-H,P,Q, Beech-P, Birch-R,H,P, Burls-P, Aromatic Cedar-P, American Cherry-H,P,Q, Hickory-H,P, Idaho White Pine-P, Knotty Pine-P, Honduras Mahogany-P, Maple-R,H,P,Q, Red Oak-R,H,P, White Oak-R,H,P,Q, Pecan-H,P, Poplar-R,H,P, Walnut-H,P,Q

SPECIALTY ITEMS: Aromatic Cedar Paneling, Blueprint Matched Panels, Cut-To-Size, Doors, Finished Stock Panels, Flitch Selection Available, Kitchen Cabinet Components, Matched Sets, Seat Backs, Sketch Face Panels, Veneer - Reconstituted

<p><u>COLUMBIA FOREST PRODUCTS</u> Chatham, VA Plant Sales: Mike Young, Dr. of Mat'ls, Mktg, Cust. Svc 100 Paul Rd., SW, Chatham, VA 24531 (800) 237-2428; (434) 432-2591 E-mail: myoung@cfpwood.com Web: www.cfpwood.com Environmentally Certified Products Available: FSC® MIX (FSC-C017500)</p>	48" X 72" 84", 96", 120"	5/32" - 1-1/4"	CARB Type I Type II NAF TSCA Title VI	Calibrated Platforms Combination MDF Particleboard Veneer
---	-----------------------------	-------------------	---	---

SPECIES MANUFACTURED: Alder-P, Anigre-P, Ash-P, Aspen-R, Bamboo-P, Basswood-R, American Beech-R, P, European Beech-P, Birch-R,P, Butternut-P, Red, Clear, Aromatic Eastern, Western Red Cedar-P, Knotty Cedar-P, Cherry-P, Cypress-P, Grey Elm-P, American Red Elm-P, Engineered Veneer Obeche-P, Douglas Fir-P, Red Gum-P, Grandis-P, Red-P, Hemlock-P, Hickory-P, Holly-P, Ipe-P, Jatoba-P, Larch-P, Khaya-P, Maple-R,P, Red Maple-R, Red Oak-R, P, White Oak-P, Eastern/Western Clear, Knotty & Yellow Pine-P, Poplar-R,P, Sapele-P, American Sycamore-P, Tineo-P, Walnut-P, Wenge-P, Other Species-Inquire-R,P,Q,I

FINISH TYPES: UV Wood™ Clear in flat, satin, medium gloss levels, SEFA-compliant Labcoat®, OEM custom color programs with custom gloss: custom stain, foil application

SPECIALTY ITEMS: PureBond® NAF MPX® featuring Meinan® peel x-bands; Beaded Panels; Classic Core®, Classic Lam® combi core; 8' x 4' counterfront; Europly™ Baltic birch core; Radius® bending; SMN Sets; Enhanced Grain™ (wire brush)

MANUFACTURERS OF HARDWOOD PLYWOOD STOCK PANELS

SPECIES: R-Rotary, H-Half Round, P-Plain Sliced, Q-Quarter Sliced, I-Rift Cut

GLUE TYPES: Exterior – Technical; Exterior – Type I; Interior – Type II; NAF – No Added Formaldehyde; ULEF – Ultra-Low-Emitting Formaldehyde; NAUF – No Added Urea Formaldehyde; Phenolic – Phenol Formaldehyde; PVA – Polyvinyl Acetate

CAPITAL TESTING CERTIFICATIONS: EPA TSCA Title VI; CARB; ANSI/HPVA HP-1

	SIZES AVAILABLE	THICKNESS AVAILABLE	GLUE TYPES/ CAPITAL TESTING CERTIFICATION	CORE TYPES
		Industrial Panels	Wall Panels	
<u>COLUMBIA FOREST PRODUCTS</u>	60" X 108"	1/8" -	CARB	Calibrated Platforms
Kitchener, ON, Canada Plant	60" X 120"	1-5/8"	Type I	Combination
Sales: Mike Young, Dr. of Mat'ls, Mktg, Cust. Svc	48" X 120"		Type II	MDF
21 Balzer Road	48" X 108"		NAF	Particleboard
Kitchener, ON, Canada N2C 1X5	48" X 96"		TSCA Title VI	Veneer
(888) 664-1964; (450) 437-1964	48" X 84"			
E-mail: myoung@cfpwood.com	31" X 96"			
Web: www.cfpwood.com	31" X 108"			
Environmentally Certified Products Available:	31" X 120"			
FSC® MIX (FSC-C017500)	29" X 96"			
	29" X 108"			
	29" X 120"			

SPECIES MANUFACTURED: Alder-P, Anigre-P, Ash-P, Aspen-R, Bamboo-P, Basswood-R, American Beech-R, P, European Beech-P, Birch-R,P, Butternut-P, Red, Clear, Aromatic Eastern, Western Red Cedar-P, Knotty Cedar-P, Cherry-P, Cypress-P, Grey Elm-P, American Red Elm-P, Engineered Veneer Obeche-P, Douglas Fir-P, Red Gum-P, Grandis-P, Red-P, Hemlock-P, Hickory-P, Holly-P, Ipe-P, Jatoba-P, Larch-P, Khaya-P, Maple-R,P, Red Maple-R, Red Oak-R, P, White Oak-P, Eastern/Western Clear, Knotty & Yellow Pine-P, Poplar-R,P, Sapele-P, American Sycamore-P, Tineo-P, Walnut-P, Wenge-P, Other Species-Inquire-R,P,Q,I

FINISH TYPES: Polypropylene Overlay [Premeer], UV Topcoat, SEFA Certified, Fumed Oak

SPECIALTY ITEMS: PVA NAF composite assemblies in NAF and ULEF, Classic Core, Thin panels, CFP 60"s five foot wide composites, 8' x 4' counterfront

<u>COLUMBIA FOREST PRODUCTS</u>	48" X 72'	5/32" -	CARB	Calibrated Platforms
Klamath Falls, OR Plant	84", 96", 120"	1-1/2"	Type II	Combination
Sales: Mike Young, Dr. of Mat'ls, Mktg, Cust. Svc			NAF	MDF
4949 S. Hwy 97, Klamath Falls, OR 97601			TSCA Title VI	Particleboard
(800) 547-1791; (541) 882-7281				Veneer
E-mail: myoung@cfpwood.com				
Web: www.cfpwood.com				
Environmentally Certified Products Available: FSC® Mix (FSC-C017500)				

SPECIES MANUFACTURED: Alder-P, Anigre-P, Ash-P, Aspen-R, Bamboo-P, Basswood-R, American Beech-R, P, European Beech-P, Birch-R,P, Butternut-P, Red, Clear, Aromatic Eastern, Western Red Cedar-P, Knotty Cedar-P, Cherry-P, Cypress-P, Grey Elm-P, American Red Elm-P, Engineered Veneer Obeche-P, Douglas Fir-P, Red Gum-P, Grandis-P, Red-P, Hemlock-P, Hickory-P, Holly-P, Ipe-P, Jatoba-P, Larch-P, Khaya-P, Maple-R,P, Red Maple-R, Red Oak-R, P, White Oak-P, Eastern/Western Clear, Knotty & Yellow Pine-P, Poplar-R,P, Sapele-P, American Sycamore-P, Tineo-P, Walnut-P, Wenge-P, Other Species-Inquire-R,P,Q,I

FINISH TYPES: UV Wood™ Clear in flat, satin gloss levels, SEFA-compliant LabCoat™, UV "fill and seal"

SPECIALTY ITEMS: PureBond® NAF MPX® featuring Meinan® peel x-bands; Classic Core®, Classic Lam® combi core; CAN/AM™ Value Panel, 8' x 4' counterfront; Europly™ Baltic birch core; industrial blanks; Radius® bending; SM&N sets

MANUFACTURERS OF HARDWOOD PLYWOOD STOCK PANELS

SPECIES: R-Rotary, H-Half Round, P-Plain Sliced, Q-Quarter Sliced, I-Rift Cut

GLUE TYPES: Exterior – Technical; Exterior – Type I; Interior – Type II; NAF – No Added Formaldehyde; ULEF – Ultra-Low-Emitting Formaldehyde; NAUF – No Added Urea Formaldehyde; Phenolic – Phenol Formaldehyde; PVA – Polyvinyl Acetate

CAPITAL TESTING CERTIFICATIONS: EPA TSCA Title VI; CARB; ANSI/HPVA HP-1

	SIZES AVAILABLE	THICKNESS AVAILABLE	GLUE TYPES/ CAPITAL TESTING CERTIFICATION	CORE TYPES
		Industrial Panels	Wall Panels	
<u>COLUMBIA FOREST PRODUCTS</u>	60" X 108"	1/8" -	CARB	Calibrated Platforms
Kitchener, ON, Canada Plant	60" X 120"	1-5/8"	Type I	Combination
Sales: Mike Young, Dr. of Mat'ls, Mktg. Cust. Svc	48" X 120"		Type II	MDF
21 Balzer Road	48" X 108"		NAF	Particleboard
Kitchener, ON, Canada N2C 1X5	48" X 96"		TSCA Title VI	Veneer
(888) 664-1964; (450) 437-1964	48" X 84"			
E-mail: myoung@cfpwood.com	31" X 96"			
Web: www.cfpwood.com	31" X 108"			
Environmentally Certified Products Available:	31" X 120"			
FSC® MIX (FSC-C017500)	29" X 96"			
	29" X 108"			
	29" X 120"			

SPECIES MANUFACTURED: Alder-P, Anigre-P, Ash-P, Aspen-R, Bamboo-P, Basswood-R, American Beech-R, P, European Beech-P, Birch-R,P, Butternut-P, Red, Clear, Aromatic Eastern, Western Red Cedar-P, Knotty Cedar-P, Cherry-P, Cypress-P, Grey Elm-P, American Red Elm-P, Engineered Veneer Obeche-P, Douglas Fir-P, Red Gum-P, Grandis-P, Red-P, Hemlock-P, Hickory-P, Holly-P, Ipe-P, Jatoba-P, Larch-P, Khaya-P, Maple-R,P, Red Maple-R, Red Oak-R, P, White Oak-P, Eastern/Western Clear, Knotty & Yellow Pine-P, Poplar-R,P, Sapele-P, American Sycamore-P, Tineo-P, Walnut-P, Wenge-P, Other Species-Inquire-R,P,Q,I

FINISH TYPES: Polypropylene Overlay [Premeer], UV Topcoat, SEFA Certified, Fumed Oak

SPECIALTY ITEMS: PVA NAF composite assemblies in NAF and ULEF, Classic Core, Thin panels, CFP 60"s five foot wide composites, 8' x 4' counterfront

<u>COLUMBIA FOREST PRODUCTS</u>	48" X 72'	5/32" -	CARB	Calibrated Platforms
Klamath Falls, OR Plant	84", 96", 120"	1-1/2"	Type II	Combination
Sales: Mike Young, Dr. of Mat'ls, Mktg. Cust. Svc			NAF	MDF
4949 S. Hwy 97, Klamath Falls, OR 97601			TSCA Title VI	Particleboard
(800) 547-1791; (541) 882-7281				Veneer
E-mail: myoung@cfpwood.com				
Web: www.cfpwood.com				
Environmentally Certified Products Available: FSC® Mix (FSC-C017500)				

SPECIES MANUFACTURED: Alder-P, Anigre-P, Ash-P, Aspen-R, Bamboo-P, Basswood-R, American Beech-R, P, European Beech-P, Birch-R,P, Butternut-P, Red, Clear, Aromatic Eastern, Western Red Cedar-P, Knotty Cedar-P, Cherry-P, Cypress-P, Grey Elm-P, American Red Elm-P, Engineered Veneer Obeche-P, Douglas Fir-P, Red Gum-P, Grandis-P, Red-P, Hemlock-P, Hickory-P, Holly-P, Ipe-P, Jatoba-P, Larch-P, Khaya-P, Maple-R,P, Red Maple-R, Red Oak-R, P, White Oak-P, Eastern/Western Clear, Knotty & Yellow Pine-P, Poplar-R,P, Sapele-P, American Sycamore-P, Tineo-P, Walnut-P, Wenge-P, Other Species-Inquire-R,P,Q,I

FINISH TYPES: UV Wood™ Clear in flat, satin gloss levels, SEFA-compliant LabCoat™, UV "fill and seal"

SPECIALTY ITEMS: PureBond® NAF MPX® featuring Meinan® peel x-bands; Classic Core®, Classic Lam® combi core; CAN/AM™ Value Panel, 8' x 4' counterfront; Europly™ Baltic birch core; industrial blanks; Radius® bending; SM&N sets

MANUFACTURERS OF HARDWOOD PLYWOOD STOCK PANELS

SPECIES: R-Rotary, H-Half Round, P-Plain Sliced, Q-Quarter Sliced, I-Rift Cut

GLUE TYPES: Exterior – Technical; Exterior – Type I; Interior – Type II; NAF – No Added Formaldehyde; ULEF – Ultra-Low-Emitting Formaldehyde; NAUF – No Added Urea Formaldehyde; Phenolic – Phenol Formaldehyde; PVA – Polyvinyl Acetate

CAPITAL TESTING CERTIFICATIONS: EPA TSCA Title VI; CARB; ANSI/HPVA HP-1

	SIZES AVAILABLE	THICKNESS AVAILABLE	GLUE TYPES/ CAPITAL TESTING CERTIFICATION	CORE TYPES
		Industrial Panels	Wall Panels	
<p><u>COLUMBIA FOREST PRODUCTS</u> Old Fort, NC Plant Sales: Mike Young, Dr. of Mat'ls, Mktg, Cust. Svc 369 Columbia Carolina Road, Old Fort, NC 28762 (800) 438-6069; (828) 724-4191 E-mail: myoung@cfpwood.com Web: www.cfpwood.com Environmentally Certified Products Available: FSC® Mix (FSC-C017500)</p>	<p>48" X 96"</p>	<p>1/2" - 1-1/8"</p>	<p>CARB Type I Type II NAF TSCA Title VI</p>	<p>Calibrated Platforms Combination Veneer</p>

SPECIES MANUFACTURED: Alder-P, Anigre-P, Ash-P, Aspen-R, Bamboo-P, Basswood-R, American Beech-R, P, European Beech-P, Birch-R, P, Butternut-P, Red, Clear, Aromatic Eastern, Western Red Cedar-P, Knotty Cedar-P, Cherry-P, Cypress-P, Grey Elm-P, American Red Elm-P, Engineered Veneer Obeche-P, Douglas Fir-P, Red Gum-P, Grandis-P, Red-P, Hemlock-P, Hickory-P, Holly-P, Ipe-P, Jatoba-P, Larch-P, Khaya-P, Maple-R,P, Red Maple-R, Red Oak-R, P, White Oak-P, Eastern/Western Clear, Knotty & Yellow Pine-P, Poplar-R,P, Sapele-P, American Sycamore-P, Tineo-P, Walnut-P, Wenge-P, Other Species-Inquire-R,P,Q,I

FINISH TYPES: UV Wood™ Clear in flat, satin gloss levels, SEFA-compliant LabCoat™, UV "fill and seal" only [trans shipped from Chatham, VA]

SPECIALTY ITEMS: PureBond® NAF MPX® featuring Meinan® peel x-bands; CAN/AM™ Value Panel; Classic Core®, Classic Lam® combi core; 8' x 4' counterfront; Europly™ multiply core; industrial blanks; Radius® bending; SM&N sets

<p><u>COLUMBIA FOREST PRODUCTS</u> St, Casimir, QC, Canada Plant Sales: Mike Young, Dr. of Mat'ls, Mktg, Cust. Svc 420 Route Guibault St. Casimir, QC Canada G0A 3L0 (888) 664-1964; (450) 437-1964 E-mail: myoung@cfpwood.com Web: www.cfpwood.com Environmentally Certified Products Available: FSC® MIX (FSC-C017500)</p>	<p>60" X 108" 60" X 120" 48" X 120" 48" X 108" 48" X 96" 48" X 84" 31" X 96" 31" X 108" 31" X 120" 29" X 96" 29" X 108" 29" X 120"</p>	<p>1/8" - 1-5/8"</p>	<p>CARB Type I Type II NAF TSCA Title VI</p>	<p>Calibrated Platforms Combination MDF Particleboard Veneer</p>
---	--	--------------------------	--	--

SPECIES MANUFACTURED: Alder-P, Anigre-P, Ash-P, Aspen-R, Bamboo-P, Basswood-R, American Beech-R, P, European Beech-P, Birch-R, P, Butternut-P, Red, Clear, Aromatic Eastern, Western Red Cedar-P, Knotty Cedar-P, Cherry-P, Cypress-P, Grey Elm-P, American Red Elm-P, Engineered Veneer Obeche-P, Douglas Fir-P, Red Gum-P, Grandis-P, Red-P, Hemlock-P, Hickory-P, Holly-P, Ipe-P, Jatoba-P, Larch-P, Khaya-P, Maple-R,P, Red Maple-R, Red Oak-R, P, White Oak-P, Eastern/Western Clear, Knotty & Yellow Pine-P, Poplar-R,P, Sapele-P, American Sycamore-P, Tineo-P, Walnut-P, Wenge-P, Other Species-Inquire-R,P,Q,I

FINISH TYPES: Polypropylene Overlay [Premeer], UV Topcoat, SEFA Certified, Fumed Oak

SPECIALTY ITEMS: • PureBond® NAF MPX® featuring Meinan® peel x-bands; Melawood®, Classic Core®, 8' x 4' counterfront; Radius® bending plywood; DesignEdge® all-birch, multiply core construction

MANUFACTURERS OF HARDWOOD PLYWOOD STOCK PANELS

SPECIES: R-Rotary, H-Half Round, P-Plain Sliced, Q-Quarter Sliced, I-Rift Cut

GLUE TYPES: Exterior – Technical; Exterior – Type I; Interior – Type II; NAF – No Added Formaldehyde; ULEF – Ultra-Low-Emitting Formaldehyde; NAUF – No Added Urea Formaldehyde; Phenolic – Phenol Formaldehyde; PVA – Polyvinyl Acetate

CAPITAL TESTING CERTIFICATIONS: EPA TSCA Title VI; CARB; ANSI/HPVA HP-1

	SIZES AVAILABLE	THICKNESS AVAILABLE	GLUE TYPES/ CAPITAL TESTING CERTIFICATION	CORE TYPES
		Industrial Panels	Wall Panels	
<p><u>COMMONWEALTH PLYWOOD INC.</u> Sales: Jane Jones, Office Manager Tom Lawler, Atlantic Delia Sherwood – Inside Sales Sheldon Golub – Northeast P.O. Box 30, Whitehall, NY 12887 (518) 499-0099; Fax: (518) 499-0187 (800) 643-9475 E-mail: jjones@cpwhitehall.com Environmentally Certified Products Available: FSC</p>	<p>48 1/2" X 96 1/2"</p>	<p>1/4" 1/2" 5/8" 3/4" 1"</p>	<p>CARB II Type II NAF TSCA Title VI</p>	<p>Veneer</p>
<p><u>SPECIES MANUFACTURED:</u> Exotics-R,P,Q, White Ash-P, Basswood-R, Beech-P, Birch-R, Cedar-P, Aromatic Cedar-P, American Cherry-P, Fir (vertical grain)-P, Hickory-P, Idaho White Pine-P, Khaya-P, Maple-R,P,Q, Red Oak-R,P,Q,I, Sycamore-P, White Oak-P,Q,I, Clear & Knotty Pine-P, Sapele-P, Walnut-P, Any Species on Request-R,P,Q <u>SPECIALTY ITEMS:</u> Finished Stock Panels</p>				
<p><u>DARLINGTON VENEER CO., INC.</u> Sales: Rich Smothers P.O. Box 1087, Darlington, SC 29540 (843) 393-3861; Fax: (843) 393-4441 E-mail: rsmothers@darlingtonveneer.com Web: www.darlingtonveneer.com Environmentally Certified Products Available: FSC, Other</p>	<p>60" X 96" 48" X 144" 48" X 120" 48" X 96" 48" X 84" 48" X 72"</p>	<p>5/32" - 1-1/4"</p>	<p>ULEF Type I Type II NAF TSCA Title VI</p>	<p>Permawood Permacore I & II Calibrated Platforms Combination MDF Particleboard Veneer</p>
<p><u>SPECIES MANUFACTURED:</u> Exotics-R,H,P,Q,I, Red Alder-P, Anigre-P,Q, Ash-R,H,P,Q, Basswood-P, Beech-P,Q, Birch-R,P,Q, Butternut-P, Cedar-P, Aromatic Cedar-P, American Cherry-R,H,P,Q, Elm-P, Fir-Vertical Grain-P,Q, Hickory-R,H,P, Idaho White Pine-P, Khaya-R,H,P,Q, Honduras Mahogany-H,P,Q, Maple-R,H,P,Q,I, Red & White Oak-R,H,P,Q,I, Pecan-R,H,P, Knotty Pine-P, Poplar-R,H,P, Sapele-H,P,Q, Sycamore-P,Q, Walnut-H,P,Q, Any Species on Request-R,H,P,Q,I <u>SPECIALTY ITEMS:</u> Bending Panels, Fire Retardant Class A, Counter Fronts, Center Matched Panels, Sequenced Sets, Engineered Veneer</p>				
<p><u>GL VENEER CO., INC.</u> Sales: Jeffrey Levin 2224 E. Slauson Ave. Huntington Park, CA 90255 (323) 582-5203; Fax: (323) 582-9681 E-mail: sales@glveneer.com Web: www.glveneer.com</p>	<p>All sizes available</p>	<p>All thicknesses available</p>	<p>Exterior Technical Type I Interior Type II TSCA Title VI</p>	<p>All cores available</p>
<p><u>SPECIES MANUFACTURED:</u> Over 200 species of domestics and exotics <u>SPECIALTY ITEMS:</u> Live Edge Slabs, Logs, Veneer Faces, Sketch Faces, Exotic Veneer, Blueprint Matched Panels, Architectural Panels, Fire Rated Products, Oversize Plywood, Cut-To-Size Plywood, Custom Plywood, High Pressure Laminates</p>				

STOCK PANELS

MANUFACTURERS OF HARDWOOD PLYWOOD STOCK PANELS

SPECIES: R-Rotary, H-Half Round, P-Plain Sliced, Q-Quarter Sliced, I-Rift Cut

GLUE TYPES: Exterior – Technical; Exterior – Type I; Interior – Type II; NAF – No Added Formaldehyde; ULEF – Ultra-Low-Emitting Formaldehyde; NAUF – No Added Urea Formaldehyde; Phenolic – Phenol Formaldehyde; PVA – Polyvinyl Acetate

CAPITAL TESTING CERTIFICATIONS: EPA TSCA Title VI; CARB; ANSI/HPVA HP-1

	SIZES AVAILABLE	THICKNESS AVAILABLE	GLUE TYPES/ CAPITAL TESTING CERTIFICATION	CORE TYPES
		Industrial Panels	Wall Panels	
<p><u>HUSKY PLYWOOD</u> (Division of Commonwealth Plywood Inc.) Sales: Christian Noël, V.P., Plywood 15 Boulevard Labelle Ste-Therese, QC, Canada J7E 4H9 (450) 435-6511; Fax: (450) 435-6295 (866) 414-8759 E-mail: cnoel@commonwealthplywood.com Web: www.huskyplywood.com Environmentally Certified Products Available: FSC, Other</p>	<p>48" X 120" 48" X 108" 48" X 96" 48" X 84" 48" X 72" 36" X 96"</p>	<p>1/8" - 2"</p>	<p>Type I Type II NAF TSCA Title VI</p>	<p>Calibrated Platforms Combination Lumber MDF Particleboard Veneer All Maple</p>

SPECIES MANUFACTURED: Exotics-R,H,P,Q,I, Red Alder-P, Anigre-P,Q, Ash-R,P,Q,I, Beech-P, Birch-R,P, Butternut-P, Cedar-P, Aromatic Cedar-P, American Cherry-P,Q,I, Fir-Vertical Grain-P, Hickory-P, Idaho White Pine-P, Khaya-P, Knotty Pine-P, Honduras Mahogany-P, Maple-R,P,Q,I, Red & White Oak-R,P,Q,I, Pecan-P, Poplar-P, Sapele-P,Q, Sycamore-P,Q, Walnut-P,Q, Any Species on Request-R,P,Q,I

SPECIALTY ITEMS: Banded, Finished Stock Panels, Marine Panels, Veneer - Reconstituted – Flame Spread Rating C, Flex Core

<p><u>LAMINATE TECHNOLOGIES, INC</u> 161 Maule Road, Tiffin, OH 44883 (419) 448-0812; Fax: (419) 448-0811 Web: www.Lamtech.net</p>	<p>48" X 96" 60" X 72" 60" X 96" 60" X 120"</p>	<p>1/4" - 1-1/2"</p>	<p>PVA</p>	<p>MDF Particleboard Veneer Veneer Core MDF Skins</p>
--	---	--------------------------	------------	---

LIGNIN HOLDINGS, LLC
18071 Mt. Washington, Unit B, Fountain Valley, CA 92708
(949) 929-4986

<p><u>MANTHEI WOOD PRODUCTS</u> Sales: Jon DeMotte 3996 US 31 South, Petoskey, MI 49770 (231) 347-7040; Fax: (231) 347-3750</p>	<p>48" X 120" 48" X 96" 48" X 84" 48" X 72" 60" X 96" 60" X 120"</p>	<p>1/8"- 1-1/2"</p>	<p>Type I Type II NAF Exterior TSCA Title VI</p>	<p>Calibrated Platforms Combination MDF Particleboard Veneer Multi-Ply</p>
--	--	-------------------------	--	--

E-mail: plywoodsales@mantheiwoodproducts.com
Web: www.mantheiwoodproducts.com
Environmentally Certified Products Available: FSC, CARB Certified, TSCA Title VI

SPECIES MANUFACTURED: Red Alder-P, Anigre-P,Q, Ash-R,P,Q, Bamboo-P,Q, Basswood-R, Beech-R,P,Q, Birch-R,P,Q, Butternut-P, Cedar-P, Aromatic Cedar-P, Cherry-P,Q, Fir-P,Q, Hickory-R,P, Idaho White Pine-P, Jatoba-P,Q, Khaya-P,Q, Knotty Pine-P, Maple-R,P,Q, Pecan-R,P, Red and White Oak-R,P,Q,I, Okuome-R, Sapele-P,Q, Sycamore-P,Q, Walnut-P,Q, Teak-P,Q, Zebrawood-Q, Other imported and domestic species available upon request

SPECIALTY ITEMS: Cut-To-Size, Finished Stock Panels, Flat & Rotary Die Boards, Kitchen Cabinet Components, Lazer Panels, Veneer-Reconstituted - Flame Spread Rating A, B C, Door Skins

MANUFACTURERS OF HARDWOOD PLYWOOD STOCK PANELS

SPECIES: R-Rotary, H-Half Round, P-Plain Sliced, Q-Quarter Sliced, I-Rift Cut

GLUE TYPES: Exterior – Technical; Exterior – Type I; Interior – Type II; NAF – No Added Formaldehyde; ULEF – Ultra-Low-Emitting Formaldehyde; NAUF – No Added Urea Formaldehyde; Phenolic – Phenol Formaldehyde; PVA – Polyvinyl Acetate

CAPITAL TESTING CERTIFICATIONS: EPA TSCA Title VI; CARB; ANSI/HPVA HP-1

	SIZES AVAILABLE	THICKNESS AVAILABLE	GLUE TYPES/ CAPITAL TESTING CERTIFICATION	CORE TYPES
		Industrial Panels	Wall Panels	
<u>MURPHY COMPANY</u> Hardwood Plywood Division Sales: John Murphy Jr., Executive VP 2350 Prairie Road, Eugene, OR 97402 (541) 461-4545; Fax: (541) 461-4547 E-mail: sales@murphyplywood.com Web: www.murphyplywood.com Environmentally Certified Products Available: FSC, CARB Exempt, ULEF	48" X 96" 48" X 84" 48" X 72" + 1/2" oversized	5/32" - 1-1/4"	Type I Type II NAF NAUF Phenolic PVA TSCA Title VI ANSI/HPVA HP-1	Baltic Birch Calibrated Platforms Combination MDF Particleboard Veneer

SPECIES MANUFACTURED: Alder-P, Ash-R,P,Q, Beech-R,P,Q, Birch-R,P, Cedar-P, American Cherry-R,P,Q, Hickory-P, Knotty Pine-P, Maple-R,P,Q, Red & White Oak-R,P,Q,I, Pecan-P, Poplar-R,P, Walnut-P, Q, Other Domestic Species-R,P,Q, Imported Species-R,P,Q

SPECIALTY ITEMS: Aromatic Cedar Paneling, Edge-Banded, Cut-To-Size, Cabinet Door Inserts, Drawer Sides/Backs/Bottoms Bull-Nosed/Grooved, Finished Stock Panels, Furniture Panels, Kitchen Cabinet Components, Sequence Matched and Numbered, Custom Order Panels

<u>ROCKSHIELD ENGINEERED WOOD PRODUCTS</u> Sales: Terry Evans, V.P. 4 Bolsvert Crescent, Cochrane, ON POL 1C0 Canada (705) 272-7610; Fax: (705) 272-3509 Email: terry.evans@rockshieldewp.com Web: www.RockshieldEWP.com Environmentally Certified Products Available: FSC	48" X 96" 48-1/2" X 96-1/2"	1/4" - 1-1/2"	Phenolic PVA TSCA Title VI	Combination MDF Particleboard Veneer
--	--------------------------------	------------------	----------------------------------	---

FINISH TYPES: UV Topcoat

<u>ROSEBURG FOREST PRODUCTS CO.</u> Sales: John Biedermann 3660 Gateway Street Springfield, OR 97477 (678) 474-1257 E-mail: JohnB@rfpco.com Web: www.Roseburg.com Environmentally Certified Products Available: FSC, Greenguard, CARB ULEF Exempt	48" X 120" 48" X 96" Inquire	5.2mm - 1-1/4" Inquire	Type II TSCA Title VI* (*other TPC)	Calibrated Platforms Combination MDF Particleboard Veneer
--	------------------------------------	------------------------------	---	---

SPECIES MANUFACTURED: Red Alder-P, Ash-R,P,Q, Bamboo-P,Q, Basswood-R, Beech-P,Q, Birch-R,P,Q, Butternut-P, Cedar-P, Aromatic Cedar-P, Cherry-P,Q, Fir-P,Q, Hickory-P, Idaho White Pine-P, Knotty Pine-P, Maple-R,P,Q, Red and White Oak-R,P,Q,I, Sycamore-P,Q, Walnut-P,Q, Other imported and domestic species available upon request

FINISH TYPES: UV Topcoat, Catalyzed Water Based Paint

WALL PANELS: Architectural – Flame Spread Rating "C"

SPECIALTY ITEMS: RediBead Bead Board, RediPly-Hardwood Veneer Face/TFL Laminate Back, Sequence Matched and Numbered

MANUFACTURERS OF HARDWOOD PLYWOOD STOCK PANELS

SPECIES: R-Rotary, H-Half Round, P-Plain Sliced, Q-Quarter Sliced, I-Rift Cut

GLUE TYPES: Exterior – Technical; Exterior – Type I; Interior – Type II; NAF – No Added Formaldehyde; ULEF – Ultra-Low-Emitting Formaldehyde; NAUF – No Added Urea Formaldehyde; Phenolic – Phenol Formaldehyde; PVA – Polyvinyl Acetate

CAPITAL TESTING CERTIFICATIONS: EPA TSCA Title VI; CARB; ANSI/HPVA HP-1

	SIZES AVAILABLE	THICKNESS AVAILABLE	GLUE TYPES/ CAPITAL TESTING CERTIFICATION	CORE TYPES	
		Industrial Panels	Wall Panels		
<p><u>STATES INDUSTRIES LLC</u> Sales: Dan Hitchcock P.O. Box 41150, Eugene, OR 97404 (541) 688-7871; Fax: (541) 689-8051 (800) 626-1981 E-mail: dhitchcock@statesind.com Web: www.statesind.com Environmentally Certified Products Available: FSC, SFI</p>	48" X 120" 48" X 96" 48" X 90" 48" X 84" 48" X 72"	1/8" - 1-1/2"	Type II NAF TSCA Title VI ANSI/HPVA HP-1	Calibrated Platforms Combination MDF Particleboard Veneer	
<p><u>SPECIES MANUFACTURED:</u> Red Alder-R,P, Anigre-P,Q, Ash-R,P,Q, Beech-R,P,Q, Birch-R,P,Q, Butternut-P, Cedar-P, Aromatic Cedar-P, American Cherry-R,P,Q, Fir-Vertical Grain-P, Hickory-R,P, Idaho White Pine-P, Khaya-P,Q, Knotty Pine-P, Maple-R,P,Q, Red & White Oak-R,P,Q,I, Pecan-R,P, Poplar-R,P, Sapele-P,Q, Sycamore-Q, Walnut-P,Q <u>SPECIALTY ITEMS:</u> Aromatic Cedar Paneling, Banded, Cut-To-Size, Drawer Sides/Backs Nosed/Grooved, Finished Stock Panels, Kitchen Cabinet Components, Machined Parts (Shaped), Veneer - Reconstituted - Flame Spread Rating A, B, C, 150 Canada</p>	<p><u>TIMBER PRODUCTS COMPANY</u> Sales: Davis Edwards, Sales Manager - East 2701 S. Harper Rd., Corinth, MS 38834 (901) 624-8201; Fax: (901) 757-9482 (800) 477-6195 E-mail: dedwards@timberproducts.com Web: www.timberproducts.com Environmentally Certified Products Available: FSC</p>	48" X 96" 48" X 84" 48" X 72" 48" X 120"	5.2mm - 1-1/4"	Type II ULEF CARB NAF TSCA Title VI	MDF Particleboard Veneer Calibrated Platforms Combination OSB
<p><u>SPECIES MANUFACTURED:</u> Exotics-P,Q, Red Alder-P, Anigre-P,Q, Ash-R,P,Q, Beech-P,Q, Birch-R,P, Cedar-P, Aromatic Cedar-P, American Cherry-R,P,Q, Fir-Vertical Grain-P, Hickory-R,P, Idaho White Pine-P, Khaya-P,Q, Knotty Pine-P, Maple-R,P,Q, Red & White Oak-R,P,Q,I, Poplar-P, Sapele-P,Q, Walnut-P <u>SPECIALTY ITEMS:</u> Aromatic Cedar Paneling, Finished Stock Panels, Veneer – Reconstituted, Beaded, Cross Grain</p>	<p><u>TIMBER PRODUCTS COMPANY</u> Sales: Alicia Powell, Sales Manager – West 25 E McAndrews Rd., Medford, OR 97501 Cell: (706) 513-4016; Office: (541) 744-4269 E-mail: apowell@timberproducts.com Web: www.timberproducts.com Environmentally Certified Products Available: FSC</p>	48" X 96" 48" X 84" 48" X 72" 48" X 120"	5.2mm - 1-1/4"	Type I Type II CARB NAF Phenolic PVA TSCA Title VI	MDF Particleboard Veneer Calibrated Platforms
<p><u>SPECIES MANUFACTURED:</u> Exotics-P,Q, Red Alder-P, Anigre-P,Q, Ash-R,P,Q, Beech-P,Q, Birch-R,P, Cedar-P, Aromatic Cedar-P, American Cherry-R,P,Q, Fir-Vertical Grain-P, Hickory-R,P, Idaho White Pine-P, Khaya-P,Q, Knotty Pine-P, Maple-R,P,Q, Red & White Oak-R,P,Q,I, Poplar-P, Sapele-P,Q, Walnut-P <u>SPECIALTY ITEMS:</u> Aromatic Cedar Paneling, Finished Stock Panels, Veneer – Reconstituted, Beaded, Cross Grain</p>					

STOCK PANELS

MANUFACTURERS OF HARDWOOD PLYWOOD STOCK PANELS

SPECIES: R-Rotary, H-Half Round, P-Plain Sliced, Q-Quarter Sliced, I-Rift Cut

GLUE TYPES: Exterior – Technical; Exterior – Type I; Interior – Type II; NAF – No Added Formaldehyde; ULEF – Ultra-Low-Emitting Formaldehyde; NAUF – No Added Urea Formaldehyde; Phenolic – Phenol Formaldehyde; PVA – Polyvinyl Acetate

CAPITAL TESTING CERTIFICATIONS: EPA TSCA Title VI; CARB, ANSI/HPVA HP-1

	SIZES AVAILABLE	THICKNESS AVAILABLE	GLUE TYPES/ CAPITAL TESTING CERTIFICATION	CORE TYPES
		Industrial Panels	Wall Panels	
<u>THE WOOD GALLERY, INC.</u>	Up to 77" X 160"	1/16" - 6"	Type I Type II CARB TSCA Title VI	Lumber MDF Particleboard Veneer
Sales: Barrett Lee				
10724 Goodnight Lane, Dallas, TX 75220-2409				
(972) 869-9161; Fax: (972) 869-0449				
E-mail: barrett@woodgallery.biz				
Web: www.woodgallery.biz				
Environmentally Certified Products Available: FSC, NAUF				

SPECIES MANUFACTURED: Exotics R,H,Q, Anigre-P,Q, Ash-P,Q, Beech-P,Q, Birch-R,P,Q, Burls-R, American Cherry-P,Q, Fir-Vertical Grain-Q, Hickory-P, Khaya-P,Q, Knotty Pine-P, Honduras Mahogany-P,Q, Maple-H,P,Q, Red & White Oak-P,Q,I, Pecan-P, Sapele-P,Q, Sycamore-P,Q, Walnut-P,Q, Any Species on Request-P,Q

SPECIALTY ITEMS: Aircraft Applications, Cut-To-Size – Flame Spread Rating A



ROTARY HARDWOOD VENEERS

- The grain pattern varies from log to log, making each piece its own natural unique piece of art.
- Wide variety of species available.
- Maximizes the usable veneer taken from each tree.
- Ability to select a specific flitch or “look.”
- By using hardwood veneer, you honor centuries of craftsman heritage and contribute to an environmentally responsible use of a natural resource.

For more information, read: *Facts About Decorative Veneers* listed in the Table of Contents.



Photo courtesy of Darlington Veneer Company

**ROTARY HARDWOOD VENEERS
MANUFACTURERS (M) AND SALES COMPANIES (S)**

	MINIMUM THICKNESS	MAXIMUM THICKNESS	MINIMUM LENGTH	MAXIMUM LENGTH	TYPE
--	----------------------	----------------------	-------------------	-------------------	------

<p><u>ATLANTIC VENEER CORPORATION (M)</u> Division of Moehring-Group Sales: Flint Harding 611 Verdun St., Newport, NC 28570 (252) 728-3169; Fax: (252) 728-4203 E-mail: fharding@moehring-group.com Web: www.moehring-group.com Environmentally Certified Products Available: FSC, SFI, Other</p>	<p>1/64" 0.5mm</p>	<p>1/16" 1.6mm</p>	<p>--</p>	<p>216" 18' 5486mm</p>	<p>Rotary Half Round</p>
--	------------------------	------------------------	-----------	--------------------------------	------------------------------

SPECIES AVAILABLE: Ash, Aspen, Beech, Birch
SPECIALTY ITEMS: Veneer - Edge Band, Veneer for Export, Veneer - Stock Panel/Door Faces

<p><u>BIRCHWOOD MANUFACTURING CO. (M)</u> A Besse Forest Products Group Company Greg Besse, President; Wayne Brock, V.P. Operations P.O. Box 352, Gladstone, MI 49837 (906) 428-3113; Fax: (906) 428-1525 Mill: Rice Lake, WI E-mail: besse-sales@bessegroup.com Web: www.bessegroup.com Environmentally Certified Products Available: FSC, Other</p>	<p>1/50" 0.5mm</p>	<p>3/16" 4.8mm</p>	<p>10" 254mm</p>	<p>104" 2640mm</p>	<p>Rotary</p>
--	------------------------	------------------------	----------------------	------------------------	---------------

SPECIES AVAILABLE: Red Alder, Ash, Aspen, Basswood, Birch, Cherry, Fir/Hemlock, Hickory/Pecan, Bird's-Eye, Curly/Fiddleback, Hard & Soft Maple, Red & White Oak, White & Yellow Pine, Poplar, Walnut, Other North American Species
SPECIALTY ITEMS: Veneer-Cut-To-Size, Veneer for Export, Veneer-Stock Panel/Door Faces

<p><u>CAHABA VENEER & PLYWOOD, INC (M)</u> Sales: Pete Browder, President P.O. Box 98, 324 Mill St., Centreville, AL 35042 (205) 926-9797; Fax: (205) 926-5496 E-mail: Pete@cahabaveneer.com Web: www.cahabaveneer.com</p>	<p>1/24" 1mm</p>	<p>3/16" 4.8mm</p>	<p>--</p>	<p>100"</p>	<p>Rotary</p>
---	----------------------	------------------------	-----------	-------------	---------------

SPECIES AVAILABLE: Southern – Ash, Cypress, Gum, Hickory, Red and White Oak, Poplar, Sycamore, Tupelo Gum; Northern – Hard Maple
SPECIALTY ITEMS: Cut-To-Size Veneer and Plywood, Skateboard Veneers

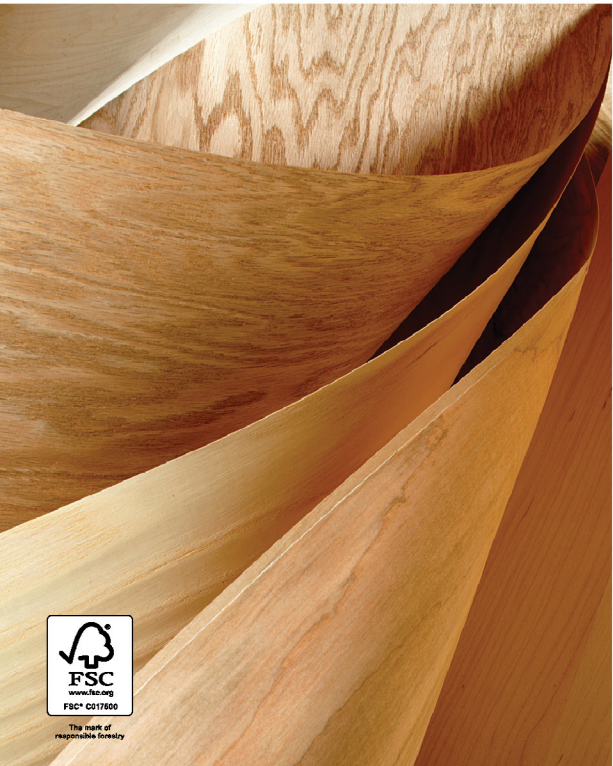
<p><u>CLARKE VENEERS & PLYWOOD (S)</u> Sales: Stuart Clarke Bronson Newburger P.O. Box 4876, Jackson, MS 39296-4876 (601) 366-0331; Fax: (601) 366-0334 E-mail: info@clarkeveneers.com Web: www.clarkeveneers.com Environmentally Certified Products Available: FSC, Other</p>	<p>1/85" 0.3mm</p>	<p>1/6" 4.1mm</p>	<p>--</p>	<p>123" 3125mm</p>	<p>Rotary</p>
---	------------------------	-----------------------	-----------	------------------------	---------------

SPECIES AVAILABLE: Aspen, Birch, Eucalyptus, Fir, Fuma, Hemlock, Maple, Okoume, Pine, Poplar, Red Oak
SPECIALTY ITEMS: Face and Back Veneers, Core Veneers, Veneer Core Platforms, Combi Ply Platforms

ROTARY HARDWOOD VENEERS MANUFACTURERS (M) AND SALES COMPANIES (S)

	MINIMUM THICKNESS	MAXIMUM THICKNESS	MINIMUM LENGTH	MAXIMUM LENGTH	TYPE
<u>COLUMBIA FOREST PRODUCTS (M)</u>					
Hardwood Veneer Division	1/64"	1/17"	16"	123"	Rotary
Sales: Rocky Boucher, Director of Sales Tanya Lamoureux, No. American Veneer Sales Jeremy Roberge, Inside Sales Adam Thurston, Sales Coordinator	0.4mm	1.5mm	406mm	3124mm	
324 Bluff Rd., Newport, VT 05855 (802) 334-3600; Fax: (802) 334-5149 (800) 231-4148 E-mail: rboucher@cfpwood.com Web: www.columbiaforestproducts.com Environmentally Certified Products Available: FSC					

SPECIES AVAILABLE: Ash, Basswood, Birch, Hard & Soft Maple, Red Oak, Tulip Poplar
SPECIALTY ITEMS: Custom Splicing, Custom Lumber Slicing, Log Run, Tulip Poplar, Aspen, Fir Platforms from multiple locations in 7/16", 11/16" with calibrated availability in 8', 9' and 10' lengths, Veneer-Cut-To-Size, Veneer for Export, Veneer-Stock Panel/Door Faces



Together, we manufacture success.

- North American rotary, sliced and cut-to-size decorative veneers in alder, ash, birch, maple, poplar and red oak, available with chain-of-custody assurance.
- Book matched, slip matched, planked appearance veneer panels as well as flitch stock and furniture grade sorts.
- TSCA Title VI compliant Menian® peel platforms, including Classic Lam® combination core panels, aspen industrial panels and framestock featuring PureBond® soy-based assembly technology.

Contact our veneer and platform sales team today:

1-800-231-4148 | veneerinfo@cfpwood.com

**ROTARY HARDWOOD VENEERS
MANUFACTURERS (M) AND SALES COMPANIES (S)**

	MINIMUM THICKNESS	MAXIMUM THICKNESS	MINIMUM LENGTH	MAXIMUM LENGTH	TYPE
<u>COMMONWEALTH PLYWOOD CO., LTD. (M)</u>	1/50"	1/16"	14"	123"	Rotary
Veneer Division	0.5mm	0.59mm	356mm	3124mm	
Sales: Daniel Pacheco, Jason Miller Norman Wulf 15 Labelle Boulevard, P.O. Box 90 Ste-Therese, QC, Canada J7E 4H9 (450) 435-6541; Fax: (450) 435-2895 E-mail: sales@commonwealthplywood.com Web: www.commonwealthplywood.com Environmentally Certified Products Available: Other					

SPECIES AVAILABLE: Basswood, Birch, Hard Maple, Poplar, Red Oak
SPECIALTY ITEMS: Veneer-Cut-To-Size, Veneer for Export, Veneer-Stock Panel/Door Faces

<u>THE FREEMAN CORPORATION (M)</u>	1/21"	1/6"	--	63"	Rotary
Sales: Andrew Falk	1.2mm	4.2mm		1600mm	
P.O. Box 96, Winchester, KY 40392-0096 (859) 744-4311; Fax: (859) 744-4363 E-mail: sales@freemancorp.com Web: www.freemancorp.com Environmentally Certified Products Available: FSC					

SPECIES AVAILABLE: Red Alder, Beech, Birch, Cherry, Hickory/Pecan, Hard & Soft Maple, Red & White Oak, Poplar, Sycamore, Walnut, Other North American Species
SPECIALTY ITEMS: Veneer-Cut-To-Size, Veneer-Edge Band, Veneer for Export

<u>GOODMAN VENEER AND LUMBER CO. (M/S)</u>	1/42"	3/16"	50"	104"	Rotary
A Besse Forest Products Group Company	0.6mm	4.8mm	1270mm	2640mm	
Sales: Don Tomaszewski; Wayne Brock, V.P. Operations P.O. Box 352, Gladstone, MI 49837 (906) 428-3113; Fax: (906) 428-1525 E-mail: besse-sales@bessegroup.com Web: www.bessegroup.com Environmentally Certified Products Available: FSC, Other					

SPECIES AVAILABLE: Red Alder, Ash, Aspen, Basswood, Birch, Cherry, Hickory/Pecan, Bird's-Eye, Curly/Fiddleback, Hard & Soft Maple, Red & White Oak, Walnut, Other North American Species
SPECIALTY ITEMS: Veneer-Cut-To-Size, Veneer for Export, Veneer-Stock Panel/Door Faces, Platforms, Plywood

**ROTARY HARDWOOD VENEERS
MANUFACTURERS (M) AND SALES COMPANIES (S)**

	MINIMUM THICKNESS	MAXIMUM THICKNESS	MINIMUM LENGTH	MAXIMUM LENGTH	TYPE
<u>GREAT LAKES VENEER (M)</u>	1/50"	1/5"	10"	104"	Rotary
Sales: Michael Burkart, Business & Product Dev. Dir.	0.15mm	5.1mm	254mm	2550mm	Sliced
Nick Rogers, Business & Product Dev. Mgr.					
P.O. Box 476, Marion, WI 54950-0476					
(715) 754-2501; Fax: (715) 754-2582					
E-mail: mike.burkart@greatlakesveneer.com ; nrogers@greatlakesveneer.com					
Web: www.greatlakesveneer.com					
Environmentally Certified Products Available: FSC					

SPECIES AVAILABLE: Ash, Aspen, Basswood, Beech, Birch, Cherry, Cottonwood, Elm, Black & Sweet Gum, Hickory/Pecan, Bird's-Eye, Curly/Fiddleback, Hard & Soft Maple, Red & White Oak, White & Yellow Pine, Poplar, Sycamore, Walnut, Other North American Species
SPECIALTY ITEMS: Custom Splicing, Veneer-Cut-To-Size, Veneer for Export, Veneer-Stock Panel/Door Faces

<u>MANTHEI WOOD PRODUCTS (M)</u>	1/82"	1/12"	12"	104"	Rotary
Sales: Matt Smith	0.3mm	2.1mm	305mm	2642mm	
3996 US 31 South					
Petoskey, MI 49770					
(231) 347-7040; Fax: (231) 347-1369					
E-mail: sales@mantheiwoodproducts.com					
Web: www.mantheiwoodproducts.com					

SPECIES AVAILABLE: Aspen, Basswood, Beech, Birch, Cherry, Hickory/Pecan, Bird's-Eye, Curly/Fiddleback, Hard & Soft Maple, Red & White Oak, Poplar
SPECIALTY ITEMS: Veneer-Cut-To-Size, Veneer for Export, Veneer-Stock Panel/Door Faces

<u>MCCATHAY TIMBER, INC. (S)</u>	1/85"	1/6"	2"	126"	Rotary
Sales: Dan Roach, President				10.5'	Half Round
Ken Roach, Vice-President	0.3mm	4.2mm	50mm	3200mm	
1529 West Armitage Avenue, #200					
Chicago, IL 60642-1258					
(773) 227-1171; Fax: (773) 227-6767					
(800) 6 VENEER					
E-mail: info@mccathaytimber.com					
Web: www.mccathaytimber.com					
Environmentally Certified Products Available: FSC, SFI					

SPECIES AVAILABLE: Exotics, Red Alder, Ash, Aspen, Basswood, Beech, Birch, Cherry, Cottonwood, Elm, Fir/Hemlock, Black & Sweet Gum, Hickory/Pecan, Western, Quilted, Hard & Soft Maple, Red & White Oak, White & Yellow Pine, Poplar, Sycamore, Tupelo, Walnut, Other North American Species
SPECIALTY ITEMS: Clipped & Bundled, Custom Splicing to Door Faces and Panel Dimensions, Plywood, Platforms, Butcher Block, Edge-Glued Lumber, Veneer-Cut-To-Size, Veneer-Edge Band, Veneer for Export

**ROTARY HARDWOOD VENEERS
MANUFACTURERS (M) AND SALES COMPANIES (S)**

	MINIMUM THICKNESS	MAXIMUM THICKNESS	MINIMUM LENGTH	MAXIMUM LENGTH	TYPE
--	----------------------	----------------------	-------------------	-------------------	------

<p><u>NORTHERN MICHIGAN VENEERS, INC. (M/S)</u> A Besse Forest Products Group Company Sales: Don Tomaszewski; Greg Besse, Pres. P.O. Box 352, Gladstone, MI 49837 (906) 428-3113; Fax: (906) 428-1525 Mill: Gladstone, MI E-mail: besse-sales@bessegroup.com Web: www.bessegroup.com Environmentally Certified Products Available: FSC, Other</p>	<p>1/50" 0.5mm</p>	<p>3/16" 4.8mm</p>	<p>10" 254mm</p>	<p>123" 3124mm</p>	<p>Rotary</p>
--	------------------------	------------------------	----------------------	------------------------	---------------

SPECIES AVAILABLE: Exotics, Red Alder, Ash, Aspen, Basswood, Birch, Cherry, Fir/Hemlock, Hickory/Pecan, Bird's-Eye, Curly/Fiddleback, Hard & Soft Maple, Red & White Oak, White & Yellow Pine, Poplar, Walnut, Other North American Species
SPECIALTY ITEMS: Custom Splicing, Platforms, Veneer-Cut-To-Size, Veneer for Export, Veneer-Stock Panel/Door Faces

<p><u>THE PENROD COMPANY (M/S)</u> Sales: Forest Products Sales 272 Bendix Rd., Suite 550 Virginia Beach, VA 23452 (757) 498-0186; Fax: (757) 498-1075 E-mail: ForestProductsSales@ThePenrodCompany.com Web: www.thepenrodcompany.com</p>	<p>1/85" 0.3mm</p>	<p>1/4" 6.3mm</p>	<p>10" 254mm</p>	<p>145" 3685mm</p>	<p>Rotary</p>
--	------------------------	-----------------------	----------------------	------------------------	---------------

SPECIES AVAILABLE: A variety of domestic and international fine hardwood and decorative softwood species.
SPECIALTY ITEMS: A variety of specialty veneer and panel products for various manufacturing applications

<p><u>TIMBER PRODUCTS COMPANY (M)</u> Sales: Terry Ostrander, Veneer Sales Mgr. P.O. Box 378, Munising, MI 49862-0378 (906) 452-6221; Fax: (906) 452-6348 E-mail: tostrander@timberproducts.com Web: www.timberproducts.com Environmentally Certified Products Available: FSC</p>	<p>1/64" 0.4mm</p>	<p>1/28" 0.91mm</p>	<p>34" 864mm</p>	<p>99" 2515mm</p>	<p>Rotary</p>
---	------------------------	-------------------------	----------------------	-----------------------	---------------

SPECIES AVAILABLE: Birch, Hard Maple, Soft Maple
SPECIALTY ITEMS: Veneer-Cut-To-Size, Veneer for Export, Veneer-Stock Panel/Door Faces

<p><u>WISCONSIN VENEER & PLYWOOD, INC. (M/S)</u> A Besse Forest Products Group Company Greg Besse, Pres; Wayne Brock, V.P. Op. P.O. Box 352, Gladstone, MI 49837 (906) 428-3113; Fax: (906) 428-1525 Mill: Mattoon, WI E-mail: besse-sales@bessegroup.com Web: www.bessegroup.com Environmentally Certified Products Available: FSC, Other</p>	<p>1/50" 0.5mm</p>	<p>3/16" 4.8mm</p>	<p>10" 254mm</p>	<p>110" 2794mm</p>	<p>Rotary</p>
---	------------------------	------------------------	----------------------	------------------------	---------------

SPECIES AVAILABLE: Red Alder, Ash, Aspen, Basswood, Birch, Cherry, Hickory/Pecan, Bird's-Eye, Curly/Fiddleback, Hard & Soft Maple, Red & White Oak, White & Yellow Pine, Poplar, Walnut, Other North American Species
SPECIALTY ITEMS: Custom Splicing, Platforms, Veneer-Cut-To-Size, Veneer for Export, Veneer-Stock Panel/Door Faces, Plywood



DECORATIVE HARDWOODS AssociationSM

DHA MISSION

The mission of the Decorative Hardwoods Association, formerly known as the Hardwood Plywood & Veneer Association, is to promote and support high quality, sustainably and legally produced decorative engineered wood products and hardwood veneer manufactured in North America.

OUR CORE VALUES

- Our unique strength is our depth and breadth of technical expertise in engineered hardwoods
- Our marketing of North American-produced engineered hardwoods drives consumer preference
- The Decorative Hardwoods Association is the single voice of our industry, advocating for a fair market and level playing field
- We actively collaborate to promote the sustainable management of forest resources and access to legally sourced timber
- Our national consensus standards for hardwood plywood, engineered wood flooring, and due diligence for sourcing legal timber are recognized and specified by producers and consumers

To become a member, advertise with us, or buy publications, contact:

703.435.2900

www.DecorativeHardwoods.org

2023 SPRING CONFERENCE & 102ND ANNUAL MEETING



DECORATIVE
HARDWOODS
AssociationSM

REGISTER ONLINE AT

www.decorativehardwoods.org/events/2023-dha-annual-meeting

WEDNESDAY, MAY 24 - FRIDAY, MAY 26, 2023

Wyndham Grand Clearwater Beach, FL



Forever Green™

BESSE

FOREST PRODUCTS GROUP



NORTH AMERICA'S

PREMIUM HARDWOOD PRODUCTS

DISTRIBUTED TO WORLD MARKETS

ROTARY VENEERS

Whole Piece and Spliced for Stock Panel, Door Faces and Cut-to-Size Veneers

Whole Piece and Spliced for Flooring, Musical Instruments, Sporting Goods, Windows, Doors, Furniture

Random Width/Unspliced

Thickness available: 1/100" through 1/6" (.250 mm through 4.25mm)

SLICED VENEERS

Spliced Stock Panel, Door Faces and Cut-to-Size Veneers

Flitch Stock

PLYWOOD

Engineered Flooring

Die Boards

Specialty Plywoods

LUMBER

Kiln-Dried Lumber

Green Lumber

Custom Drying

Custom Ripping

Industrial Lumber

Planing

Railroad Ties

SPECIES

Aspen

Basswood

Birch

Birds Eye Maple

Cherry

Curly Maple

Fir

Hard (Sugar) Maple

Hickory

Knotty Pine

Northern Red (Wheat) Oak

Soft (Red) Maple

Walnut

White Ash

White Oak



The mark of responsible forestry

GROUP HEADQUARTERS

PO Box 352 • Gladstone, MI 49837

906.428.3113 • Fax 906.428.3310

Emails: veneer@bessegroup.com • lumber@bessegroup.com

www.bessegroup.com



SLICED HARDWOOD VENEERS

- Beautiful heart structure.
- Uniformity of appearance.
- Smooth surface.
- Ability to select a specific flitch or “look.”
- Wide variety of species available.
- Sliced veneer gives a unique and sophisticated touch to your product.
- By using hardwood veneer, you honor centuries of craftsman heritage and contribute to an environmentally responsible use of a natural resource.

For more information, read: *Facts About Decorative Veneers* listed in the Table of Contents.



Photo courtesy of Danzer

**SLICED HARDWOOD VENEER
MANUFACTURERS (M) AND SALES COMPANIES (S)**

	MINIMUM THICKNESS	MAXIMUM THICKNESS	MINIMUM LENGTH	MAXIMUM LENGTH	TYPE
<u>ATLANTIC VENEER CORPORATION (M)</u>	1/64"	1/16"	36"	180"	Half Round
Division Moehring-Group			3'	15'	Plain Sliced
Sales: Flint Harding	0.5mm	1.6mm	914mm	4572mm	Rift/ Quarter Slcd.
611 Verdun St., Newport, NC 28570					
(252) 728-3169; Fax: (252) 728-4203					
E-mail: fharding@moehring-group.com					
Web: www.moehring-group.com					
Environmentally Certified Products Available: FSC, SFI, Other					

SPECIES AVAILABLE: Exotics, Red Alder, Ash, Beech, Birch, Butternut, Aromatic Cedar, Cherry, Elm, Gum, Hackberry, Hickory/Pecan, Curly/Fiddleback, Western, Quilted, Hard & Soft Maple, Red & White Oak, White/Ponderosa/Sugar & Yellow Pine, Poplar, Sycamore, Tupelo, Walnut, Other North American Woods

SPECIALTY ITEMS: Clipped & Bundled – Export, Custom Slicing, Logs for Sale, Veneer-Architectural, Veneer, Cut-To-Size, Veneer-Edge Band

<u>BIRCHLAND PLYWOOD-VENEER LTD.</u>	1/40"	1/16"	28"	150"	Rotary
P.O. Box 430, Thessalon, ON, Canada P0R 1L0	0.6mm	1.6mm	711mm	3810mm	Half Round
(705) 842-2430; Fax: (705) 842-2496					Plain Sliced
E-mail: sales@birchlandplywood.com					Rift/ Quarter Slcd.
Web: www.birchlandplywood.com					
Environmentally Certified Products Available: FSC					

SPECIES AVAILABLE: Exotics, Red Alder, Anigre, Ash, Basswood, Beech, Birch, Burls, Butternut, Cedar, Aromatic Cedar, American Cherry, Elm, Fir-Vertical Grain, Gum, Hickory, Idaho White Pine, Khaya, Knotty Pine, Honduras Mahogany, Maple, Red & White Oak, Pecan, Poplar, Sapele, Sycamore, Tupelo, Walnut, Any Species on Request

SPECIALTY ITEMS: Aromatic Cedar Paneling, Blueprint Matched Panels, Calibrated Platforms, Combination, Cut-To-Size, Door Skins, Finished Stock Panels, Lumber, MDF, Particleboard, Stock Panels, Unidirectional, Veneer - Reconstituted – Flame Spread Rating A, B, C

<u>CAHABA VENEER & PLYWOOD, INC (M)</u>	1/40"	1/8"	36"	110"	Plain Sliced
Sales: Pete Browder, President	.6mm	3.2mm	914mm	3000mm	
P.O. Box 98, 324 Mill St., Centreville, AL 35042					
(205) 926-9797; Fax: (205) 926-5496					
E-mail: Pete@cahabaveneer.com					
Web: www.cahabaveneer.com					

SPECIES AVAILABLE: Southern – Ash, Gum, Hickory, Red and White Oak

SPECIALTY ITEMS: Rustic Sliced for Flooring & Hospitality

**SLICED HARDWOOD VENEER
MANUFACTURERS (M) AND SALES COMPANIES (S)**

	MINIMUM THICKNESS	MAXIMUM THICKNESS	MINIMUM LENGTH	MAXIMUM LENGTH	TYPE
<u>COLUMBIA FOREST PRODUCTS (M)</u>					
Hardwood Veneer Division	1/50"	1/10"	16"	123"	Plain Sliced
Sales: Rocky Boucher, Director of Sales	0.5mm	2.5mm	406 mm	3124mm	
Tanya Lamoureux, No. American Veneer Sales					
Jeremy Roberge, Inside Sales					
Adam Thurston, Sales Coordinator					
606 Wilderness Drive, Mellen, WI 54546					
(802) 334-3600; Fax: (802) 334-5149					
(800) 231-4148					
E-mail: rboucher@cfpwood.com					
Web: www.columbiaforestproducts.com					
Environmentally Certified Products Available: FSC					

SPECIES AVAILABLE: Red Alder, Beech, Aromatic Cedar, Hickory, Hard Maple, Red & White Oak
SPECIALTY ITEMS: Custom Lumber (Marunaka) Slicing, Logs for Sale, Platforms, Veneer-Cut-To-Size

<u>DANZER SPECIALTY VENEER (DSV) (M/S)</u>					
Danzer Veneer Americas	1/64"	5/32"	--	155"	Half Round
Sales: Michael Nuppnau, Darlington, PA	0.35mm	4.0mm		4000mm	Plain Sliced
(724) 827-8366					
Matt Miller, Edinburgh, IN					
(812) 526-2601					
Web: www.danzer.com					
Please see our ad on inside back cover for more information.					
Certified (FSC-Mixed Credit & FSC-CW) veneer is available.					
Certified to the American National Standard for Due Diligence in Procuring/Sourcing Legal Timber (ANS LTDD) by Capital Testing					

SPECIES AVAILABLE: Exotics, Red Alder, Ash, Basswood, Beech, Birch, Butternut, Aromatic & Western Red Cedar, Cherry, Elm, Fir/Hemlock, Guanacaste, Gum, Hackberry, Hickory/Pecan, Madrona, Bird's-Eye, Curly/Fiddleback, Western, Quilted, Hard & Soft Maple, Red & White Oak, White/Ponderosa/Sugar & Yellow Pine, Poplar, Sapelli, Sycamore, Tupelo, Walnut, Yew, Other North American Woods
SPECIALTY ITEMS: Architectural Veneer, Burls/Crotches, Clipped & Bundled Veneer, Custom Slicing, Cut-To-Size Veneer, Door Jams, Freeform, Linea, Logs for Sale, Reconstituted Veneer, Rustic, Sliced Flooring, Spliced Faces, Unclipped Veneer, Vintage, Vinterio, Veneer for Export, 3D Veneer

**SLICED HARDWOOD VENEER
MANUFACTURERS (M) AND SALES COMPANIES (S)**

	MINIMUM THICKNESS	MAXIMUM THICKNESS	MINIMUM LENGTH	MAXIMUM LENGTH	TYPE
<u>DANZER VENEER AMERICAS - EAST (M/S)</u>	1/64"	5/32"	--	155"	Half Round
Sales: Fernando Zertuche, Darlington, PA (724) 827-8366	0.35mm	4.0mm		4000mm	Plain Sliced
Jason Norton, Darlington, PA – Flooring Lamellas (724) 827-8366					Rift/ True Quarter
John Byerly, High Point, NC (336) 255-5401					
Mike Schierz, Durham, ON, Canada (519) 369-3310					
Jason Shade, Montreal, QC, Canada (570) 772-7869					

Web: www.danzer.com

Please see our ad on inside back cover for more information.

Certified (FSC-Mixed Credit & FSC-CW) veneer is available.

Certified to the American National Standard for Due Diligence in Procuring/Sourcing Legal Timber (ANS LTDD) by Capital Testing

SPECIES AVAILABLE: Exotics, Red Alder, Ash, Basswood, Beech, Birch, Butternut, Aromatic & Western Red Cedar, Cherry, Cypress, Elm, Fir/Hemlock, Guanacaste, Gum, Hackberry, Hickory/Pecan, Madrona, Bird’s-Eye, Curly/Fiddleback, Western, Quilted, Hard & Soft Maple, Red & White Oak, White/Ponderosa/Sugar & Yellow Pine, Poplar, Sapelli, Sycamore, Tupelo, Walnut, Yew, Other North American Woods

SPECIALTY ITEMS: Architectural Veneer, Burls/Crotches, Clipped & Bundled Veneer, Custom Slicing, Cut-To-Size Veneer, Door Jams, Freeform, Linea, Logs for Sale, Reconstituted Veneer, Rustic, Sliced Flooring, Spliced Faces, Unclipped Veneer, Vintage, Vinterio, Veneer for Export, 3D Veneer

<u>DANZER VENEER AMERICAS - WEST (M/S)</u>	1/64"	5/32"	--	155"	Half Round
Sales: Matt Miller, Edinburgh, IN (812) 526-2601	0.35mm	4.0mm		4000mm	Plain Sliced
Mike Barajas, Cerritos, CA (562) 926-3639					Rift/ True Quarter
Jason Shade, Sumner, WA (570) 772-7869					
Jason Norton, Darlington, PA – Flooring Lamellas (724) 827-8366					

Web: www.danzer.com

Please see our ad on inside back cover for more information.

Certified (FSC-Mixed Credit & FSC-CW) veneer is available.

Certified to the American National Standard for Due Diligence in Procuring/Sourcing Legal Timber (ANS LTDD) by Capital Testing

SPECIES AVAILABLE: Exotics, Red Alder, Ash, Basswood, Beech, Birch, Butternut, Aromatic & Western Red Cedar, Cherry, Cypress, Elm, Fir/Hemlock, Guanacaste, Gum, Hackberry, Hickory/Pecan, Madrona, Bird’s-Eye, Curly/Fiddleback, Western, Quilted, Hard & Soft Maple, Red & White Oak, Ponderosa/Sugar, White & Yellow Pine, Poplar, Sapelli, Sycamore, Tupelo, Walnut, Yew, Other North American Woods

SPECIALTY ITEMS: Architectural Veneer, Burls/Crotches, Clipped & Bundled Veneer, Custom Slicing, Cut-To-Size Veneer, Door Jams, Freeform, Linea, Logs for Sale, Reconstituted Veneer, Rustic, Sliced Flooring, Spliced Faces, Unclipped Veneer, Vintage, Vinterio, Veneer for Export, 3D Veneer

**SLICED HARDWOOD VENEER
MANUFACTURERS (M) AND SALES COMPANIES (S)**

	MINIMUM THICKNESS	MAXIMUM THICKNESS	MINIMUM LENGTH	MAXIMUM LENGTH	TYPE
<u>ELDCAN FOREST PRODUCTS LTD. (M/S)</u> Owner: George Doonan Sales/Plant Manager: Candace Goss 2949 Shuswap Road Kamloops, BC, Canada V2H 1S9 (250) 573-1900; Fax: (250) 573-1816 E-mail: cgoss@eldcan.com Web: www.eldcan.com	1/127"	1/8"	36" 3'	156" 3962mm	Plain Sliced VG
SPECIES AVAILABLE: Red Alder, Douglas Fir SPECIALTY ITEMS: Custom Slicing, Custom Splicing					
<u>FORCEY LUMBER AND VENEER CO. (M/S)</u> Sales: Ross Forcey 2020 Shiloh Rd., Woodland, PA 16881 (814) 857-5002; Fax: (814) 857-5000 Mobile: (814) 592-1726 E-mail: ross@forceylumber.com Web: www.forceylumber.com Environmentally Certified Products Available: FSC, Chain of Custody, Controlled Wood, BV-COC-012533EW, BV-CW-012533EW	1/50"	1/10"	48" 4'	144" 12' 3657mm	Plain Sliced/Rift
SPECIES AVAILABLE: Ash, Cherry, Hard & Soft Maple, Red & White Oak, Poplar SPECIALTY ITEMS: Custom Slicing, Cut-To-Size, Clipped & Bundled Veneer, Lumber					
<u>THE FREEMAN CORPORATION (M)</u> Sales: George Freeman P.O. Box 96, Winchester, KY 40392-0096 (859) 744-4311; Fax: (859) 744-4363 E-mail: sales@freemancorp.com Web: www.freemancorp.com Environmentally Certified Products Available: FSC	1/85" 0.3mm	1/7" 3.5mm	--	204" 5180mm	Half Round Plain Sliced Rift/ Quarter Slcd.
SPECIES AVAILABLE: Red Alder, Ash, Basswood, Beech, Birch, Butternut, Cherry, Elm, Gum, Hackberry, Hickory/Pecan, Bird's-Eye, Curly/Fiddleback, Hard & Soft Maple, Red & White Oak, White/Ponderosa/Sugar & Yellow Pine, Poplar, Sycamore, Walnut, Other North American Woods SPECIALTY ITEMS: Clipped & Bundled – Export, Logs for Sale, Veneer-Architectural, Veneer-Cut-To-Size					

SLICED HARDWOOD VENEER MANUFACTURERS (M) AND SALES COMPANIES (S)

	MINIMUM THICKNESS	MAXIMUM THICKNESS	MINIMUM LENGTH	MAXIMUM LENGTH	TYPE
--	----------------------	----------------------	-------------------	-------------------	------

<u>GREAT LAKES VENEER (M)</u>	1/50"	1/5"	10"	104"	Sliced
Sales: Michael Burkart, Business & Product Dev. Dir.	0.5mm	5.1mm	254mm	2550mm	
Nick Rogers, Business & Product Dev. Mgr.					
P.O. Box 476, Marion, WI 54950-0476					
(715) 754-2501; Fax: (715) 754-2582					
E-mail: mike.burkart@greatlakesveneer.com ; nrogers@greatlakesveneer.com					
Web: www.greatlakesveneer.com					
Environmentally Certified Products Available: FSC					

SPECIES AVAILABLE: Ash, Basswood, Beech, Birch, Cherry, Elm, Gum, Hackberry, Hickory/Pecan, Curly/Fiddleback, Hard & Soft Maple, Red & White Oak, White/Ponderosa/Sugar Pine, Poplar, Sycamore, Walnut

SPECIALTY ITEMS: Logs for Sale, Veneer-Cut-To-Size

<u>LES BOISES LA FLEUR INC</u>	1/50"	1/26"	24"	124"	Rift
Sales: Shane Walker	0.50mm	0.85mm	610mm	3150mm	False Rift
219 Francois Bourgeois					
Victoriaville, Que, Canada G6T 2G9					
(819) 758-9441; Cell: (819) 352-3299					
E-mail: swalker@blf-inc.com					
Web: www.blf-inc.com					

SPECIES AVAILABLE: Red Alder, Cherry, Maple, Walnut, Euro Steamed Beech, White Oak, Poplar, Radiata Pine, Khaya, Sapele, Aromatic Cedar, Hickory, White Ash

SPECIALTY ITEMS: Stock Panel, Door Faces, Counter Fronts, Architectural Matching, Cut-To-Size

<u>MCCATHAY TIMBER, INC. (S)</u>	1/85"	1/6"	2"	180"	Half Round
Sales: Dan Roach, President				15'	Plain Sliced
Ken Roach, Vice-President	0.3mm	4.2mm	50mm	4572mm	Rift/
1529 West Armitage Avenue, #200					
Chicago, IL 60642-1258					
(773) 227-1171; Fax: (773) 227-6767					
(800) 6 VENEER					
E-mail: info@mccathaytimber.com					
Web: www.mccathaytimber.com					
Environmentally Certified Products Available: FSC, SFI					

SPECIES AVAILABLE: Exotics, Red Alder, Ash, Aspen, Basswood, Birch, Beech, Cherry, Cottonwood, Elm, Fir/Hemlock, Black & Sweet Gum, Hickory/Pecan, Western, Quilted, Hard & Soft Maple, Red & White Oak, White & Yellow Pine, Poplar, Sycamore, Tupelo, Walnut, and other North American Woods

SPECIALTY ITEMS: Clipped & Bundled, Custom Splicing to Door Faces and Panel Dimensions, Veneer-Cut-To-Size, Veneer-Edge Band, Veneer for Export, Plywood, Platforms, Butcher Block, Edge-Glued Lumber

**SLICED HARDWOOD VENEER
MANUFACTURERS (M) AND SALES COMPANIES (S)**

	MINIMUM THICKNESS	MAXIMUM THICKNESS	MINIMUM LENGTH	MAXIMUM LENGTH	TYPE
<u>MARWOOD (S)</u> Sales: Jim and Lyman Martin 2901 Hamburg Pike Jeffersonville, IN 47130 (812) 288-8344 E-mail: Jim@MarwoodVeneer.com Web: www.MarwoodVeneer.com Environmentally Certified Products Available: FSC, Other	1/64"	1/16"	---	12'6"	Plain Sliced Half Round Rift/ Quarter Slcd. Rotary

SPECIES AVAILABLE: Exotics, Reclaimed Sinker Cypress, Reclaimed Sinker Pine, Teak, Burls, Rosewood, Purpleheart, Ash, Butternut, Cherry, Fir, Maple, Oak, Walnut

SPECIALTY ITEMS: Okoume Backs – Rotary Cut, Skateboard Maple Veneers, Color Dyed Veneers

<u>NORTHERN MICHIGAN VENEERS, INC. (M/S)</u> A Besse Forest Products Group Company Sales: Don Tomaszewski, Greg Besse, President P.O. Box 352, Gladstone, MI 49837 (906) 428-3113; Fax: (906) 428-1525 Mill: Gladstone, MI E-mail: besse-sales@bessegroup.com Web: www.bessegroup.com Environmentally Certified Products Available: FSC, Other	1/50" 0.5mm	3/16" 4.8mm	30" 762mm	123" 3124mm	Plain Sliced Rift/ Quarter Slcd.
---	----------------	----------------	--------------	----------------	--

SPECIES AVAILABLE: Exotics, Red Alder, Ash, Basswood, Beech, Birch, Aromatic & Western Red Cedar, Cherry, Fir/Hemlock, Hickory/Pecan, Bird's-Eye, Curly/Fiddleback, Hard & Soft Maple, Red & White Oak, White/Ponderosa/Sugar Pine, Poplar, Walnut, Other North American Woods

SPECIALTY ITEMS: Clipped & Bundled - Export, Custom Slicing, Logs for Sale, Veneer-Architectural, Veneer-Cut-To-Size

<u>ST-RAYMOND VENEERS, THE PENROD COMPANY</u> Sales: St-Raymond Veneers Sales (M/S) 595 Guyon Street St-Raymond, QC, Canada G3L 1Z1 (418) 337-4607; Fax: (418) 337-8342 E-mail: Sales.SRV@SRVINC.com Web: www.SRVINC.com	1/64" 0.4mm	1/16" 1.5mm	48" 1219mm	130" 3302mm	Plain Sliced Rift/ Quarter Slcd.
---	----------------	----------------	---------------	----------------	--

SPECIES AVAILABLE: Exotics, Birch, Aromatic Cedar, Cherry, Fir/Hemlock, Hickory/Pecan, Bird's-Eye, Curly/Fiddleback, Hard & Soft Maple, Red & White Oak, Yellow Pine, Poplar, Spruce, Walnut, Other North American Woods

SPECIALTY ITEMS: Burls/Crotches, Clipped & Bundled - Export, Custom Slicing, Veneer-Architectural, Veneer-Cut-To-Size, Veneer, Edge Band

<u>VERMONT WILDWOODS (M)</u> 182 Lafiria Place Marshfield, VT 05658 (802) 793-1265 Web: www.vermontwildwoods.com					
---	--	--	--	--	--



**DECORATIVE
HARDWOODS**
AssociationSM

RESOURCES

Looking for a copy of the national consensus standards for hardwood and decorative plywood or engineered wood flooring, or want comprehensive training for your team? DHA is committed to making it easier to do business with easy-to-download resources, many of which are free.



**American National Standard
for Hardwood and Decorative
Plywood, ANSI/HPVA
HP-1-2020**

Requirements for face, back, and inner ply grades plus formaldehyde emissions, moisture content, tolerances, and more.



**American National Standard
for Engineered Wood Flooring,
ANSI/HPVA EF 2020**

Grade descriptions, test procedures, and requirements for veneer thickness, machining, moisture content, and finishing.



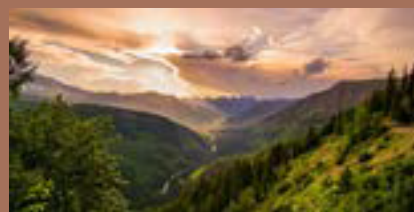
**American National Standard
for Due Diligence in Procuring/
Sourcing Legal Timber ANS
LTDD 1.0 2015**

Guidelines for creating and managing a quality assurance program to exclude illegal timber from the supply chain.



**Hardwood Plywood,
Engineered Wood Flooring &
Hardwood Veneer: The Basics**

An AIA-accredited introduction to hardwood plywood, engineered wood flooring, and hardwood veneer. Qualifies for one AIA LU/HSW hour.



**Hardwood Plywood,
Engineered Wood Flooring &
Hardwood Veneer:
The Specifics**

An AIA-accredited course on the types of hardwood plywood and veneer and how they are manufactured. Qualifies for one AIA LU elective hour.



**Grading Workshop
Sessions**

This comprehensive course on decorative hardwood plywood includes product construction, standards, species, grades, and much more.

DOWNLOAD NOW:

www.decorativehardwoods.org/products



SPLICED HARDWOOD VENEERS

- Environmentally friendly.
- Made to standards agreed upon between buyer and seller – grade, craftsmanship, etc.
- Continuity from order to order.
- Cost control.

For more information, read *Facts About Decorative Veneers* listed in the Table of Contents.



Photo courtesy of Danzer

**SPLICED FACE VENEER
MANUFACTURERS (M) AND SALES COMPANIES (S)**

	MINIMUM THICKNESS	MAXIMUM THICKNESS	MINIMUM LENGTH	MAXIMUM LENGTH	TYPE
<u>BIRCHLAND PLYWOOD-VENEER LTD.</u>	1/40"	1/16"	28"	150"	Rotary
P.O. Box 430, Thessalon, ON, Canada P0R 1L0	0.6mm	1.6mm	711mm	3810mm	Half Round
(705) 842-2430; Fax: (705) 842-2496					Plain Sliced
E-mail: sales@birchlandplywood.com					Rift/
Web: www.birchlandplywood.com					Quarter Slcd.
Environmentally Certified Products Available: FSC					

SPECIES AVAILABLE: Exotics, Red Alder, Anigre, Ash, Basswood, Beech, Birch, Burls, Butternut, Cedar, Aromatic Cedar, American Cherry, Elm, Fir-Vertical Grain, Gum, Hickory, Idaho White Pine, Khaya, Knotty Pine, Honduras Mahogany, Maple, Red & White Oak, Pecan, Poplar, Sapele, Sycamore, Tupelo, Walnut, Any Species on Request

SPECIALTY ITEMS: Aromatic Cedar Paneling, Blueprint Matched Panels, Calibrated Platforms, Combination, Cut-To-Size, Door Skins, Finished Stock Panels, Lumber, MDF, Particleboard, Stock Panels, Unidirectional, Veneer - Reconstituted – Flame Spread Rating A, B, C

<u>CLARKE VENEERS & PLYWOOD (S)</u>	1/85"	1/6"	--	123"	Rotary
Sales: Stuart Clarke	0.3mm	4.1mm		3125mm	Plain Sliced
Bronson Newburger					Rift/
P.O. Box 4876, Jackson, MS 39296-4876					Quarter Slcd.
(601) 366-0331; Fax: (601) 366-0334					
E-mail: info@clarkeveneers.com					
Web: www.clarkeveneers.com					
Environmentally Certified Products Available: FSC, Other					

SPECIES AVAILABLE: Exotics, Ash, Aspen, Basswood, Beech, Birch, Aromatic Cedar, Cherry, Eucalyptus, Gum, Hickory/Pecan, Khaya, Hard & Soft Maple, Red & White Oak, Ponderosa/Sugar & Yellow Pine, Poplar, Sycamore, Tupelo, Walnut, Other North American Species

SPECIALTY ITEMS: Counter Fronts, Custom Splicing, Cut-To-Size Veneer, Stock Panel/Door Faces, Veneer for Export

<u>DANZER CANADA INC. (M/S)</u>	1/50"	1/16"	--	122"	Half Round
Danzer Veneer Americas	0.5mm	1.5mm		3098mm	Plain Sliced
Sales: Mike Schierz, Durham, ON, Canada					Rift/
(519) 369-3310					Quarter Slcd.
Scott Kaufman, Durham, ON, Canada					
(519) 369-3310					
Jason Shade, Montreal, QC, Canada					
(570) 772-7869					
Barry Carroll, Darlington, PA					
(724) 827-8366					
Web: www.danzer.com					

Please see our ad on inside back cover for more information.

Certified (FSC-PURE & FSC-CW) faces are available.

Certified to the American National Standard for Due Diligence in Procuring/Sourcing Legal Timber (ANS LTDD) by Capital Testing

SPECIES AVAILABLE: Exotics, Red Alder, Ash, Aspen, Basswood, Beech, Birch, Butternut, Aromatic Cedar, Cherry, Elm, Eucalyptus, Fir, Hemlock, Hickory/Pecan, Khaya, Madrona, Honduras Mahogany, Bird's-Eye, Curly/Fiddleback, Western, Quilted, Hard & Soft Maple, Myrtlewood, Red & White Oak, Ponderosa/Sugar, White & Yellow Pine, Poplar, Spruce, Sycamore, Walnut, Other North American Species

SPECIALTY ITEMS: Architectural Matching, Counter Fronts, Custom Splicing, Cut-To-Size Veneer, Door Jams, Spliced Faces (Panel/Door), Veneer for Export

**SPLICED FACE VENEER
MANUFACTURERS (M) AND SALES COMPANIES (S)**

	MINIMUM THICKNESS	MAXIMUM THICKNESS	MINIMUM LENGTH	MAXIMUM LENGTH	TYPE
<p><u>ELDCAN FOREST PRODUCTS LTD. (M/S)</u> Owner: George Doonan Sales/Plant Manager: Candace Goss 2949 Shuswap Road Kamloops, BC, Canada V2H 1S9 (250) 573-1900; Fax: (250) 573-1816 E-mail: cgoss@eldcan.com Web: www.eldcan.com</p> <p>SPECIES AVAILABLE: Red Alder, Douglas Fir SPECIALTY ITEMS: Custom Splicing, Custom Slicing</p>	1/50" 0.5mm	1/16" 1.5mm	50" 1270mm	106" 2692mm	Plain Sliced VG
<p><u>GREAT LAKES VENEER (M)</u> Sales: Michael Burkart, Business & Product Dev. Dir. Nick Rogers, Business & Product Dev. Mgr. P.O. Box 476, Marion, WI 54950-0476 (715) 754-2501; Fax: (715) 754-2582 E-mail: mike.burkart@greatlakesveneer.com; nrogers@greatlakesveneer.com Web: www.greatlakesveneer.com Environmentally Certified Products Available: FSC</p> <p>SPECIES AVAILABLE: Ash, Aspen, Basswood, Beech, Birch, Cherry, Cottonwood, Elm, Gum, Hickory/Pecan, Hard & Soft Maple, Red & White Oak, Poplar, Sycamore, Walnut, Other North American Species SPECIALTY ITEMS: Custom Splicing, Cut-To-Size Veneer, Veneer for Export</p>	1/50" 0.5mm	1/4" 6.4mm	10" 254mm	104" 2550mm	Rotary Half Round Plain Sliced Rift/ Quarter Slcd.

**SPLICED FACE VENEER
MANUFACTURERS (M) AND SALES COMPANIES (S)**

	MINIMUM THICKNESS	MAXIMUM THICKNESS	MINIMUM LENGTH	MAXIMUM LENGTH	TYPE
<u>LES BOISES LA FLEUR INC</u> Sales: Shane Walker 219 Francois Bourgeois Victoriaville, Que, Canada G6T 2G9 (819) 758-9441; Cell: (819) 352-3299 E-mail: swalker@blf-inc.com Web: www.blf-inc.com	1/50" 0.50mm	1/26" 0.85mm	24" 610mm	124" 3150mm	Rift False Rift Quartered Plain Sliced

SPECIES AVAILABLE: Red Alder, Cherry, Maple, Walnut, Euro Steamed Beech, White Oak, Poplar, Radiata Pine, Khaya, Sapele, Aromatic Cedar, Hickory, White Ash
SPECIALTY ITEMS: Stock Panel, Door Faces, Counter Fronts, Architectural Matching, Cut-To-Size



MORE THAN 40 SPECIES OF VENEER


**Dedicated to finding
the right veneer
for your project**




819 758-9441 | info@blf-inc.com
 219, rue Francois-Bourgeois, Victoriaville, QC G6T 2G9
blf-inc.com  Nous sommes bilingues.
 We are bilingual.

S
P
L
I
C
E
D

**SPLICED FACE VENEER
MANUFACTURERS (M) AND SALES COMPANIES (S)**

MINIMUM THICKNESS	MAXIMUM THICKNESS	MINIMUM LENGTH	MAXIMUM LENGTH	TYPE
----------------------	----------------------	-------------------	-------------------	------

LIGNUM VENEER

285, Francois Bourgeois
Victoriaville, Que, Canada G6T 2G9
(819) 751-2282; Fax: (819) 751-0160
Web: www.lignumveneer.com

MANTHEI WOOD PRODUCTS (M)

Sales: Matt Smith
3996 US 31 South
Petoskey, MI 49770
(231) 347-7040; Fax: (231) 347-1369
E-mail: sales@mantheiwoodproducts.com
Web: www.mantheiwoodproducts.com

1/100"	1/6"	2"	168"	Rotary
0.25mm	4.2mm	50mm	14'	Half Round
			4267mm	Plain Sliced
				Rift/ Quarter Slcd.

SPECIES AVAILABLE: Ash, Aspen, Basswood, Beech, Birch, Cherry, Hickory/Pecan, Madrone, Bird's-Eye, Curly/Fiddleback, Hard & Soft Maple, Red & White Oak, Poplar, Walnut

SPECIALTY ITEMS: Architectural Matching, Counter Fronts, Stock Panel/Door Faces, Veneer-Cut-To-Size, Veneer for Export

NORTHERN MICHIGAN VENEERS, INC. (M/S)

A Besse Forest Products Group Company
Sales: Don Tomaszewski, Greg Besse, President
P.O. Box 352, Gladstone, MI 49837
(906) 428-3113; Fax: (906) 428-1525
Mill: Gladstone, MI
E-mail: besse-sales@bessegroup.com
Web: www.bessegroup.com
Environmentally Certified Products Available: FSC, Other

1/50"	3/16"	30"	123"	Rotary
0.5mm	4.8mm	762mm	3124mm	Plain Sliced
				Rift/ Quarter Slcd.

SPECIES AVAILABLE: Exotics, Red Alder, Ash, Birch, Aromatic & Western Red Cedar, Cherry, Fir, Hickory/Pecan, Bird's-Eye, Curly/Fiddleback, Hard & Soft Maple, Red & White Oak, Walnut, Other North American Species

SPECIALTY ITEMS: Counter Fronts, Custom Splicing, Cut-To-Size Veneer, Stock Panels/Door Faces, Veneer for Export

ST-RAYMOND VENEERS, THE PENROD COMPANY

Sales: St-Raymond Veneers Sales (M/S)
595 Guyon Street
St-Raymond, QC, Canada G3L 1Z1
(418) 337-4607; Fax: (418) 337-8342
E-mail: Sales.SRV@SRVINC.com
Web: www.SRVINC.com

1/64"	1/16"	48"	130"	Rotary
0.4mm	1.5mm	1219mm	3302mm	Half Round
				Plain Sliced
				Rift/ Quarter Slcd.

SPECIES AVAILABLE: Exotics, Red Alder, Ash, Beech, Birch, Aromatic & Western Red Cedar, Cherry, Fir, Hickory/Pecan, Bird's-Eye, Curly/Fiddleback, Hard & Soft Maple, Red & White Oak, White Pine, Poplar, Walnut, Other North American Species

SPECIALTY ITEMS: Counter Fronts, Custom Splicing, Cut-To-Size Veneer, Stock Panel/Door Faces, Veneer for Export

**SPLICED FACE VENEER
MANUFACTURERS (M) AND SALES COMPANIES (S)**

	MINIMUM THICKNESS	MAXIMUM THICKNESS	MINIMUM LENGTH	MAXIMUM LENGTH	TYPE
<p><u>TIMBER PRODUCTS COMPANY (M)</u> Sales: Terry Ostrander, Veneer Sales Mgr. P.O. Box 378, Munising, MI 49862-0378 (906) 452-6221; Fax: (906) 452-6348 E-mail: tostrander@timberproducts.com Web: www.timberproducts.com Environmentally Certified Products Available: FSC</p>	<p>1/64" 0.4mm</p>	<p>1/28" 0.91mm</p>	<p>34" 864mm</p>	<p>99" 2515mm</p>	<p>Rotary</p>
<p>SPECIES AVAILABLE: Birch, Hard Maple, Soft Maple SPECIALTY ITEMS: Architectural Matching, Counter Fronts, Cut-To-Size Veneer, Stock Panel/Door Faces, Veneer for Export</p>					
<p><u>VENEER TECHNOLOGIES INC. (M)</u> Division of Moehring-Group Sales: Greg Simon P.O. Box 1145, Newport, NC 28570 (252) 223-5600; Fax: (252) 223-3511 (800) 593-5601 E-mail: gsimon@veneertech.com Web: www.veneertech.com Environmentally Certified Products Available: FSC Certified to the American National Standard for Due Diligence in Procuring/Sourcing Legal Timber (ANS LTDD) by Capital Testing</p>	<p>1/50" 0.5mm</p>	<p>1/24" 1.0mm</p>	<p>38" 965mm</p>	<p>135" 3429mm</p>	<p>Rotary Half Round Plain Sliced Rift/ Quarter Slcd.</p>
<p>SPECIES AVAILABLE: Exotics, Red Alder, Ash, Aspen, Basswood, Beech, Birch, Butternut, Western Red Cedar, Cherry, Elm, Eucalyptus, Fir, Gum, Hemlock, Hickory/Pecan, Khaya, Madrone, Honduras Mahogany, Bird's-Eye, Curly/Fiddleback, Western, Quilted, Hard & Soft Maple, Myrtlewood, Red & White Oak, Ponderosa/Sugar, White & Yellow Pine, Poplar, Sapele, Sycamore, Tupelo, Walnut, Other North American Species SPECIALTY ITEMS: Burls/Crotches, Counter Fronts, Custom Splicing, Cut-To-Size Veneer, Edge Band Veneer, Stock Panel/Door Faces, Paperbacked/Flexed Veneer, 2-Ply Faces, Reconstituted Veneer</p>					



DHA DISTRIBUTORS



DISTRIBUTORS OF HARDWOOD PLYWOOD**SPECIES:** R-Rotary, H-Half Round, P-Plain Sliced, Q-Quarter Sliced, I-Rift Cut**GLUE TYPES:** EPA TSCA; CARB; Exterior – Technical; Exterior – Type I;Interior – Type II; NAF – No Added Formaldehyde; ULEF – Ultra-Low-Emitting Formaldehyde;
NAUF – No Added Urea Formaldehyde; Phenolic – Phenol Formaldehyde; PVA – Polyvinyl Acetate

	SIZES AVAILABLE	THICKNESSES AVAILABLE	GLUE TYPES	CORE TYPES	ENVIRONMENTALLY CERTIFIED PRODUCTS AVAILABLE FSC, SFI, Other
<u>FESSENDEN HALL DELAWARE</u> Contact: John Bergin 1037 Fowler Court, Dover, DE 19901 (302) 674-4505; Fax: (302) 674-4507 (800) 220-6681 E-mail: johnbergin@fessendenhall.com	96" X 48" 48" X 72" 48" X 96" to 48" X 144"	1/8" - 1"	Type I Type II	Combination Lumber MDF Particleboard Unidirectional Veneer	F, S, O

FESSENDEN HALL OF PENNSYLVANIAContact: Edgar Lobley
3021 Industry Drive, Lancaster, PA 17603
(717) 394-1047; Fax: (717) 295-1725; (800) 220-3157
E-mail: edgarlobley@fessendenhall.com**FESSENDEN HALL, INC.**Contact: John Bergin
1050 Sherman Ave., Pennsauken, NJ 08110
(856) 665-2210; Fax: (856) 665-6518; (800) 220-2233
E-mail: johnbergin@fessendenhall.com**FESSENDEN HALL, INC.**Contact: John Bergin
1 Fairfield Place, West Caldwell, NJ 07006
(800) 220-2233; Fax: (800) 210-4248
E-mail: johnbergin@fessendenhall.com**SPECIES DISTRIBUTED:** Exotics-R,H,P,Q,I, Anigre-Q, Ash-R,P, Beech-P,Q, Birch-R, Butternut-P, Cedar-Q, American Cherry-P,Q, Hickory-P, Idaho White Pine-P, Khaya-P, Knotty Pine-P, Koa-P,Q, Honduras Mahogany-P, Maple-R,P, Bird's-Eye Maple-P, Red & White Oak-R,P,Q,I, Pecan-P, Poplar-R, Sycamore-Q, Walnut-P, Any Species on Request-R,H,P,Q,I**HARDWOOD PLYWOOD SPECIALTY ITEMS:** Banded, Bending Boards, Cabinet Doors, Curved/Molded Items, Die Boards, Drawer Sides/Backs Nosed/Grooved, Edge Banding, Furniture Panels, Kitchen Cabinet Components, Stock Panels, Table & Desk Tops, Veneer, Bendable, Veneer/Plywood – Musical Instruments – Flame Spread Rating A, B, C, 150 Canada**PREFINISHED SPECIALTY PANELS:** Architectural, Industrial, Paper Overlay, Printed, Vinyl Laminated – Flame Spread A, B, C, 150 Canada**PITTSBURGH FOREST PRODUCTS CO.**Contact: Troy Halo
375 Valley Brook Rd., McMurray, PA 15317
(724) 969-5000; Fax: (724) 969-1100
E-mail: inquiry@pittsburghforest.com
Web: www.pittsburghforest.com

48" X 96" Cut-To-Size Oversize	1/8" - 1-3/16"	CARB Type I CARB Type II NAUF Phenolic PVA	Combination Lumber MDF Particleboard Unidirectional Veneer	FSC
--------------------------------------	-------------------	--	---	-----

SPECIES DISTRIBUTED: Exotics-R,P, Bamboo-R,P, Beech-R,P, Birch-R,P, American Cherry-R,P, Hickory-P, Knotty Pine-P, Maple-R,P, Honduras Mahogany-R,P, Red Oak-R,P,Q, White Oak-P,Q, Pecan-P, Poplar-R, Walnut-P, Any Species on Request-R,H,P,Q**HARDWOOD PLYWOOD SPECIALTY ITEMS:** Aircraft Applications, Banded, Bending Boards, Cabinet Doors, Curved/Molded Items, Die Boards, Door Skins, Drawer Sides/Backs Nosed/Grooved, Edge Banding, Furniture Panels, IIB Door Core, Kitchen Cabinet Components, Machine Parts (Shaped), School/Church Components, Stock Panels, Table & Desk Tops, Upholstery Frame Panels, Veneer, Bendable**PREFINISHED SPECIALTY PANELS:** Architectural, Industrial, Paper Overlay, Printed, Vinyl Laminated, UV Topcoats

DISTRIBUTORS OF HARDWOOD PLYWOOD

SPECIES: R-Rotary, H-Half Round, P-Plain Sliced, Q-Quarter Sliced, I-Rift Cut

GLUE TYPES: EPA TSCA; CARB; Exterior – Technical; Exterior – Type I;

Interior – Type II; NAF – No Added Formaldehyde; ULEF – Ultra-Low-Emitting Formaldehyde;

NAUF – No Added Urea Formaldehyde; Phenolic – Phenol Formaldehyde; PVA – Polyvinyl Acetate

	SIZES AVAILABLE	THICKNESSES AVAILABLE	GLUE TYPES	CORE TYPES	ENVIRONMENTALLY CERTIFIED PRODUCTS AVAILABLE FSC, SFI, Other
<p><u>ROBERT WEED CORP.</u> Contact: Dave Ramundo P.O. Box 487, Bristol, IN 46507 (574) 848-4408; Fax: (574) 848-5812 E-mail: sales@robertweedplywood.com Web: www.robertweedplywood.com</p>	60" X 96" 48" X 72" to 48" X 144"	1/8" - 1-1/4"	Type I Type II	Combination MDF Particleboard Veneer	--

SPECIES DISTRIBUTED: Exotics-R,H,P,Q, Ash-P,Q, Beech-P,Q, Birch-R,P, Cedar-R,H,P,Q, American Cherry-P,Q, Hickory-R,H,P,Q, Knotty Pine-R,H,P,Q, Koa-R,H,P,Q, Maple-R,P, Bird’s-Eye Maple-R,P, Red & White Oak-R,P,Q, Pecan-R,P, Poplar-R,P, Walnut-P, Any Species on Request-R,H,P,Q,

HARDWOOD PLYWOOD SPECIALTY ITEMS: Banded, Bending Boards, Drawer Sides/Backs Nosed/Grooved, Edge Banding, Kitchen Cabinet Components, School/Church Components, Stock Panels, Veneer, Bendable - Flame Spread Rating A, B, C, 150 Canada

PREFINISHED SPECIALTY PANELS: Architectural, CNC Router, Cut-To-Size, Foil, Paper Overlay, Printed, Profile Mouldings, RTF Vacuum Wrap, Vinyl Laminated, Wrap Mouldings

<p><u>RODDIS LUMBER & VENEER CO. LP.</u> Contact: Scott Friedrichsen 727 N. Cherry St., San Antonio, TX 78202 (210) 226-1426; Fax: (210) 226-1591 E-mail: sfriedrichsen@roddislumber.com Web: www.roddislumber.com</p>	60" X 60" 48" X 120" 48" X 96" 48" X 72"	1/8" - 1-1/8"	Type I Type II	Combination Lumber MDF Particleboard Veneer	F
--	---	------------------	-------------------	---	---

SPECIES DISTRIBUTED: Exotics-R,P,Q,I, Anigre-P,Q, Ash-R,P, Bamboo-R, Beech-P,Q, Birch-R,P, Butternut-P, Cedar-P, American Cherry-P, Hickory-P, Idaho White Pine-P, Khaya-P,Q, Knotty Pine-P, Koa-P, Honduras Mahogany-P,Q, Maple-R,P, Bird’s-Eye Maple-P, Red & White Oak-R,P,Q,I, Pecan-P, Poplar-R, Sycamore-P, Walnut-P, Any Species on Request-R,P,Q,I

HARDWOOD PLYWOOD SPECIALTY ITEMS: Bending Boards, Curved/Molded Items, Drawer Sides/Backs Nosed/Grooved, Edge Banding, Marine Panels, Stock Panels, Table & Desk Tops, Veneer, Bendable - Flame Spread Rating A, C

PREFINISHED SPECIALTY PANELS: Architectural, Industrial, Paper Overlay, Printed, Vinyl Laminated - Flame Spread Rating A, C

DISTRIBUTORS OF HARDWOOD PLYWOOD

SPECIES: R-Rotary, H-Half Round, P-Plain Sliced, Q-Quarter Sliced, I-Rift Cut

GLUE TYPES: EPA TSCA; CARB; Exterior – Technical; Exterior – Type I;

Interior – Type II; NAF – No Added Formaldehyde; ULEF – Ultra-Low-Emitting Formaldehyde;

NAUF – No Added Urea Formaldehyde; Phenolic – Phenol Formaldehyde; PVA – Polyvinyl Acetate

SIZES AVAILABLE	THICKNESSES AVAILABLE	GLUE TYPES	CORE TYPES	ENVIRONMENTALLY CERTIFIED PRODUCTS AVAILABLE FSC, SFI, Other
-----------------	-----------------------	------------	------------	---

RUSSELL PLYWOOD INC.

Contact: Russell DiGiallorenzo
 401 Old Wyomissing Rd., Reading, PA 19611
 (610) 374-4017; Fax: (610) 374-9138
 E-mail: rdg@russellplywood.com
 Web: www.russellplywood.com

96" X 48",
 120"
 60" X 97",
 120"
 48" X 72",
 84", 96", 109",
 120", 144"

1/8" -
 2"

Type I
 Type II

Combination
 Lumber
 MDF
 Particleboard
 Unidirectional
 Veneer

F

SPECIES DISTRIBUTED: Exotics-R,H,P,Q, Anigre-P,Q, Ash-R,P,Q, Basswood-R, Beech-R,P,Q, Birch-R,H,P, Butternut-P, Cedar-R,P, American Cherry-R,P,Q, Hickory-P, Idaho White Pine-R,P, Khaya-P,Q, Knotty Pine-P, Koa-P, Honduras Mahogany-P, Maple-R,H,P,Q, Bird’s-Eye Maple-R,P, Red & White Oak-R,H,P,Q, Pecan-P, Poplar-R,P, Sycamore-R,P, Walnut-P, Wormy Chestnut-P, Any Species on Request-R,H,P,Q

HARDWOOD PLYWOOD SPECIALTY ITEMS: Banded, Bending Boards, Cabinet Doors, Curved/Molded Items, Die Boards, Drawer Sides/Backs Nosed/Grooved, Edge Banding, Furniture Panels, Kitchen Cabinet Components, Machined Parts (Shaped), Marine Panels, School/Church Components, Stock Panels, Table & Desk Tops, Veneer, Bendable, Veneer/Plywood-Musical Instruments - Flame Spread Rating A, B, C, 150 Canada

PREFINISHED SPECIALTY PANELS: Architectural, Hardwood Tambour, Industrial, Paper Overlay, Printed, Vinyl Laminated - Flame Spread Rating A, B, C, 150 Canada



DHA SUPPLIERS



SUPPLIER MANUFACTURERS (M) AND DISTRIBUTORS (D)

P-Plywood V-Veneer O-Other

ALTEC (M)

Altec manufactures, supplies, and supports solutions that help veneer and plywood plants increase production, uptime, recovery and quality across the entire green end. Precision machinery and controls help plants achieve these goals. Since 1999, Altec has continued to expand products and services to help customers achieve higher results. Altec has engineering and manufacturing facilities located in Diboll, TX and Coquitlam, BC.

120-185 Golden Drive
Coquitlam, BC V3K 6T1, Canada
(604) 529-1991; Fax: (604) 529-1992
E-mail: sales@alteconline.com
Web: www.alteconline.com

PVO – Control Systems; V – Lathe Systems; V – XY Scanners; V – Chargers
V – Clipper Scanners; V – Clippers; PV – Handling and Stacking;
PVO – Engineering and Design

ARCLIN (M)

Arclinc is the new suite of high performance surfacing solutions provided by Arclin. One of the products under this brand is Crystal, a high performance dry finish application for hardwood plywood. It provides a clear finish solution that can be smooth or textured while providing high levels of scratch and wear resistance. This surface also performs as a moisture protection layer and protects the wood against surface stains while making it very easy to clean. Crystal also provides UV protection as part of the integrated solution. Arclin is the North American leader in treating technologies, surfacing solutions, resins and adhesives systems for plywood and other wood substrates. With 12 locations across North America we focus on providing great service to our domestic and international markets. Our strategically located technology application laboratories in both the West and East Coast bring us closer to the different markets. Arclin designs and engineers tailor-made solutions for each individual application. Arclin fosters partnerships focused on market growth by providing new market opportunities for our customers.

1000 Holcomb Woods Pkwy., Suite 342
Roswell, GA 30076
(678) 999-2100
Web: www.arclin.com; www.arclyncsurfaces.com

CARGILL BIOINDUSTRIAL (D)

Cargill provides food, agriculture, financial and industrial products and services to the world. Together with farmers, customers, governments and communities, we help people thrive by applying our insights and more than 150 years of experience. We have 150,000 employees in 70 countries who are committed to nourishing the world in a responsible way, reducing environmental impact and improving the communities where we live and work. Cargill BioIndustrial focuses on providing bio-based solutions to industrial markets, including binders and adhesives for construction materials, dielectric fluids, paints, inks and coatings, lubricants, oilfield chemicals, consumer products, flexible foam and other diverse applications. With our global technical expertise in Engineered Wood & Composites, we collaboratively work with our customers to solve their toughest challenges with unique, innovative technologies that create bottom-line value. Furthermore, our customers count on Cargill's global supply chain expertise to provide consistent and reliable supply.

Sales: Dave Garlie, NA BDM – Cargill BioIndustrial Binders & Adhesives
15401 McGinty Road, Wayzata, MN 55391
(715) 271-4225
E-mail: Dave_Garlie@cargill.com
Web: www.cargill.com/adhesives

SUPPLIER MANUFACTURERS (M) AND DISTRIBUTORS (D)

P-Plywood V-Veneer O-Other

FISHER + RÜCKLE AG (Headquarter) (M)

Fisher + Rückle AG, Manufactures of high quality, long lasting wood veneer machines including: crossfeed splicers, longitudinal splicers, single knife and double knife guillotines, jointers, glue applicators, cross clippers and veneer grading lines.

Sales: Alexander Baptista V – Consulting-Design/Application; V – Conveyors; V – Crossfeed Splicers;
Hardhofstrasse 15, 8424 Embrach V – Flooring Equipment; V – Glue Applicators; V – Veneer Clippers;
Switzerland V – Veneer Guillotines; V – Veneer Jointers; V – Veneer Splicers; V – Grading Lines
011 41 56 460 67 00
E-Mail : sales@fisher-ruckle.ch
Web: <http://www.fisher-ruckle.ch>

FISHER + RÜCKLE SALES AND SERVICE, INC. (M)

Fisher + Rückle Sales and Service Inc. is the North American representative for Fisher + Rückle AG (Headquarter in Switzerland) and they offer sales support, quality service, and original OEM parts for Fisher + Rückle AG, Embrach, Switzerland. Supporting FISHER + RÜCKLE AG supplying the veneer industry with new and used veneer machines including crossfeed and longitudinal splicers, single-knife and double-knife guillotines, jointers, glue applicators, cross clippers and veneer grading lines

Contact: Jeff Suehring V – Consulting-Design/Application; V – Conveyors; V – Crossfeed Splicers; V – Grading Lines;
513 S. Howard Street, P.O. Box 373 V – Flooring Equipment; V – Glue Applicators; V – Veneer Clippers;
Wittenberg, WI 54499 V – Veneer Guillotines; V – Veneer Jointers; V – Veneer Splicers
(715) 253-3366, Fax (715) 253-3365
E-Mail: fishruck@frontiernet.net; Web: <http://www.fisher-ruckle-sales.com>

FRANKLIN ADHESIVES & POLYMERS (M)

For 75 years, Franklin Adhesives & Polymers has been the industry leader in bonding wood and wood products. Manufacturers in more than 60 countries trust Franklin's products to provide them the productivity and quality they demand. Their customers know they can rely on their longstanding experience and deep commitment to the development of practical, hardworking solutions that meet real needs on the plant floor. Many of Franklin's brands- Titebond, Multibond, and Advantage - have become renowned in the manufacture of wood products, in assembly, edging and facing, lamination, veneering, and finger jointing. The unmatched breadth of their adhesive product line offers Franklin's customers the performance characteristics they seek. Whatever you might be running in your plant, call Franklin Adhesives & Polymers and see for yourself what makes them the most trusted adhesion company in the world.

Sales: Jaye Schroeder, V.P. of Industrial Business PVO – Adhesives Manufacturer
2020 Bruck St., Columbus, OH 43207 Edge Gluing: **Multibond** – X PVA, Liquid
(800) 487-4583; Fax: (614) 445-1366 **Reactite** – E P I, Emulsion
E-mail: JayeSchroeder@FranklinInternational.com Interior Plywood: **Multibond** – X PVA, Liquid
Web: www.FranklinAdhesivesandPolymers.com **Reactite** – E P I, Emulsion

SUPPLIER MANUFACTURERS (M) AND DISTRIBUTORS (D)

P-Plywood V-Veneer O-Other

GRENZEBACH CORP. (M)

Grenzebach has been an OEM equipment supplier to the building materials industry for over 100 years, supplying high end handling, processing, and drying solutions to the Glass, Solar, Gypsum, Veneer, Fiber Cement, and Insulation industries. With over 60 years of experience providing new dryers and processing equipment into the veneer industry, and over 30 years of experience in rebuilding all brands of veneer dryers, Grenzebach has engineered multiple enhanced veneer drying solutions and rebuild solutions that can be custom fit to the needs of any wood type or customer preference. Grenzebach supplies complete processing lines to the veneer industry with: standard roller dryers, press dryers, belts dryers, sinus belt dryers, feeding systems, unloading systems, stackers, slicers, scanners, and custom AGV transport systems.

USA Sales: Terry Weeks

+1 (770) 330-0358

Email: Terry.Weeks@Grenzebach.com

USA Technical: Karl Aicher

+1 (941) 320-1372

Email: Karl.Aicher@Grenzebach.com

10 Herring Road, Newnan, GA 30265

+1 (770) 253-4980

E-mail: Info.GN@Grenzebach.com

Web: www.grenzebach.com

V – Dryer Systems; V – Electronic Measuring Machines; V – Feeders;

V – Handling Systems; V – Loaders/Unloaders; V – Stacking Systems;

V – Veneer Lathe-Staylog/Full Round; V – Veneer Scanning Systems;

V – Veneer Slicers

HEINRICH KUPER GMBH

As a quality leader in veneer and gluing technology, planing and molding machines as well as foil wrapping machines, KUPER offers its customers exactly what they need. Whether it's standard machines or projects. In addition to the machines, KUPER offers a wide range of services and thus always provides a total package of consulting, machines, and services. Due to the comprehensive spare parts management at KUPER, almost all spare parts are permanently in stock. Therefore, avoiding downtime or loss of production.

Webshop: www.kuper.de/shop/en/new-machines/

Heinrich-Kuper-Str. 10-15

Rietberg, Germany 33397

Phone: +49 5244/984-0

Fax: +49 5244/984-201

E-mail: info@KUPER.de

Web: www.kuper.de

Sales:

Wilhelm Potthoff

Heinrich-Kuper-Str.10-15

Phone:+49 5244/984-726

E-mail: Wilhelm.Potthoff@KUPER.de

Spare Parts:

Heiko Seyfert

Heinrich-Kuper-Str.10-15

Phone: +49 5244/984-344

E-Mail: Heiko.Seyfert

SUPPLIER MANUFACTURERS (M) AND DISTRIBUTORS (D)

P-Plywood V-Veneer O-Other

HEXION INC. (M)

As the world's largest producer of thermoset resins and the leader in adhesive and structural resins and coatings, Hexion Inc. meets customers' specific application needs with a total solutions approach of products and services. Hexion Inc. offers the broadest range of thermoset resin technologies and unmatched technical support and provides them around the globe. With their extensive research and development capabilities and applications know-how, they are uniquely able to work in partnership with customers to co-develop better products and systems.

Order Desk: (866) 443-9466

Web: www.hexion.com

Sales: Performance Adhesives

Alex Brown, Regional Account Manager, West

610 S. 2nd Street, Springfield, OR 97477

(541) 941-8596; Fax: (541) 747-3868

E-mail: alex.brown@hexion.com

Sales: Performance Adhesives

Scott Steller, Regional Account Manager, East

1717 Ward Ave., High Point, NC 27261

(336) 884-8918 ext. 5117; Fax: (336) 884-1023

E-mail: scott.steller@hexion.com

Sales: Plywood and LVL

David Dark, Business Dir., N.A.

3901 Sugarhouse Rd., Alexandria, LA 71301

(318) 445-6115 ext. 17; Cell: (318) 471-7791

E-mail: david.dark@hexion.com

PV – Additives; P – Extenders; P – Fillers; V – Glue Release Coatings

PVO – Manufacturer

Precatalyzed Cross Link PVA

EPI, Emulsion – non-structural and structural

Assembly Gluing

Edge Gluing

HRA rated (Method A) Finger Jointing – vertical studs

Structural Finger Jointing

Hardwood Plywood

Flush Doors

CARB Phase II Technologies

Plastic Laminating

I-Beams

Laminated Beams

Casein Systems

Scarf Jointing

Furniture

Window and Door Component Gluing

Plywood

J.M. LONGYEAR, LLC (D)

J.M. Longyear produces and sells hardwood veneer logs and saw logs.

Kate Tatu – Mill Procurement Supervisor

210 N. Front Street, 1st Floor, Marquette, MI 49855

(906) 458-2973; Fax: (906) 487-6417

E-mail: katetatu@jmlongyear.com

Web: www.jmlongyear.com

KINETIC CO., INC. (M)

Sales: Scott Reboletti – Wood Market Manager

6775 W. Loomis Road, Greendale, WI 53129

(414) 425-8221; Fax: (414) 425-7927

E-mail: Scott.Reboletti@knifemaker.com

Web: www.knifemaker.com

PV – Chipper Blades; PV – Clipper Knives; PV – Debarker Knives;

PV – Grind Table Service/Certification

PV – Grinding Wheels; PV – HOG Knives

PV – Lathe Blades; PV – Planer Blades; PV – Score Knives; PV – Veneer Blades

KOP-COAT PROTECTION PRODUCTS (M)

3040 William Pitt Way

Pittsburgh, PA 15238

(412) 227-2426

Web: www.kop-coat.com

SUPPLIER MANUFACTURERS (M) AND DISTRIBUTORS (D)

P-Plywood V-Veneer O-Other

MEINAN MACHINERY WORKS, INC. (M)

Meinan develops and manufactures innovative machinery for veneer and plywood production, holding hundreds of worldwide patents. Meinan changed the basic engineering concept of veneer peeling with its revolutionary lathe, using spiked disks to drive logs on their circumference, providing better veneer quality, higher yield, and extremely close thickness tolerance. The lathe is part of an automatic veneer peeling line with significant labor cost savings. The newest line features the world's first in-line green veneer composers for joining random width green veneer to improve dryer utilization. Meinan also manufactures scarf composers, grading systems, automatic layup lines, and sanders. Represented in USA by Merritt Machinery, LLC.

Sales Japan: Jimmy Nakaya, Koji Naito
3-130 Kajita-Cho
Obu City, Aichi 434-8543, Japan
011 81 562 472 211; Fax: 011 81 562 48 7300
E-mail: sales@meinan.co.jp

PV – Core Composing Systems; V – Crossfeed Splicers;
PV – Lathe Systems; P – Lay-up Lines; V – Reeling Systems;
PV – Veneer Lathe-Staylog/Full Round; PV – X-Y Chargers

Sales North America:
Merritt Machinery, LLC
10 Simonds St., Lockport, NY 14094
(716) 434-5558; Fax: (716) 434-5575
E-mail: amccann@merrittmachinery.com
Web: www.merrittmachinery.com

MERRITT MACHINERY, LLC (M)

Merritt has been manufacturing machinery for the production of decorative veneer and plywood for more than 150 years. Merritt rotary and guillotine-style veneer clippers, conveyors, slicers, vacuum flitch tables, and knife carriage control upgrades are in operation worldwide. Our newest innovation is the patented FlitchPrep™ machine for automatically cleaning veneer flitches prior to slicing. Merritt is the U.S. representative of Meinan Machinery Works, a global supplier of veneer and plywood equipment. We are committed to providing innovative high-tech production machinery backed by first-rate customer service.

Sales: Anna McCann
10 Simonds St., Lockport, NY 14094
(716) 434-5558; Fax: (716) 434-5575
E-mail: amccann@merrittmachinery.com
Web: www.merrittmachinery.com

V – Controls; V – Conveyors; V – Double Sided Flitch Planers;
V – Electronic Measuring Machines; V – Flitch Machines;
V – Handling Systems; V – Lathe Systems; V – Reeling Systems;
V – Stacking Systems; V – Vacuum Systems; V – Veneer Clippers;
V – Veneer Guillotines; V – Veneer Jointers;
V – Veneer Lathe-Staylog/Full Round; V – Veneer Slicers

NUMATIC FINISHING CORP. (M)

Numatic Finishing is a full architectural wood pre-finishing plant, finishing doors, millwork, paneling, and casework. They do all types of wood finishes including wood treat, preservative treat, fire treat, custom stains and finishes also priming and painting. They work with architects, designers, and owners to help develop and design custom colors and finishes. They are fully automated with two millwork flat-lines, automated door line curing under infrared heat and two areas for those hot samples and rush orders. In 1999 they purchased their first UV flat line, since then they have added a new UV finishing line with a stain module, wiping systems, and three sanders. they can run LEED qualified finishes in all areas

Sales: Mario Vicente (VP) Dan Sportsman (estimating, and management)
3132 C Street N.E., Auburn, WA 98002-1790
(253) 939-2391; Fax: (253) 939-2597
(800) 847-5489
Email: Mario@numaticfinishing.com; dansportsman@numaticfinishing.com; jason@numaticfinishing.com
Web: www.numaticfinishing.com

Wood Pre-finishing

SUPPLIER MANUFACTURERS (M) AND DISTRIBUTORS (D)

P-Plywood V-Veneer O-Other

PREMIERE FINISHING & COATING (M)

Premiere Finishing & Coating has expanded its capabilities in a major way beyond its Flat Line floor finishing equipment with the installation of two new production lines. The new Makor reciprocating Spray Line / Oven combination can handle just about anything we throw at it - cabinets, cabinet parts, doors, frames, moldings, and anything that doesn't fit on the Flat Line. It is versatile and perfect for any 3D spray requirement, large or small. The UV Panel Line can finish clear, stained, opaque, and primed - we can match any color and finish. It has 6 roll coaters, a filler machine, Miltec UV lights, denibbers, and an in-line sealer sander. Now more than ever, if you can dream it, we can finish it.

Sales: CEO - Jeff Beach - 336.337.5788 - E-mail: jbeach@premierefinishingandcoating.com

Flatline Sales Manager - Larry Holcomb - 336.432.0932 – E-mail: holcomb@premierefinishingandcoating.com

Inside Sales Manager - Abbey Linville - 336.349.1994 x 107 – E-mail: alinville@premierefinishingandcoating.com

642 Grooms Road

Reidsville, NC 27320

(336) 349-1994

Web: www.premierefinishingandcoating.com

RAUTE CORP. (M)

Supplier of machinery, services, and technology to the decorative veneer, veneer-based panel, and engineered wood industries globally. Products: veneer slicers and press dryers, veneer lathes and lathe deck equipment, veneer scanners and clippers, green and dry veneer stackers, veneer dryers, plywood layup lines, press systems, veneer composers, panel finishing lines, panel overlaying lines, and control systems. Turnkey supply of automatic veneer slicing and drying lines, plywood plants, and LVL mills.

Sales: Trevor Wendt

1633 Cliveden Ave.

Delta, BC, Canada V3M 6V5

(604) 524-6611; Fax: (604) 521-4035

E-mail: trevor.wendt@raute.com

Web: www.raute.com

PVO – Engineering; PVO – Process Control Systems; PVO – Chippers;
PVO – Consulting-Design/Application; PVO – Controls; PVO – Conveyors;
PV – Core Composing Systems; PVO – Crossfeed Splicers; V – Dryer Systems;
PV – Feeders; PO – Flooring Equipment; PVO – Glue Applicators; PO – Glue Mixers;
PVO – Handling Systems; PVO – Hoists; V – Knives; PV – Lathe Systems;
PVO – Lay-Up Lines; PVO – Loaders/Unloaders; PV – Optimizer Systems;
PO – Overlay Systems; PO – Panel Lines; PV – Patching Lines; PO – Press Equipment;
V – Reeling Systems; PVO – Saw Lines; PVO – Stacking Systems;
PO – Tongue and Groove Machinery; V – Tray Systems; PV – Turnover Conveyors;
PV – Vacuum Systems; V – Veneer Clippers; PV – Veneer Hogs; V – Veneer Jointers;
V – Veneer Lathe-Staylog/Full Round; PV – Veneer Scanning Systems;
V – Veneer Slicers; PV – X-Y Chargers

ROCKET INDUSTRIAL (D)

At Rocket Industrial we share your passion for wood products, and the natural environment that provides them. Our mission to Package with Less™ includes a commitment to sustainability and minimizing waste. We have played a supportive role in veneer production for decades, providing the world's best veneer tapes, glue thread, poly strapping, sheeting, pallet covers, and moisture barriers. The same absolute precision that goes into manufacturing your veneers guides the manufacturing and distribution of Rocket Industrial's veneer tapes, glues and poly products.

Sales: Matt Hahn

200 Washington St., Suite 220

Wausau, WI 54403

(800) 826-4405

E-mail: mhahn@rocketindustrial.com

Web: www.rocketindustrial.com

SUPPLIER MANUFACTURERS (M) AND DISTRIBUTORS (D)

P-Plywood V-Veneer O-Other

ROO GLUE INC. (M)

Roo Glue is a manufacturer of innovative water-based adhesives and adhesive polymers. Roo Glue industrial adhesives are formulated with the latest polymer technology developed in-house. With a fully equipped wood glue testing lab and manufacturing sites on the East and West coasts, Roo Glue is ready to provide solutions for any wood adhesive needs, including custom formulation for your exact application. For plywood and panel manufacturing, ask the experienced team at Roo Glue about switching to a NAUF adhesive solution for your product line. As a brand of The Sherwin-Williams Company, you can count on Roo Glue to deliver innovation, responsiveness, and flexibility to every customer. Our employees are committed to providing the best customer service in the industry. This is what sets Roo Glue apart from the rest!

Sales: Bob Lecomte
Marketing: Jameson Maag – Marketing Mgr.
101 W. Prospect Ave., Cleveland, OH 44115
(216) 217-7133
Web: www.rooglue.com

Diverse Application and Technology Expertise

Furniture
Flat/Curved plywood
Engineered flooring
Doors/Windows
Veneering
Paper lamination
Packaging Wood to non-wood bonding
Vinyl acetate – D2, D3, D4 (1 part, 2 part)
Acrylic

SHERWIN-WILLIAMS CO. (M)

Since 1866, Sherwin-Williams has provided manufacturers and finishers with the coatings they need to make their products look better and last longer, while helping their operations meet productivity and sustainability goals. For industrial wood markets, our innovative solutions go beyond coatings to include knowledge, tools, equipment, supplies and industry-leading support. We're more than a coatings provider — let us show you how we will be your coatings solution partner at wood.sherwin-williams.com.

Extensive Coatings Portfolio for:

- Flooring
- Doors
- Windows
- Kitchen Cabinets
- Furniture
- Fence/Gate/Rail
- Wood Finishing Job Shops
- Architectural Millwork
- Paneling
- Siding
- Millwork
- Prefab Buildings
- Wood Finishing Operations
- Specialty

In addition to coatings Sherwin-Williams provides:

- Expert on-site technical service
- Color and design trend expertise
- Design engineering solutions for finishing lines
- Associated equipment sales and repair

Sales: Greg Fuller – Strategic Account Manager
(518) 461-8098

Email: greg.m.fuller@sherwin.com

Marketing: Jameson Maag – Marketing Manager
101 W. Prospect Ave Cleveland, OH 44115

(216) 217-7133

Email: jameson.d.maag@sherwin.com

Web: <https://industrial.sherwin-williams.com/na/us/en/industrial-wood.html>

SUPPLIER MANUFACTURERS (M) AND DISTRIBUTORS (D)

P-Plywood V-Veneer O-Other

SIEMER MILLING CO. (M)

Siemer Milling Company is a cereal processor located in Hopkinsville, KY. GLU-X and GLU-Xtra are produced as special glue extenders for the plywood industry. These extenders are used to control viscosity and spread, improve tack and bonds, conserve resin, reduce downgrades, and facilitate environmental compliance.

Sales: Jay Wallace

P.O. Box 670, Teutopolis, IL 62467

(217) 857-2240; Fax: (217) 857-3092

Cell: (217) 343-9551

E-mail: jwallace@siemermilling.com

Web: www.siemermilling.com

PO – Additives; PO – Extenders

GO FURTHER WITH GLU-X EXTENDER.



**Enhance panel production and increase
profitability with Glu-X Adhesive Extender**



Production

- Stabilizes Viscosity
- Conserves Adhesives
- Improves Consistency



Profitable

- Increase Coverage
- Use Less Adhesive
- Consistent Quality



Sustainable

- All Natural
- Regenerative
- Clean

SUPPLIER MANUFACTURERS (M) AND DISTRIBUTORS (D)

P-Plywood V-Veneer O-Other

SLR INTERNATIONAL CORPORATION (M)

SLR provides ongoing compliance support and training for a range of wood products facilities. These efforts include due diligence, air permitting, water permitting, stormwater plans, SPCC plans, EPCRA (Form R and Tier 2 reportings), RCRA compliance, and environmental program training. SLR professionals provide in-depth regulatory knowledge and technical skills to guide projects to completion. They work as partners with their clients helping them with the range of issues from day-to-day environmental compliance tasks to long-term, strategic planning necessary for future growth. SLR provides support to wood products operations throughout North America including pulp and paper mills, hardwood flooring facilities, particleboard facilities, plywood mills, packaging facilities, veneer plants, saw mills, chip mills, and door manufacturing.

Sales: Heather Bartlett
1800 Blankenship Road, Suite 440
West Linn, OR 97068
(503) 723-4423; Fax: (503) 723-4436
E-mail: hbartlett@slrconsulting.com
Web: www.slrconsulting.com

Environmental Consulting

SUPPLIER MANUFACTURERS (M) AND DISTRIBUTORS (D)

P-Plywood V-Veneer O-Other

SPECIALTY ORGANICS, INC. (M)

Specialty Organics is a diversified American chemical company. Our BreezeBond™ adhesive is the most-advanced plant-based single component adhesive available today. Going beyond existing plant-based adhesive technology, this product utilizes an abundant inorganic cross-linker. Not only is this product formaldehyde-free, BreezeBond™ also has no harmful petrochemicals. This good shelf-life product meets industry wet bond strength standards and is laboratory tested, zero VOC. This product is ideal for hardwood plywood and engineered flooring applications. It is price competitive with traditional hot-press adhesives on the market today and requires minimal capital investment to use product. BreezeBond™ is made in the USA and is not directly affected by volatile oil markets.

Sales: Joseph Seruto and James Seruto

16276 Koala Road

Adelanto, CA 92301-3915

Office: (760) 246-9000

E-mail: joseph@soichem.com & james@soichem.com

Web: www.soichem.com

PO - Adhesives; PO - Extenders

BreezeBond™ – Soy Adhesive, Liquid

BreezeBond™

The Most Advanced Plant-Based Wood Panel Adhesive



**Petrochemical free
No Formaldehyde**



**Laboratory-tested
Zero VOCs**



**Excellent wet and dry
strength adhesion**



SUPPLIER MANUFACTURERS (M) AND DISTRIBUTORS (D)

P-Plywood V-Veneer O-Other

STILES MACHINERY (M)

Stiles Machinery has been a world-class solutions provider for the last 50 years to the hardwood plywood industry. Stiles offers a wide range of machines to complement the vertical integration capabilities of hardwood plywood manufacturers. Stiles' focus ensures a comprehensive solution for our partners. Stiles' product catalog features industry-leading technologies, including Steinmann sanders, Anthon saws, Wemhöner presses, and other best-in-class machines for value-added manufacturing. Stiles' commitment to our customers extends beyond the machine solutions we provide. We provide best-in-class service, with the largest Service Technician resource in the industry, and 24-hour parts through our one-of-a-kind facilities and regional service networks. Stiles University is another unique asset to enhance the technical competence of your associates. Contact Stiles today to learn more about how we can partner with you for a more successful tomorrow.

Sales: Ron Schmidt
3965 44th Street, SE
Grand Rapids, MI 49512
(616) 698-7500
E-mail: rschmidt@stilesmachinery.com
Web: www.stilesmachinery.com

TAIHEI MACHINERY WORKS, LTD. (M)

Taihei Machinery is a leading manufacturer of veneer and plywood equipment, especially horizontal hot presses up to 140 openings and jet roller dryers. Taihei is the leader in today's knife grinding and honing technologies. In Sep 2016, we opened a showroom of knife grinder and knife honer in Oregon State. We would be happy to have you visit our showroom, where we can grind you company's knives and then arrange for peeling tests at your facilities.

Sales Japan: Sam Matsuoka
955-8, Miyamae, Irukade-Shinden
Komaki City, Aichi, Japan 485-0084
+81-568-73-6431; Fax: +81-568-73-6414
E-mail: h_matsuoka@taihei-ss.co.jp
Web: www.taihei-ss.co.jp

P – Glue Applicators; PV – Knife Grinders; PV – Press Equipment;
PV – Reeling Systems; P – Saw Lines; PV - Dryers
PV – X-Y Charger

Showroom location: 29322 Airport Road, Eugene, OR

VENANGO MACHINE COMPANY, INC. (M)

14118 Route 8-89
Wattsburg, PA 16442
(814) 739-2211; Fax: (814) 739-2024
Web: www.venangomachine.com

VINAVIL AMERICAS (M)

Vinavil is a leading global company in the production of wood adhesives. We manufacture high performing, environmentally friendly adhesives, and other resins in 5 locations, including Laval QC (Canada) and West Chicago IL.

Sales: Hemant Shah, Business Director
1144 East Newport Center Drive
Deerfield Beach, FL 33442
(954) 415-2454; Fax: (954) 246-8800
Email: hjshah@vinavil.com
Web: www.vinavil.com/US

VO – Adhesives Manufacturer

SUPPLIER MANUFACTURERS (M) AND DISTRIBUTORS (D)

P-Plywood V-Veneer O-Other

WEST FRASER (M)

West Fraser., the world's largest producer of Oriented Strand Board, is now producing Industrial Core for the most demanding of applications such as Hardwood Plywood and Engineered Flooring. West Fraser's mills are strategically located throughout North America near key manufacturing operations such as yours. West Fraser offers an array of dimensions and finishes that help to improve your yield and throughput. West Fraser's Engineered Strand Panels (E.S.P.) blend many of the attributes of the traditional cores you are familiar with in one exciting new hybrid core. Reach out to West Fraser today and get introduced to our Solutions Team that will work with your team to provide service, quality and supply second to none.

Sales: Blair S. Ruzicka
1 Toronto Street, Suite 600, Toronto,
ON M5C 2W4, Canada
(470) 201-7660; Fax: 1-866-791-3334
E-mail: ruzickab@westfraser.com
Web: www.westfraser.com

O – Manufacturer

WESTMILL INDUSTRIES USA CORP. (M)

Westmill Industries has been serving the Plywood and Veneer industry since 1975. Recognized as a leader in veneer drying technologies, Westmill supplies new veneer dryer systems, material handling equipment and remodels/rebuilds existing dryers. Westmill is considered the most innovative Dryer Technology company today and we have a large installation base of new and rebuilt veneer dryers throughout North America, South America, and New Zealand. We are the largest stocking supplier of all makes of dryer parts in the world at our headquarters in Abbotsford, BC, with additional warehouses in Eugene, OR and Atlanta, GA.

Sales: George Harmati
30640 Marshall Road
Abbotsford, BC, Canada V2T 6J7
(604) 607-7010; Fax: (604) 607-7099
Toll free number: (877) 607-7010.
E-mail: sales@westmill.com
Web: www.westmill.com

PV – Engineering; PVO – Process Control Systems; V – Dryer Systems;
V – Electronic Measuring Machines; PV – Handling Systems; PV – Hoists;
V – Loaders/Unloaders; PV – Stacking Systems; V – Vacuum Systems

ASSOCIATE MEMBERS

ALTAMONT COMPANY

901 N. Church St., Thomasboro, IL 61878
(217) 643-3125; Fax: (217) 643-7973
Merlin Enright
Web: www.altamontco.com

BAMBOO ECOLOGIC CORPORATION

5206 Paylor Lane, Sarasota, FL 34240
(217) 622-9791
Craig Rosenlund
Web: www.becbamboo.com

SPARTEK INDUSTRIES

2221 N Argyle St., Portland, OR 97217
(503) 283-4749; Fax: (503) 289-1621
Web: www.spartek.com

NORTH CAROLINA STATE UNIVERSITY

411 Dan Allen Drive
Raleigh, NC 27695
(919) 515-2881
Lyndsey Campbell
Web: <https://research.cnr.ncsu.edu/wptechservices/>

ARMSTRONG WORLD INDUSTRIES

2500 Columbia Avenue, Lancaster, PA 17603
(717) 397-0611
Web: www.armstrong.com

KIMBALL INTERNATIONAL, INC.

Manufacturer of Fine Office and Hospitality Furniture
1155 W. 12th Avenue, Jasper, IN 47549
(800) 482-1616; Fax: (812) 482-8804
Web: www.kimball.com

A
S
S
O
C
I
A
T
E

ADHESIVE MANUFACTURERS

NAME AND LOCATION OF COMPANY		FORM	APPLICATION																										
FRANKLIN ADHESIVES AND POLYMERS 2020 Bruck Street Columbus, OH 43207 (800) 487-4583; Fax: (614) 445-1366 Jaye Schroeder, V.P. of Industrial Business E-mail: jayeschroeder@franklininternational.com Web: www.franklinadhesivesandpolymers.com			EMULSION	LIQUID	POWDER	SOLID	ASSEMBLY GLUING	BOATS (MARINE USES)	EDGE GLUING	EXTERIOR PLYWOOD	FILMS & PAPER OVERLAYS	FINGER JOINTING	FLUSH DOORS	HARDBOARD	HARDBOARD BINDER	INTERIOR PLYWOOD	LAMINATED TIMBERS	LAMINATED VENEER LUMBER	MOLDED PRODUCTS	OSB BINDER	PANEL TO FRAME	PAPER TO WOOD	PARTICLEBOARD	PARTICLEBOARD BINDER	PLASTIC LAMINATING	SCARF JOINTING	TAPELESS SPLICING	VENEER SPLICING	WAFERBOARD BINDER
BRAND NAME	TYPE																												
Multibond	X PVA		X				X	X			X	X			X														
Reactite	E P I	X				X		X				X			X														

ROO GLUE, INC 869 Old Richburg Rd Chester, SC 29706 (336) 688-0930 Web: www.rooglu.com			EMULSION	LIQUID	POWDER	SOLID	ASSEMBLY GLUING	BOATS (MARINE USES)	EDGE GLUING	EXTERIOR PLYWOOD	FILMS & PAPER OVERLAYS	FINGER JOINTING	FLUSH DOORS	HARDBOARD	HARDBOARD BINDER	INTERIOR PLYWOOD	LAMINATED TIMBERS	LAMINATED VENEER LUMBER	MOLDED PRODUCTS	OSB BINDER	PANEL TO FRAME	PAPER TO WOOD	PARTICLEBOARD	PARTICLEBOARD BINDER	PLASTIC LAMINATING	SCARF JOINTING	TAPELESS SPLICING	VENEER SPLICING	WAFERBOARD BINDER
BRAND NAME	TYPE																												
Roo 2820	X-PVAc	X	X				X	X	X		X																		
Roo 6575	X-PVAc	X	X				X	X	X		X																	X	
Roo 6565	X-PVAc	X	X			X		X		X	X	X	X		X						X	X	X					X	

SPECIALTY ORGANICS, INC. 16276 Koala Road Adelanto, CA 92301-3915 (760) 246-9000 Joseph Seruto & James Seruto E-mail: joseph@soichem.com james@soichem.com Web: www.soichem.com			EMULSION	LIQUID	POWDER	SOLID	ASSEMBLY GLUING	BOATS (MARINE USES)	EDGE GLUING	EXTERIOR PLYWOOD	FILMS & PAPER OVERLAYS	FINGER JOINTING	FLUSH DOORS	HARDBOARD	HARDBOARD BINDER	INTERIOR PLYWOOD	LAMINATED TIMBERS	LAMINATED VENEER LUMBER	MOLDED PRODUCTS	OSB BINDER	PANEL TO FRAME	PAPER TO WOOD	PARTICLEBOARD	PARTICLEBOARD BINDER	PLASTIC LAMINATING	SCARF JOINTING	TAPELESS SPLICING	VENEER SPLICING	WAFERBOARD BINDER
BRAND NAME	TYPE																												
BreezeBond™	Soy Adhesive		X											X	X								X						

Enabling Engineered Wood Products

Innovative Solutions for the Engineered Wood Products Industry.

Hexion is a world leader in supplying resins, adhesives, wax emulsions, and ancillary products to the engineered wood and hardwood veneer products industries. We meet the most challenging applications with a complete package of innovative, cost-effective solutions. We're also at the forefront in developing environmentally suitable technologies for reduced emissions.

Product Lines

- Urea Resins
- Melamine Resins
- Phenolic Resins
- Phenol-Resorcinol Resins
- PVA Adhesives –Conventional and Cross Link
- Casein Adhesive
- EcoBind™ Ultra-low Emitting Resin and Adhesive Technologies
- EPI Adhesive
- HRA Technology (Heat Rated Adhesives)

Applications

- Veneer Splicing
- Composite
- Panels
- Hardwood Plywood
- Furniture
- Laminating
- Saturating
- All Woodworking Applications
- Fingerjointing – Structure and Non-structural Adhesives

Sales Offices

- Alexandria, LA +1 318 445 6115
- High Point, NC +1 336 884 8918
- Portland, OR +1 503 286 3653
- Springfield, OR +1 866 443 9466

Visit us at [Hexion.com](https://www.hexion.com)

ADHESIVE MANUFACTURERS

NAME AND LOCATION OF COMPANY		FORM				APPLICATION																						
<p>HEXION INC. (866) 443-9466 Order Desk Web: www.hexion.com</p> <p>610 S. 2nd Street, Springfield, OR 97477 (541) 941-8596; Fax: (541) 747-3868 Alex Brown, Regional Account Manager, West Performance Adhesives E-mail: alex.brown@hexion.com</p> <p>1717 Ward Avenue, High Point, NC 27261 (336) 884-8918 ext. 5117; Fax: (336) 884-1023 Scott Steller, Regional Account Manager, East Performance Adhesives E-mail: scott.steller@hexion.com</p> <p>3901 Sugarhouse Road, Alexandria, LA 71301 (318) 445-6115 ext. 17; Cell: (318) 471-7791 David Dark, Business Dir., North America Plywood/LVL E-mail: david.dark@hexion.com</p>		EMULSION	LIQUID	POWDER	SOLID	ASSEMBLY GLUING	BOATS (MARINE USES)	EDGE GLUING	EXTERIOR PLYWOOD	FILMS & PAPER OVERLAYS	FINGER JOINTING	FLUSH DOORS	HARDBOARD	HARDBOARD BINDER	INTERIOR PLYWOOD	LAMINATED TIMBERS	LAMINATED VENEER LUMBER	MOLDED PRODUCTS	OSB BINDER	PANEL TO FRAME	PAPER TO WOOD	PARTICLEBOARD	PARTICLEBOARD BINDER	PLASTIC LAMINATING	SCARF JOINTING	TAPELESS SPLICING	VENEER SPLICING	WAFFERBOARD BINDER
Casco	Casein		X								X	X		X									X					
Cascamite Splicer Adhesives	Urea Powder		X																							X		
Cascamite General Purpose Adhesives	Urea Powder		X		X	X					X	X		X					X		X		X	X				
Casco Resin	Modified Urea Resins	X			X	X					X	X		X								X	X					
Casco Resin	Urea Resins – Plywood	X			X	X		X	X	X	X	X		X					X	X	X		X	X				
Casco Resin	Urea Resins – Particleboard	X																				X						
Cascophen	Phenolic – Hardboard	X											X															
Cascophen	Resorcinol, Phenol-Resorcinol	X			X	X	X	X				X			X							X	X	X				
Cascophen	Phenolic	X					X											X									X	
Cascorez	Polyvinyl Acetate	X			X	X		X	X	X	X	X		X					X	X	X		X	X	X	X	X	
Cascomel	Melamine	X					X	X	X																			
Cascomel	Melamine		X		X	X	X	X	X	X	X	X									X	X		X	X			
Cascomel	Melamine Urea		X		X	X	X	X	X	X	X	X									X	X		X	X			
Cascowax	Wax Emulsion	X										X						X				X					X	
Paper Overlay Resins	Urea – Paper Overlay	X							X			X									X	X						
Wonderbond	Cross Link PVA	X			X	X	X		X	X	X	X		X					X		X		X	X				
Wonderbond	Precatalyzed Cross Link PVA	X			X	X	X		X	X	X	X		X					X		X		X	X				
XB-9000 Series	Thermoset Emulsions	X	X				X	X		X																		

ADHESIVE

ADHESIVE MANUFACTURERS

NAME AND LOCATION OF COMPANY		FORM	APPLICATION																										
<b style="color: red;">VINAVIL AMERICAS 1144 East Newport Center Drive Deerfield Beach, FL 33442 (954) 415-2454; Fax: (954) 246-8800 E-mail: hjshah@vinavil.com Web: www.vinavil.com/US			EMULSION	LIQUID	POWDER	SOLID	ASSEMBLY GLUING	BOATS (MARINE USES)	EDGE GLUING	EXTERIOR PLYWOOD	FILMS & PAPER OVERLAYS	FINGER JOINTING	FLUSH DOORS	HARDBOARD	HARDBOARD BINDER	INTERIOR PLYWOOD	LAMINATED TIMBERS	LAMINATED VENEER LUMBER	MOLDED PRODUCTS	OSB BINDER	PANEL TO FRAME	PAPER TO WOOD	PARTICLEBOARD	PARTICLEBOARD BINDER	PLASTIC LAMINATING	SCARF JOINTING	TAPELESS SPLICING	VENEER SPLICING	WAFFERBOARD BINDER
BRAND NAME	TYPE		X				X		X			X	X		X	X	X			X									
Vinavil	X PVA		X				X		X			X	X		X	X	X			X									



EXCELLENT SERVICE

Danzer covers all your needs for decorative veneers, hardwood lumber, flooring lamellas, specialty veneers, and spliced faces. Our technical innovations ensure the best use of the natural resource, and allow us to give you what you need, when you need it. Couple this with our long-term focus and dedication to protecting the environment, and you experience why Danzer is an excellent choice.

danzer.com



DANZER
Hardwood Excellence.



MURPHY

AMERICAN MADE HARDWOOD PLYWOOD

FAMILY OWNED AND OPERATED SINCE 1909

